

February 2nd. The bed which begins immediately below Keng-lajka terminates at Atschi-schipang (fig. 334); it is however an old boldschemal rather than a river. From the point where it reunites with the Tschertschen-darja two small ariks go off to the Jangi-terem, or »new settlements», at Atschi-schipang, where not long ago an attempt was made to grow wheat. The canals are crossed by small bridges at the point where they are intersected by the road between Tschertschen and Tscharklik. After that we left on our right the river and the little pool of Schor-köl, which, although fed by fresh springs, nevertheless contains salt water, and inclining to the north-north-east, entered an almost inextricable labyrinth of tamarisk-mounds, reeds, and dead forest, before we reached Tschong-schipang, the farther of the two old river-beds. This we found to be very distinct, forming an almost straight trench in the ground, with a breadth practically equal to that of the existing Tschertschen-darja. Its scarped terraces, about a couple of meters high, are crowned by a quantity of tamarisk-mounds, which help to give great definiteness of outline to the river-bed. At intervals there are poplars,

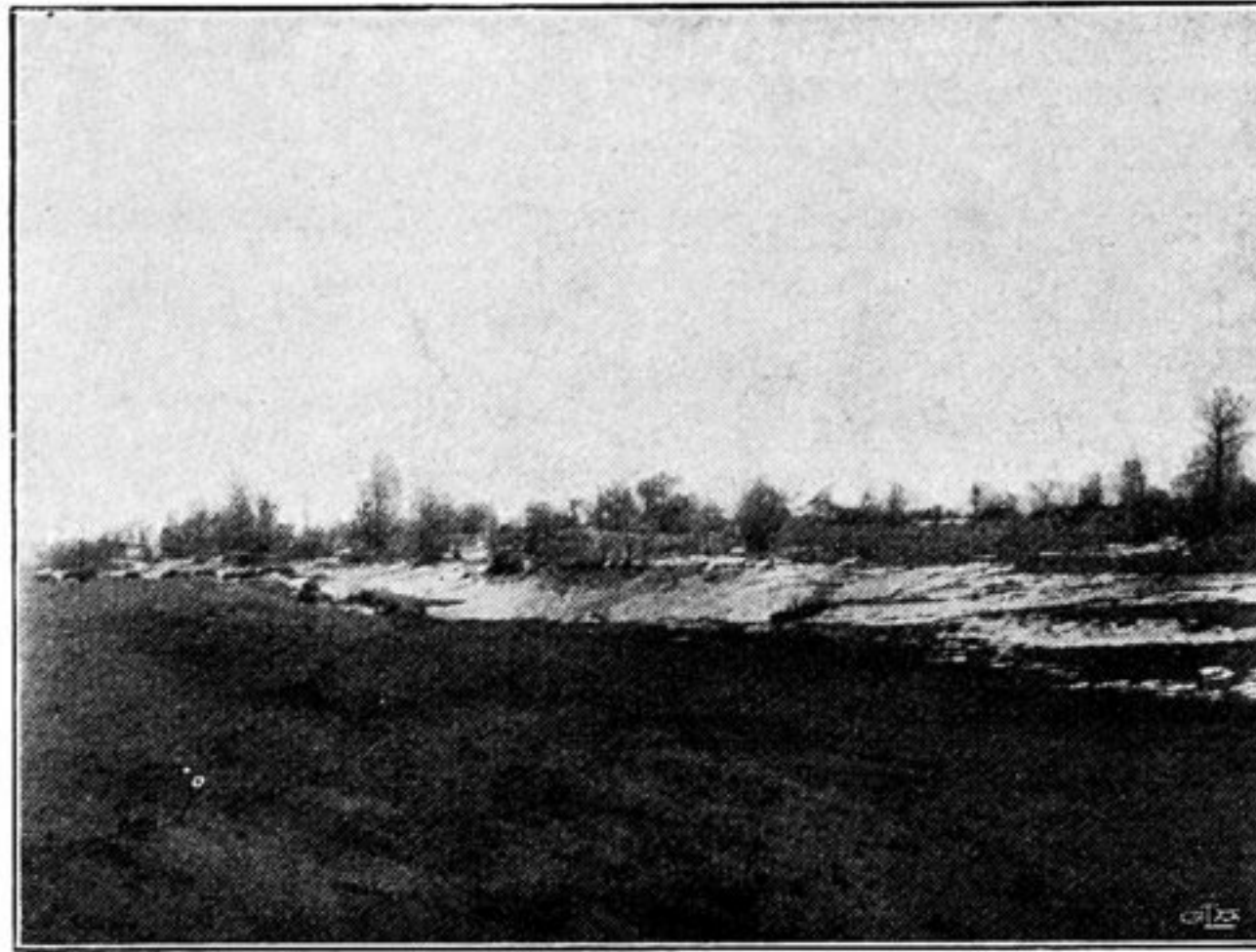


Fig. 334. PART OF THE OLD RIVER-BED AT ATSCHI-SCHIPANG.

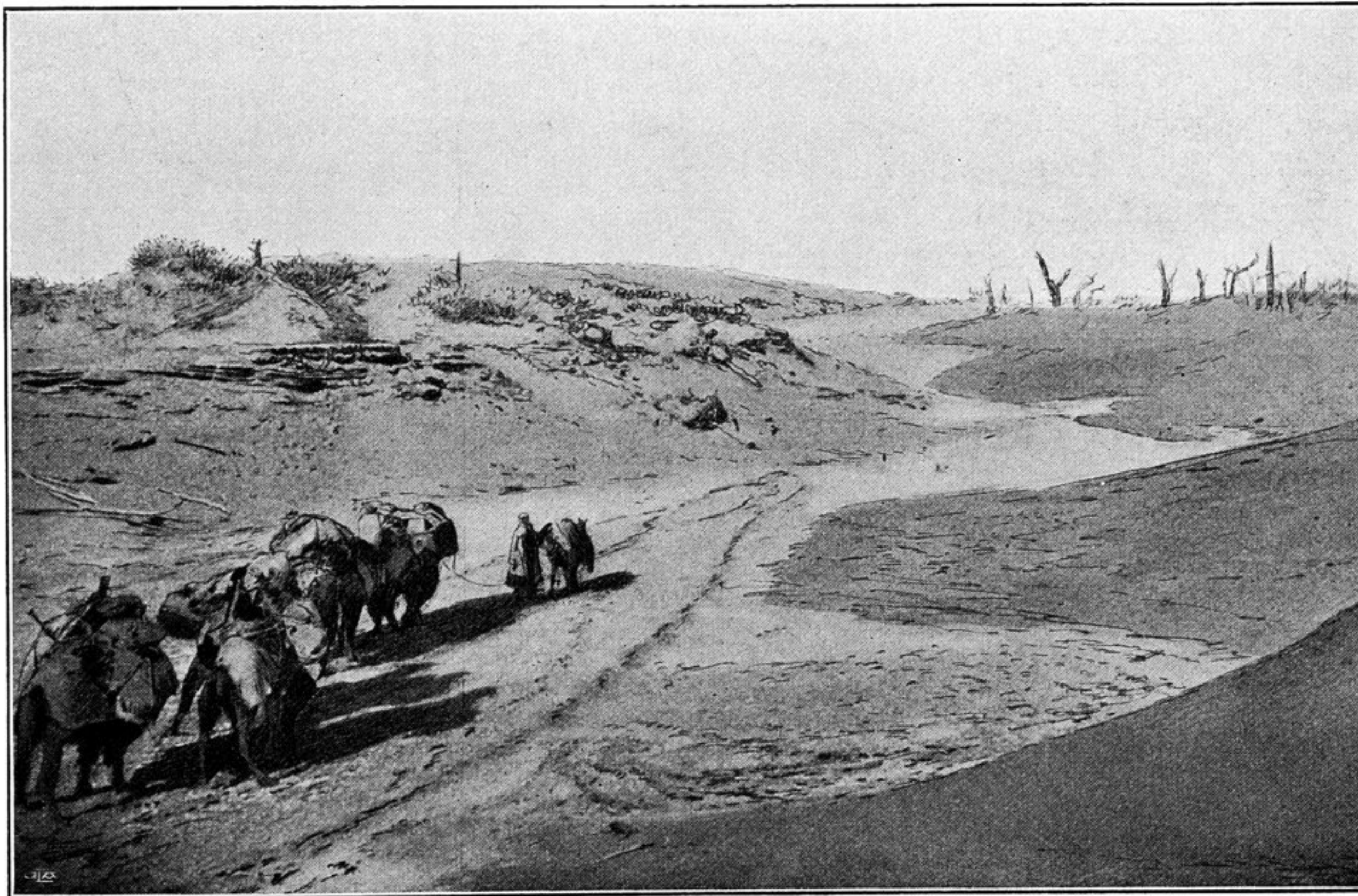


Fig. 335. AN OLD BED OF THE TSCHERTSCHEN-DARJA SITUATED TO THE NORTH OF THE PRESENT RIVER. VIEW LOOKING NE.