

raging, bringing with it its usual accompaniment, the dust-haze, so that our view was circumscribed. But the high banks and abundant vegetation screened us from the worst of the tempest.

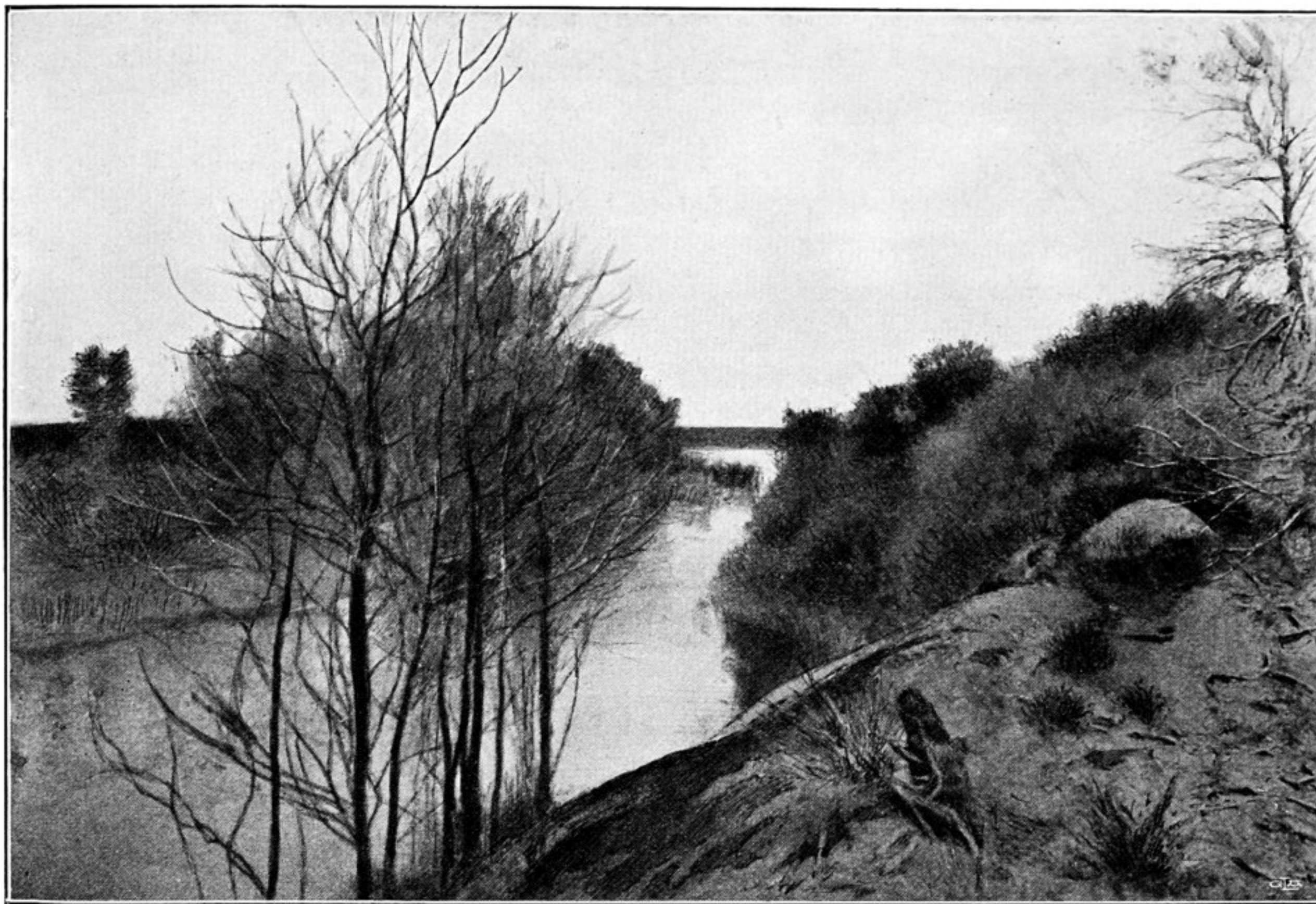


Fig. 413. VIEW OF THE ILEK, LOOKING UP-STREAM FROM KUM-TSCHEKE.

Above the Karaune-tokkan-köl is the Basch-köl, a sort of division of the former, both lakes being fed by the same two canals. All these small lakes lie quite close to the right bank of the river, only one or two hundred meters distant, and have no connection with the Tarim. The next lake is the Barat Kulning-köli, the biggest of them all; it lies a little farther away. The river (Ilek) still continues to present the same appearance, being narrow and disproportionately deep, with a sluggish current, and perfectly limpid water, which glances a blackish green when viewed against the predominant yellow and green tints of the landscape; in fact, it looks like a river of ink. Kamisch grows on the edge of the bank, for it is only where the sand actually touches the loops that the banks are

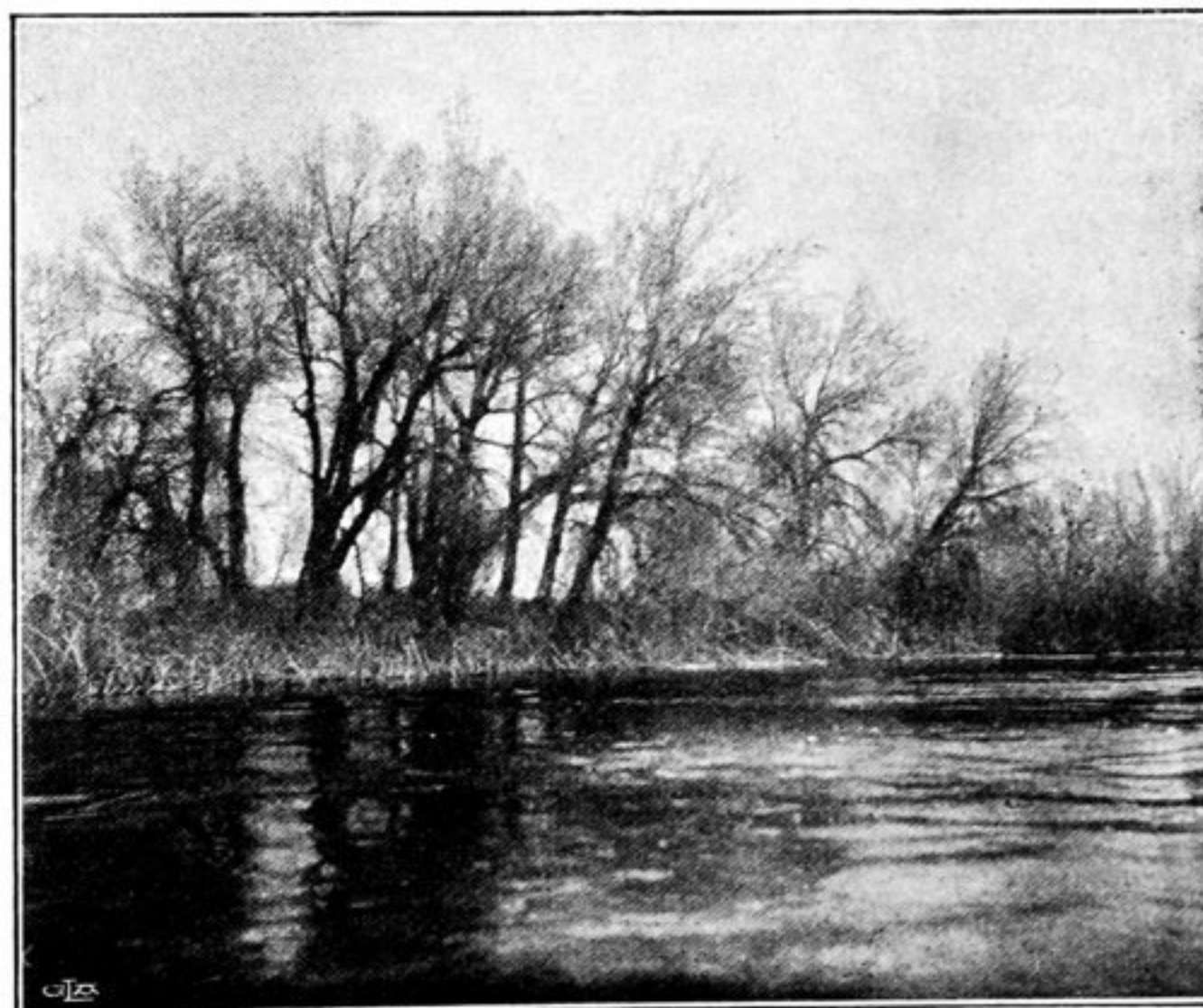


Fig. 414. TOGHRAK-TSCHEKE.