



Fig. 20. SCENERY IN THE VALLEY S.E. OF KURBANTSCHIK.

crossed it by the Turfan route *viâ* Singer, Grum-Grschimajlo crossed it between Luktschin and Olun-temen-tu, and I crossed it farther to the east. This has made indeed a great part of the system known; but the western parts depicted on our maps are certainly incorrect, if not imaginary. Grum-Grschimajlo* shows on his

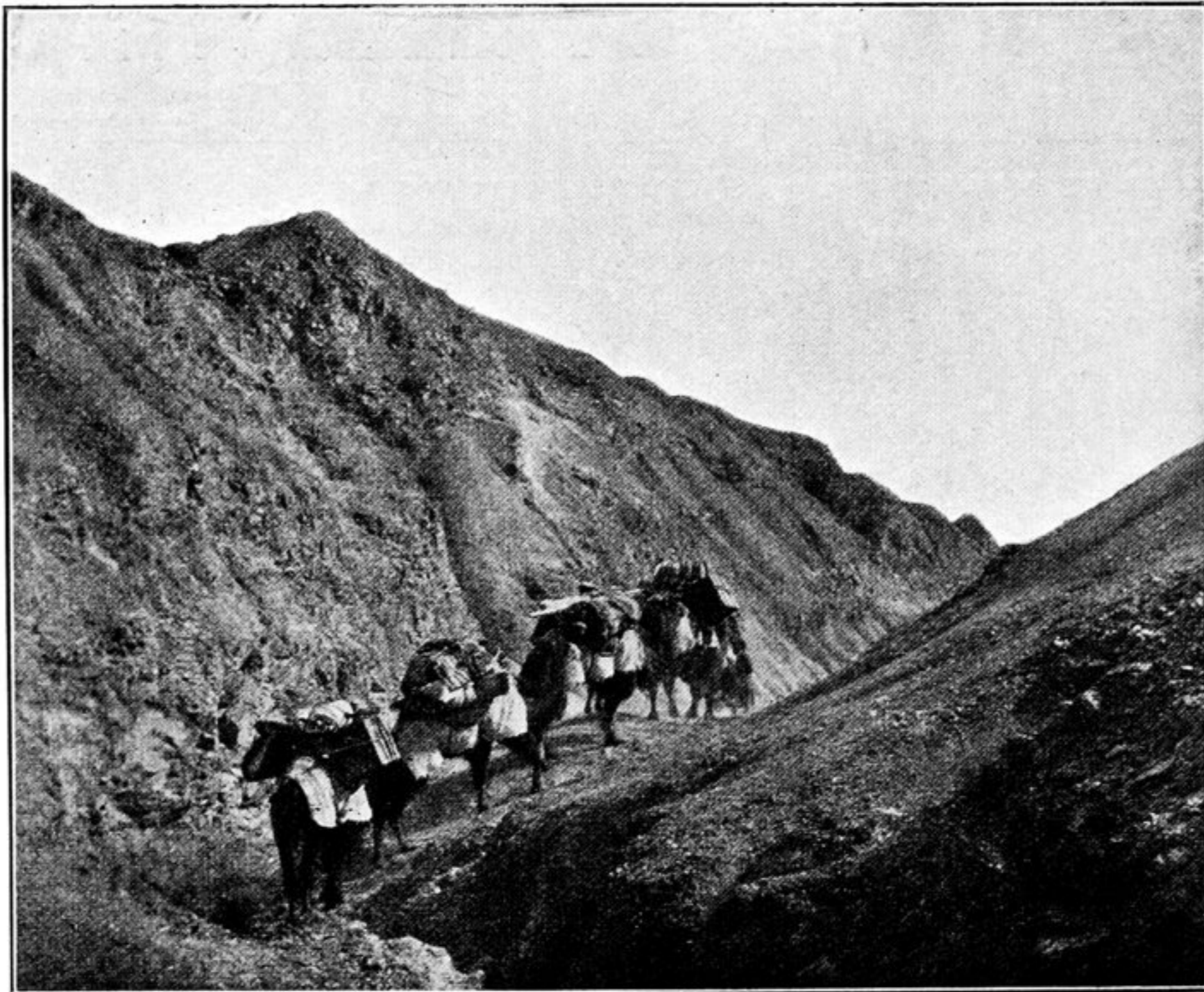


Fig. 21. SCENERY IN THE VALLEY S.E. OF KURBANTSCHIK.

* See his *Opisanije puteschestvija v Sapadnij Kitaj*, tome 1.

Hedin, Journey in Central Asia. II.