

Fig. 22. SCENERY IN THE VALLEY S.E. OF KURBANTSCHIK.

map of this region two nearly parallel chains, calling the northern one Chara-teken-ula and Singer, and the southern one Kuruk-tagh. Kosloff, who mapped the Baghrasch-köl during Pjevtsoff's expedition, also depicts two chains south of the lake, namely the Chara-teken-ula and its eastern continuation, the Kisil-sangir-tagh, in

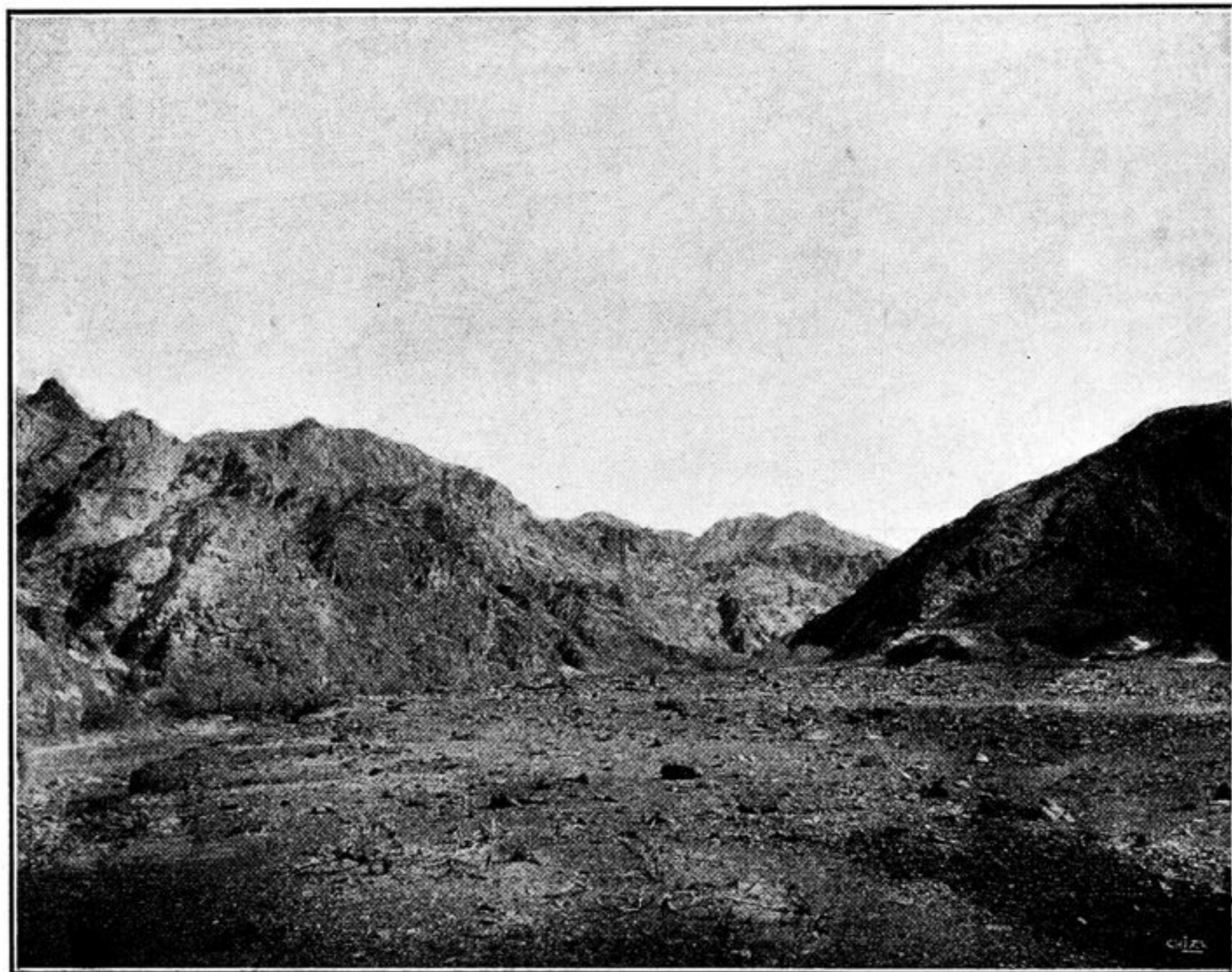


Fig. 23. SCENERY IN THE VALLEY S.E. OF KURBANTSCHIK.