

Fig. 24. BROAD PARTS OF THE VALLEY S.E. OF KURBANTSCHIK.

addition to the Kuruk-tagh. Dr. Hassenstein also inserted them both on my map in *Petermanns Mitteilungen*. But in the light of the information given to me by men well versed in the local topography, I am disposed to think that as an actual fact there exists here but one mountain-chain, and that it forms a dividing wall as

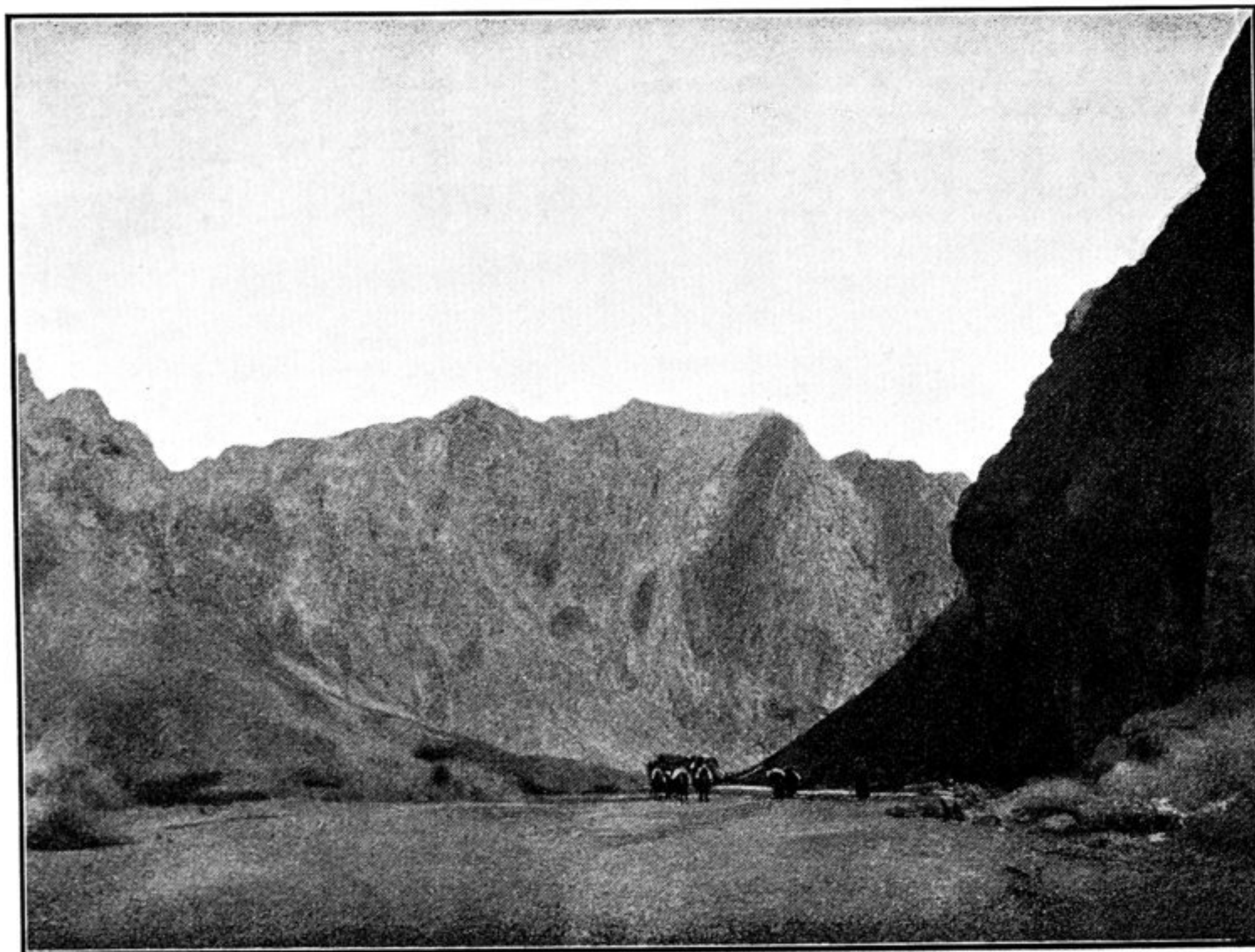


Fig. 25. BROAD PARTS OF THE VALLEY S.E. OF KURBANTSCHIK.