

towards the N. 25° W. The former, which was only exposed at a few places, was excessively weathered, and crumbled to pieces at a touch.

We followed the glen in its upward ascent. From both sides it is joined by smaller glens and ravines, and the sculpturing of the rain-torrents, which we seldom

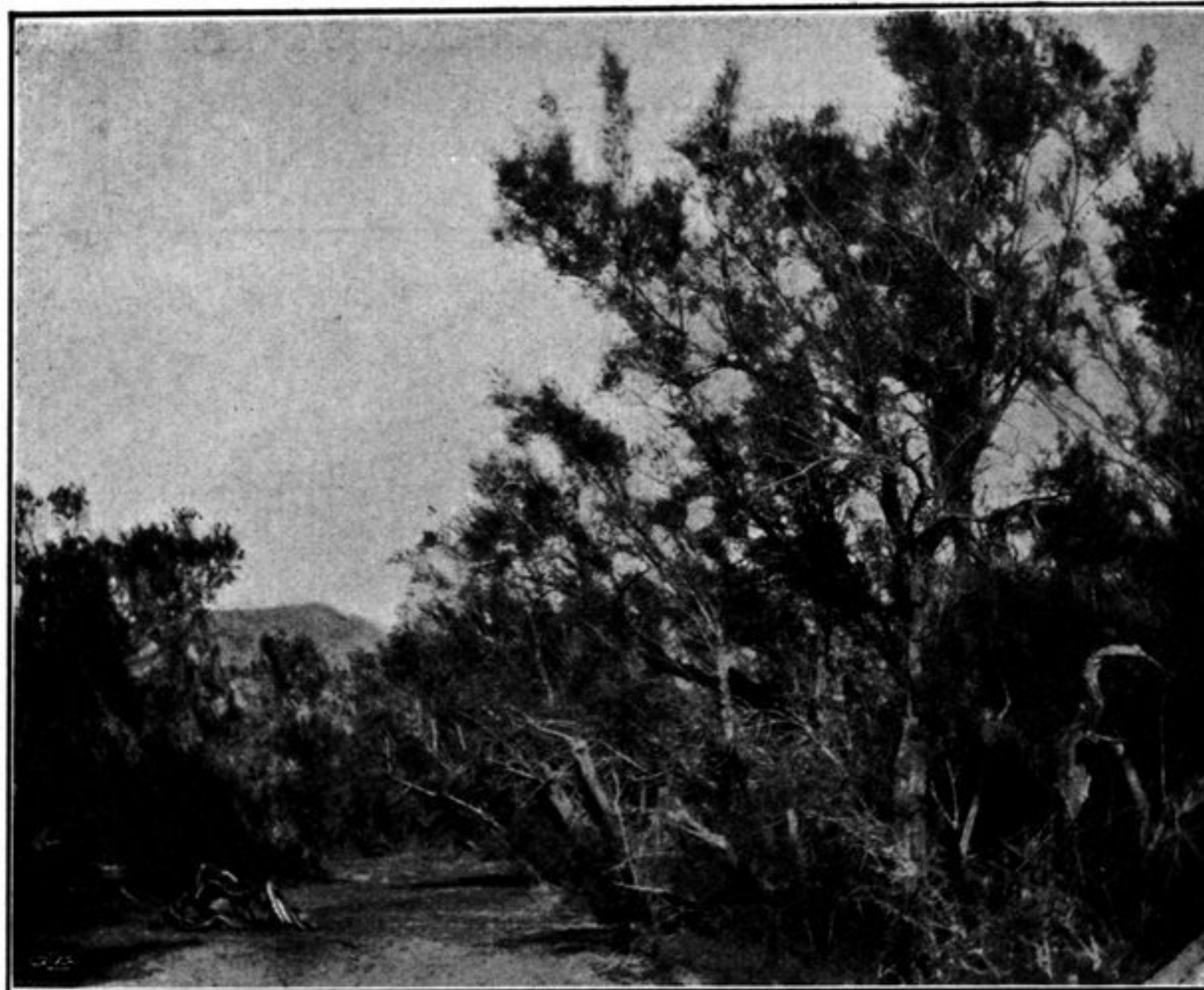


Fig. 4. BIG TAMARISKS IN THE VALLEY OF TATLIK-BULAK.

saw, and which were then absolutely dry, imparted an increasingly rugged aspect to the mountain scenery. The track ran up and down over the hills, ridges, and side-spurs of every shape and size, all built up of the same soft material and furrowed by thousands upon thousands of dry torrents. Here too the dark green schist predominates, though it only crops out at the points where the sides of the watercourses