

vanced; it is only at the narrower places that it is poor or lacking altogether. It consists for the most part of magnificent tamarisks, which were then in full bloom, and of green and sappy kamisch. Immediately above Tatlik-bulak there is a small group of toghraks; between two of them were some poles set up so as to make a

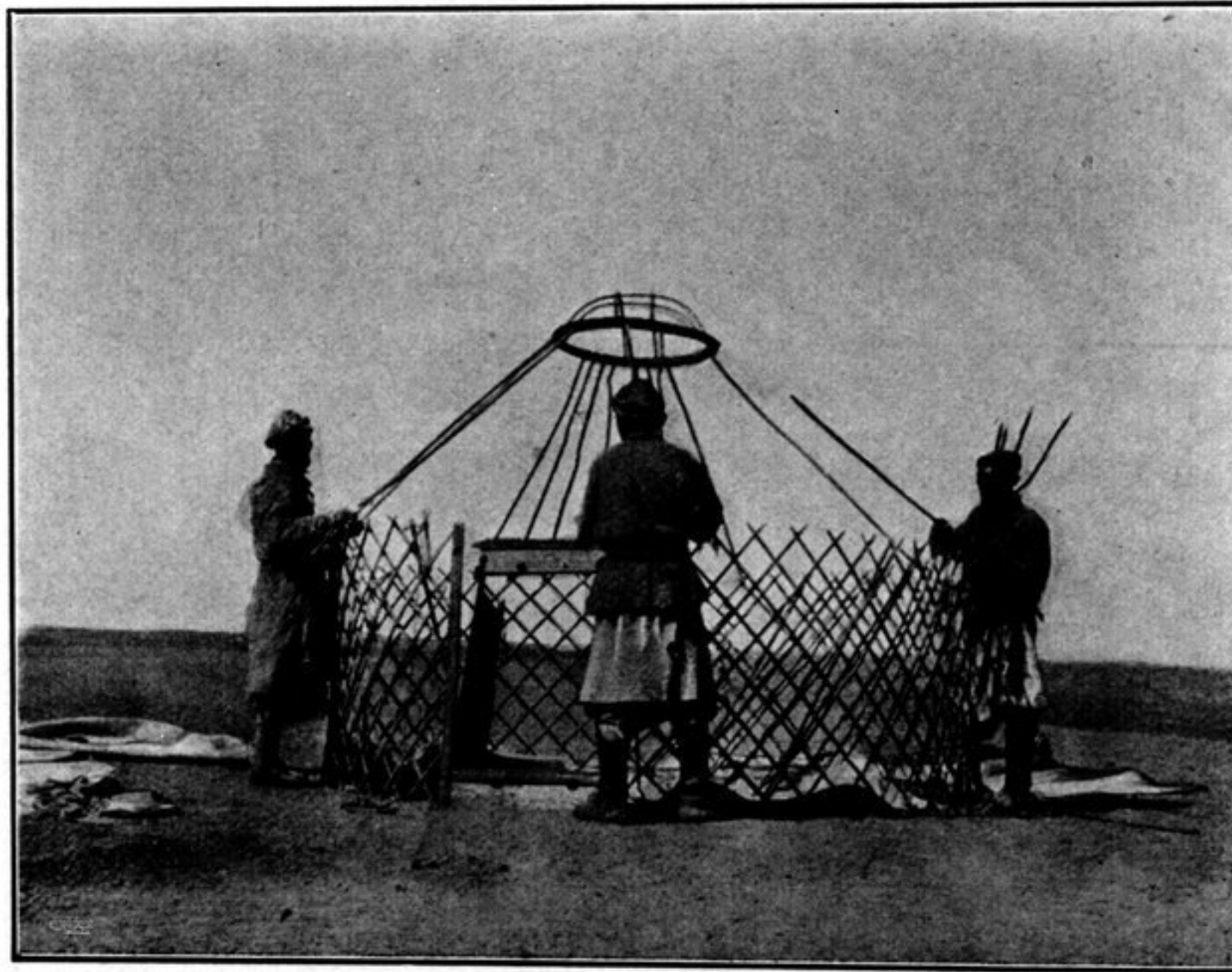
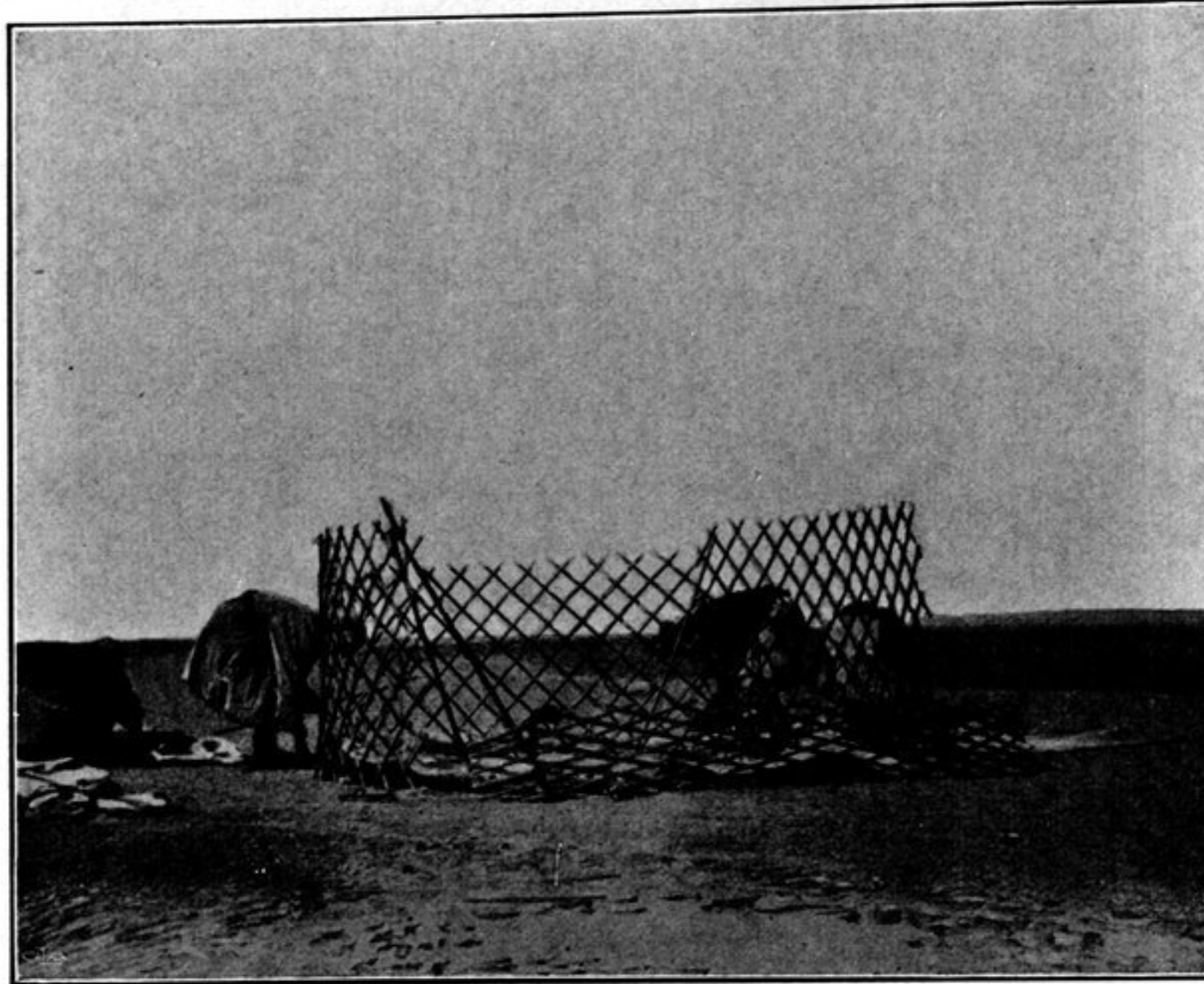


Fig. 11. CONSTRUCTION OF MY MONGOL TENT.

raised platform (*saldam*), said to have been erected by the wild-camel hunters upon which to protect their booty against their dogs and against wild animals. But wild-camel never show themselves in this glen now. As a rule hard rock predominates on the right side of the glen and softer formations on the left. The transition from the steep mountain-sides to the level, water-worn bottom of the glen is often effected