

by means of gravel-and-shingle terraces having the hardness of conglomerate, and in their base the brook has in many places hollowed out small grottoes and arches in miniature. Along the foot of the solid rocks, and at varying heights above the bottom of the glen, generally 35 to 40 cm., there frequently occur dark lines, which

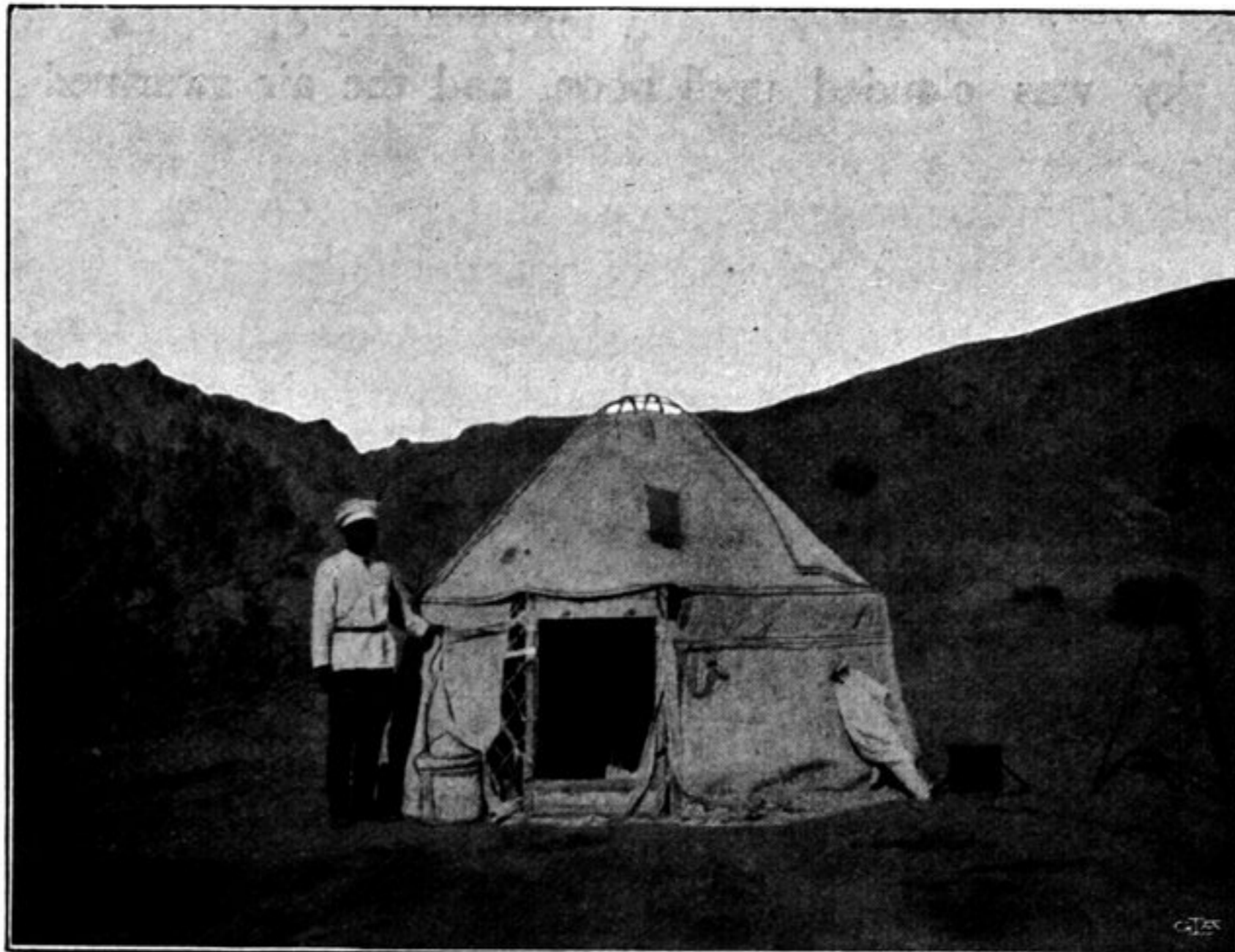
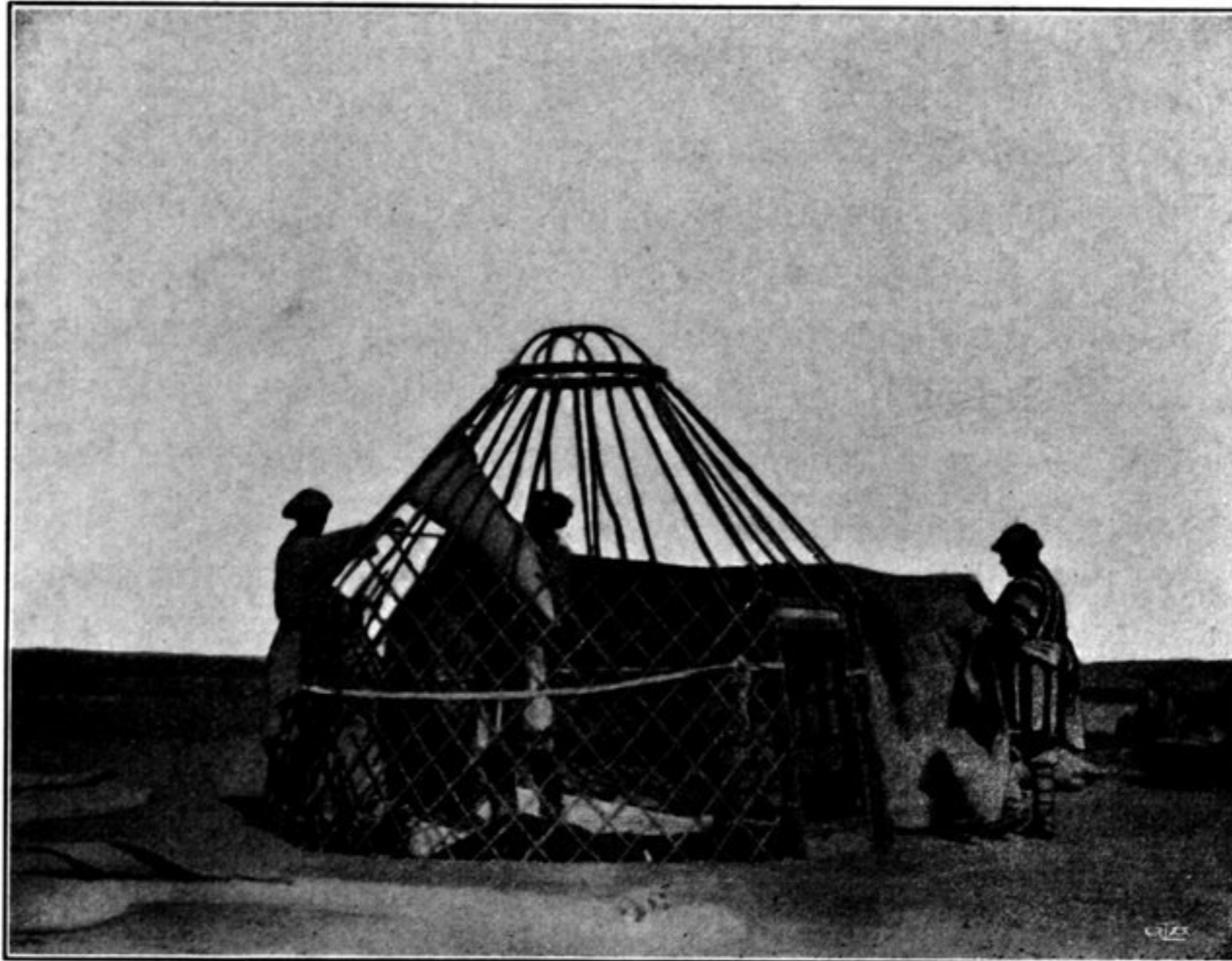


Fig. 12. CONSTRUCTION OF MY MONGOL TENT.

one is tempted to ascribe to the floods. But the accounts given me of the winter ice that forms in the glen make it more likely that these lines are caused either by the movement of the ice in spring or by its power of arresting disintegration through the exclusion of the atmosphere.