

Fig. 20. THE UPPER ASTIN-TAGH.

fore lies a good deal outside the main axis of the system, for the principal mass of the Astin-tagh (i. e. the Tschokuluk-tagh) lies to the north of it, and only a small portion to the south. In this way we gradually climbed up to the highlands of the Tibetan plateau. Later on I propose to deal with the altitudes in connected sequence.

The little glen which we had been following issues into a broad latitudinal valley, stretching from east to west between the Astin-tagh and the Akato-tagh, the next parallel range on the south. This valley possesses no special name, but is called

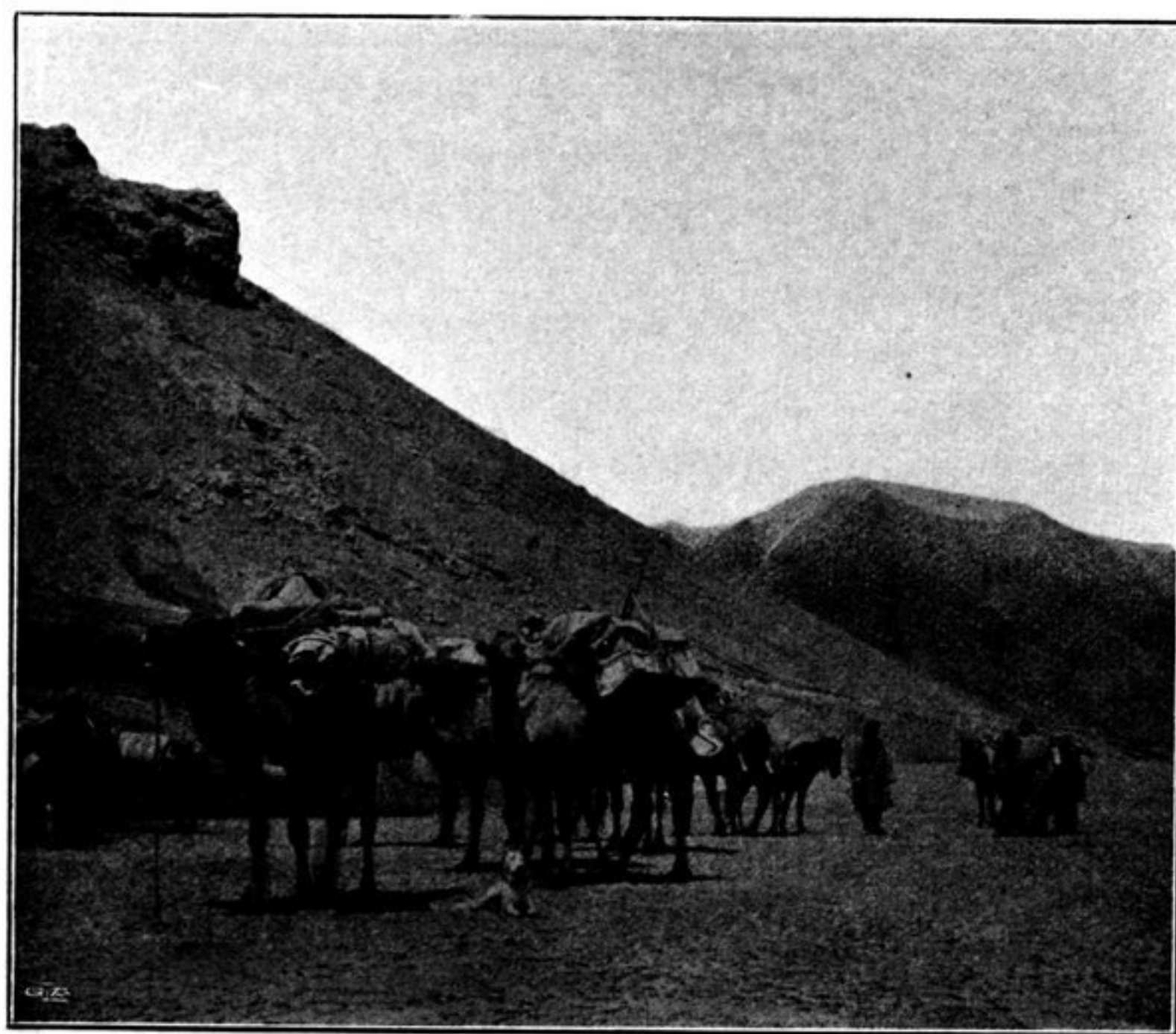


Fig. 21. THE UPPER ASTIN-TAGH.