

Fig. 22. THE SAME.

simply Kakir, a word which means »a hard, sterile, dry clay bottom». From the southern foot of the Astin-tagh the slope is very gentle, 1° to $1\frac{1}{2}^{\circ}$, though perceptible to the eye. The surface consists of fine, powdery material, little gravel, and is seamed by dry watercourses running S. 25° E. down to the main stream, which keeps to the south side of the valley. At the point where we crossed it the main stream was flowing towards the east-north-east. It is also joined by dry ravines from the Akato-tagh, but they are both smaller and fewer in number. Immediately north of this watercourse the track we were following is connected with another track leading from Usun-schor in the west. In the south-west the dominating feature was

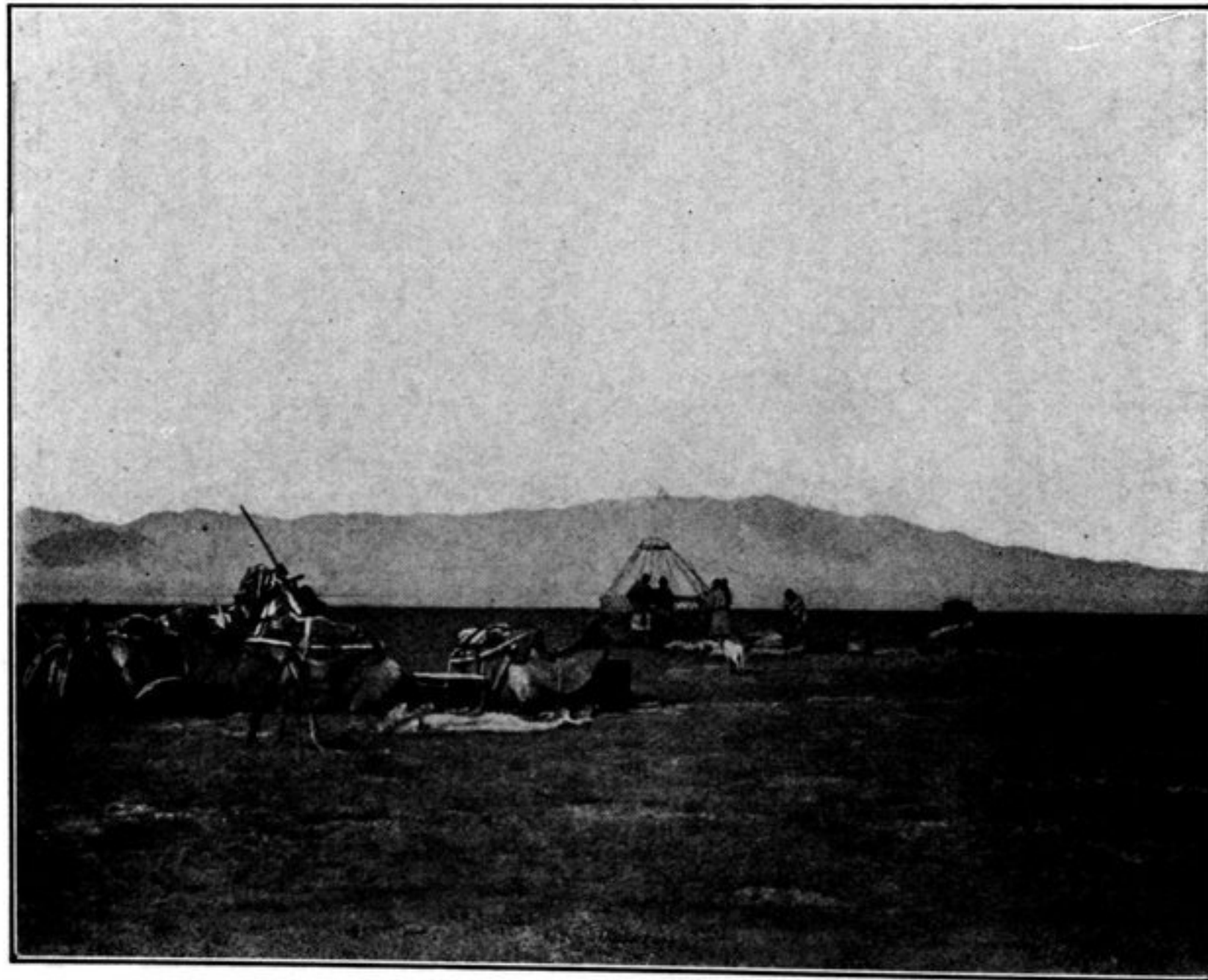


Fig. 23. CAMP V.