

the stream picking up the burden of sand here, and depositing it there, and the fact that these processes were repeated by jerks, or fits and starts, time after time.

The southern shore-line is not indented by any noteworthy bays, or diversified by islands, with the exception of one large crescentic mud island, just below

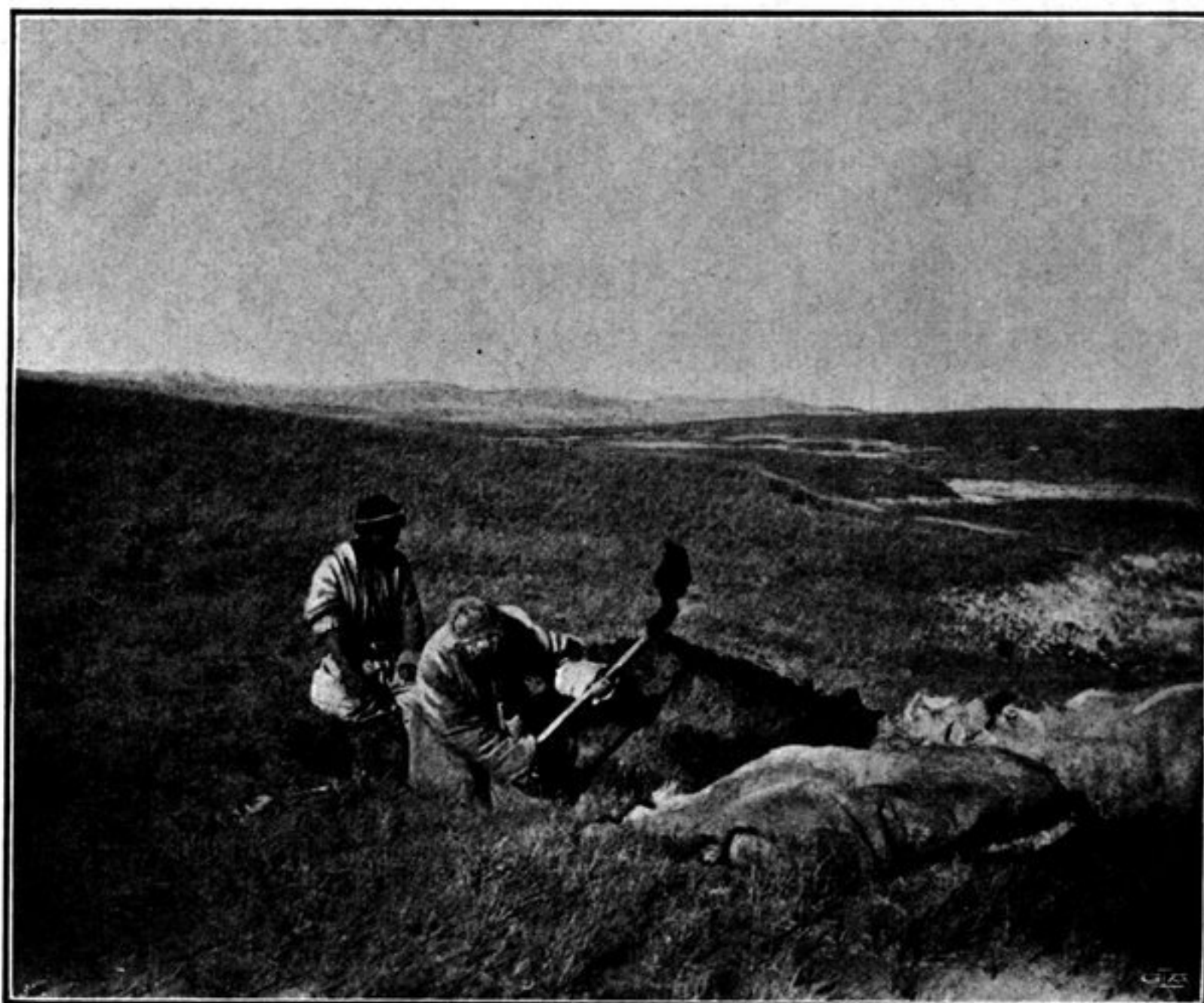


Fig. 120. SCENES FROM THE BURIAL OF ONE OF MY MEN AT CAMP LVI.

Camp LV. There is only one cape of any size, and it consists of mud, formed by the deltaic arms of a brook. East and west of it are a couple of intensely salt lagoons lying quite close to the shore; the shore itself consists of gravel and sand, and is perfectly hard and solid. The water is, as I have just said, intensely salt, yet