

Immediately after leaving Camp LX all the débris was composed of red and grey granite, conjoined with dark crystalline schist. The distinctly marked crest with the dome-shaped summits consists of bedded red granite, with a dip of 83° towards the N. 30° E. Its disintegrated matter, which not only fills the small eroded water-courses in the mountain's flanks, but also forms a scree of débris at its base, is of a very fresh and vivid blood-red colour. In the narrow transverse defile I observed a variety of grey granite in the face of the cliff. South-west of the exit from this defile are various minor hills buried under débris and slabs of brick-red sandstone. In the last of the glens running north-east the crystalline schist again cropped out with a dip of 30° towards the N. 30° W.; it was severely weathered and formed very small ridges projecting just above the ground. Farther on, near Camp LXI, the same rock had a lie of 43° to the S. 30° W. and of 72° to the S. 30° W. In the latter localities it alternated with strata of a coal-black argillaceous schist.

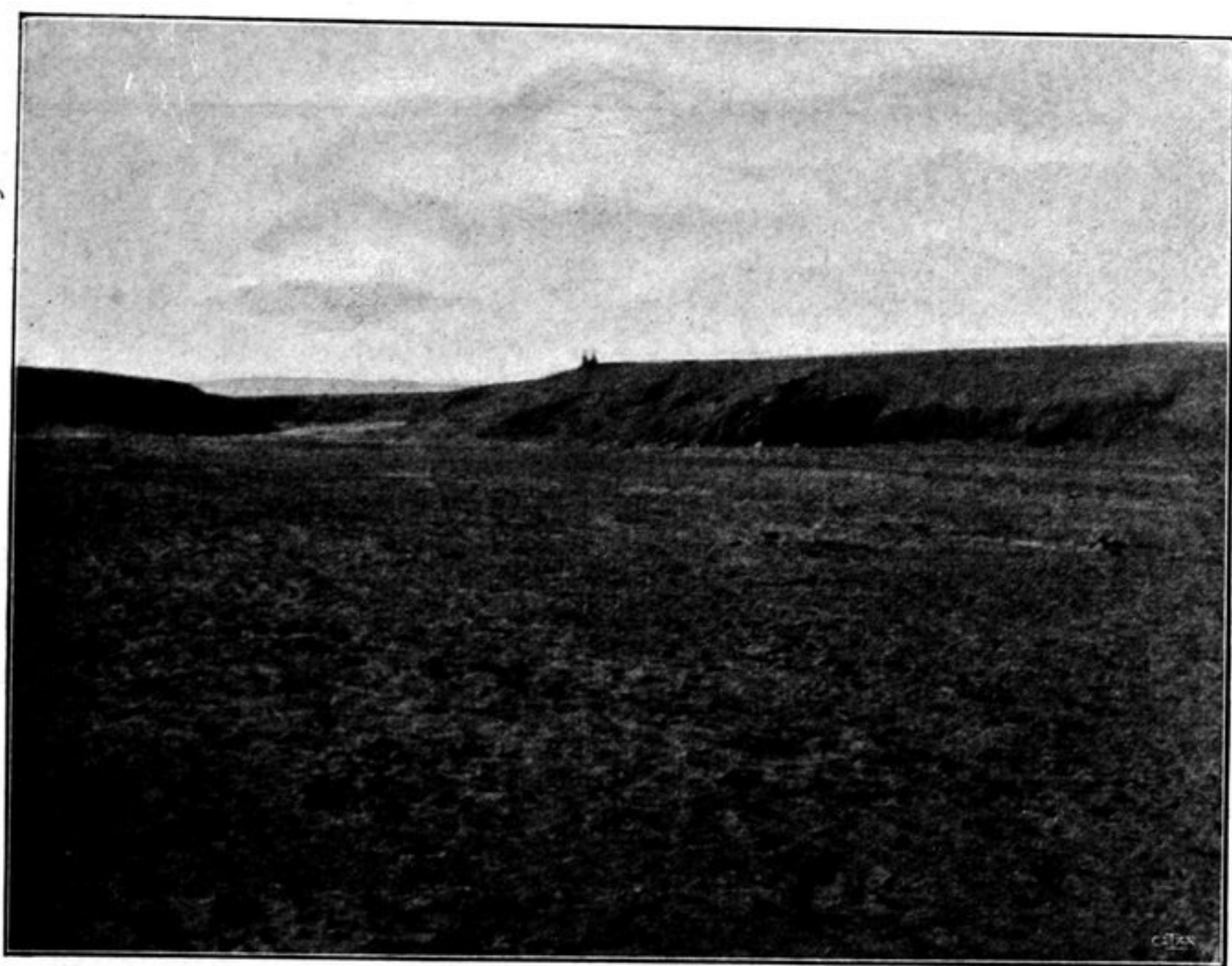


Fig. 127. THE DEFILE AT CAMP LXI.

During the greater part of the day a storm raged from the west, the wind blowing at a velocity that quickened up to 23 m. in the second, while every now and again we had a hail-squall. The storm swept the dust and drift-sand, and even small stones, before it along the slopes of the mountains, careering down the broad open valley like water in a river-bed. The clouds, which almost brushed the surface of the earth, raced eastwards at terrific speed. In the partial shelter of a flat hill on the southern shore of the lake the velocity of the wind was however only a little over 14 m. in the second. But at 8 o'clock in the evening the storm stopped just as suddenly as it began, and was followed by an hour's perfect calm. At 9 the wind began to blow again, fitfully and in squalls, from every quarter.

September 30th. The eastern shore of the lake is slightly broken; there are small soft hills bearing scanty grass with an occasional pool. East of our line of