

sible. At a considerable distance north of this river we forded four other watercourses, the biggest of which had a volume of 2 cub.m. in the second. These came from the north-west, flowing out of the range that borders the lake-basin on the north. The locality in which they appeared more especially to originate is that

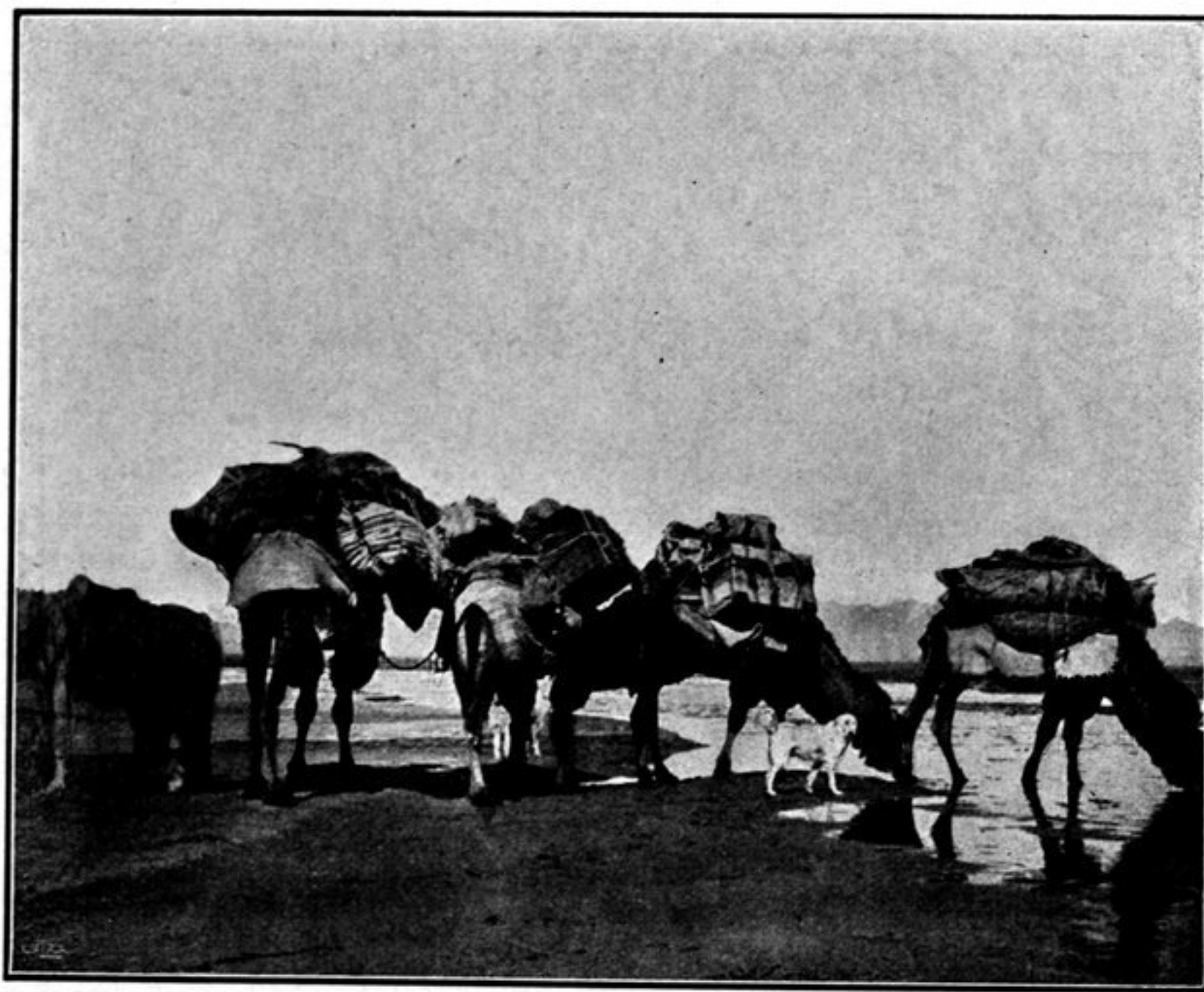
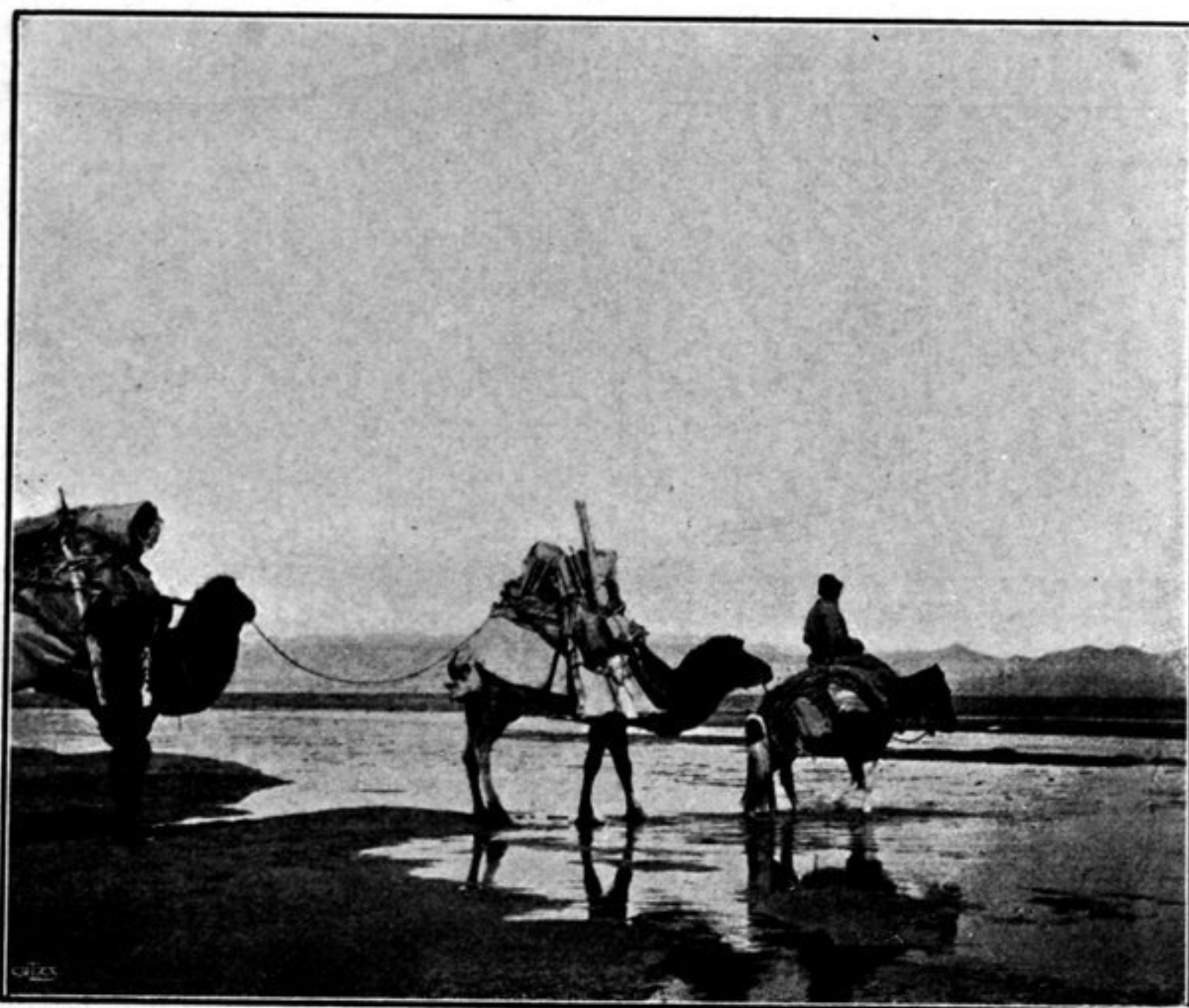


Fig. 133. SOME VIEWS OF THE RIVER OF ATSCHIK-KÖL.

around the peak A 3, though this I was not able to determine with certainty. Between the river and these four streams, which probably unite before they enter the lake, there are several other watercourses, then dry and very shallow, and the country adjacent presented clear evidences of having been under water for a broad stretch