

enjoys no opportunity of creating erosion terraces, but expends its energy instead in sedimentation and in levelling up.

We were travelling north-north-west, making for a gap in the crest immediately west of the snowy peak C₃, where there appeared to be a pass. After cross-

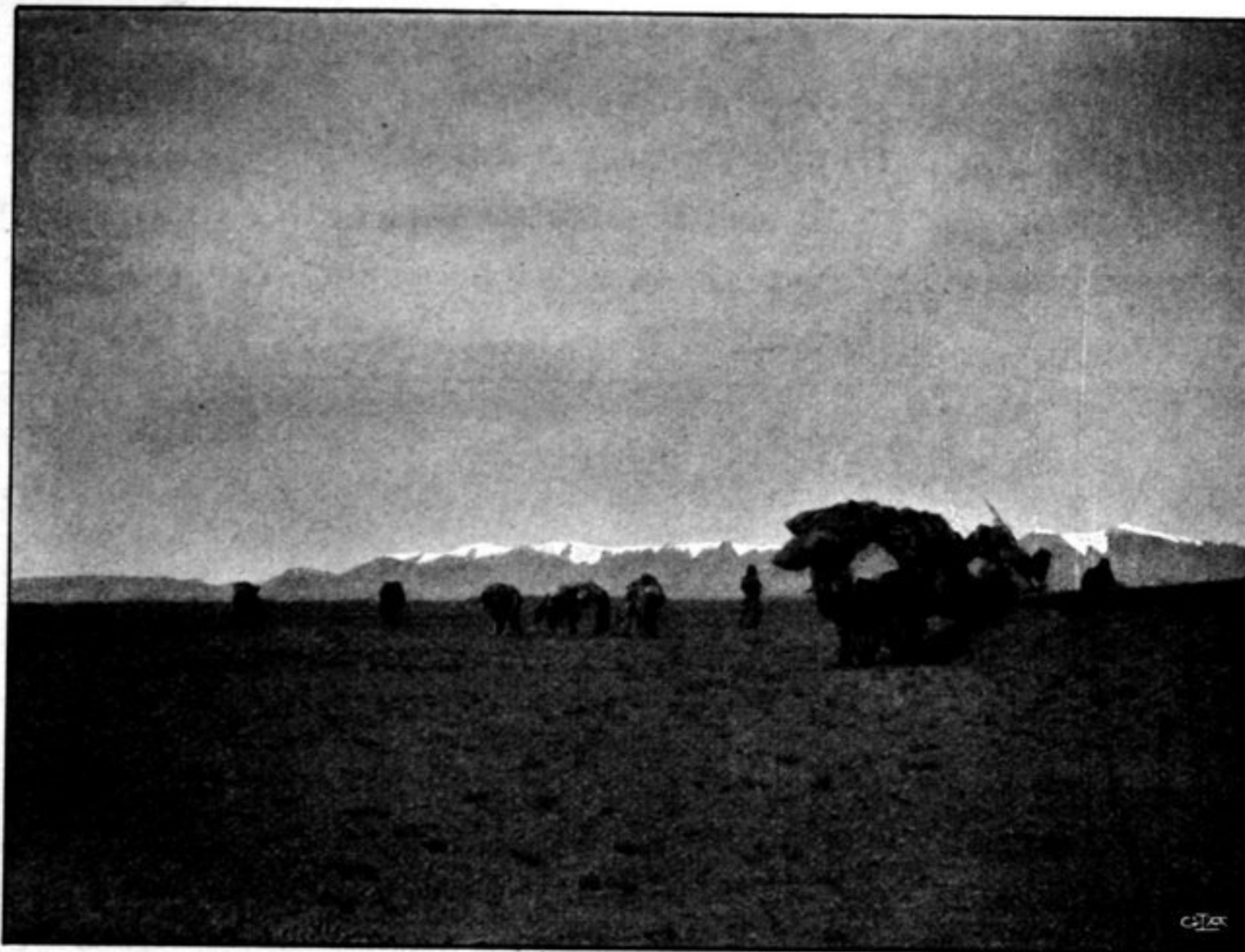


Fig. 135. ON THE ROAD TO THE NORTHERN BORDER-RANGE OF THE ATSCHIK-KÖL-BASIN.

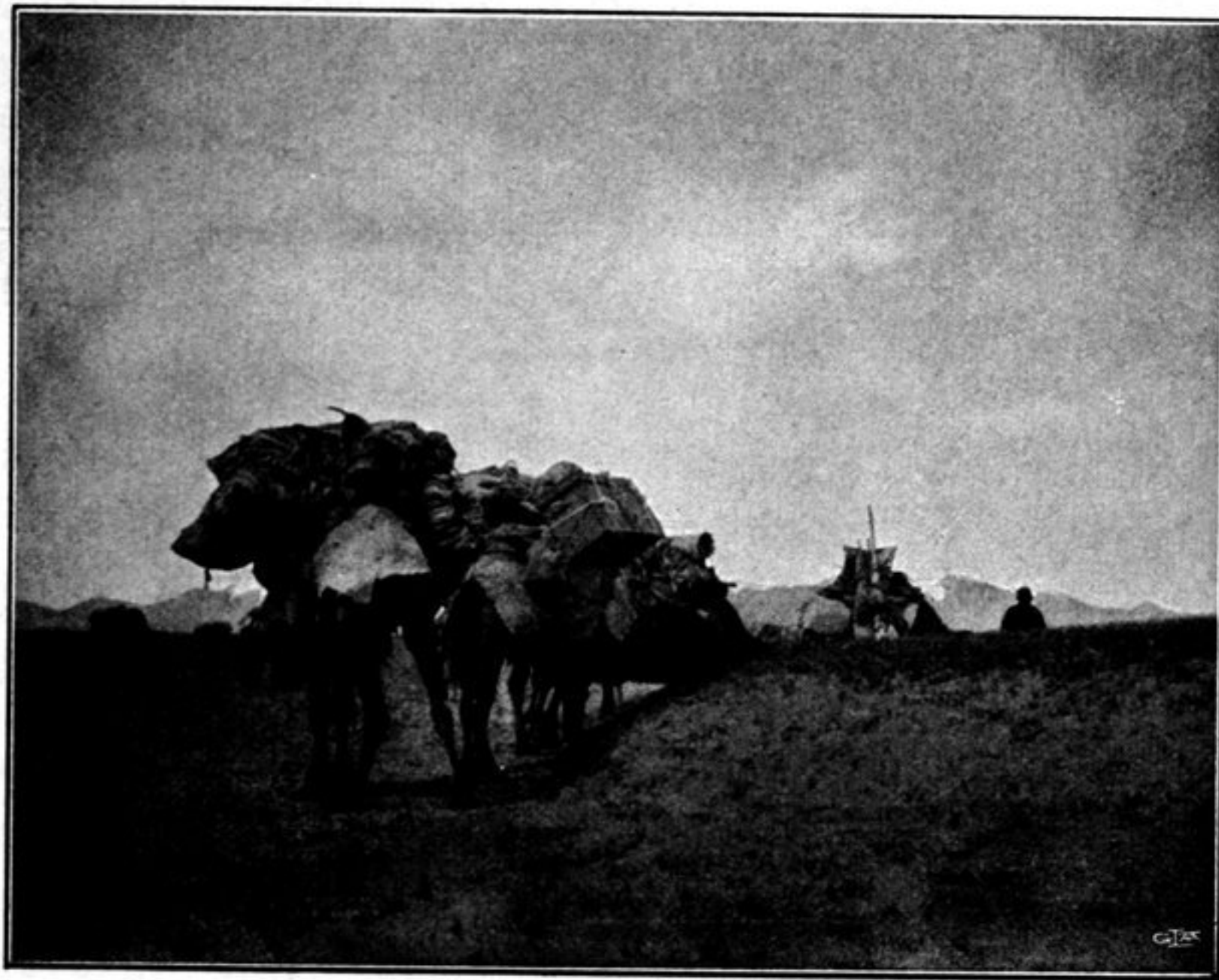


Fig. 136. GRAZING ON THE ROAD.

ing the last of the watercourses, we entered upon a gently rising *saj*, almost entirely barren, and strewn with fine débris, but without rainwater rivulets. It was not until we reached two chains of low hills a good bit farther on that we came across the next watercourse, and it was perfectly dry. On the other side of it the *saj* continued