

a range known as the Ali-alik-tagh, or the Mountain where Ali Hunted. Probably Ajajalik-tagh is a corruption of this name or, as I said before, of Ajaghlik-tagh, especially as the Russian transcription of the Turkish names is generally more or less corrupt.

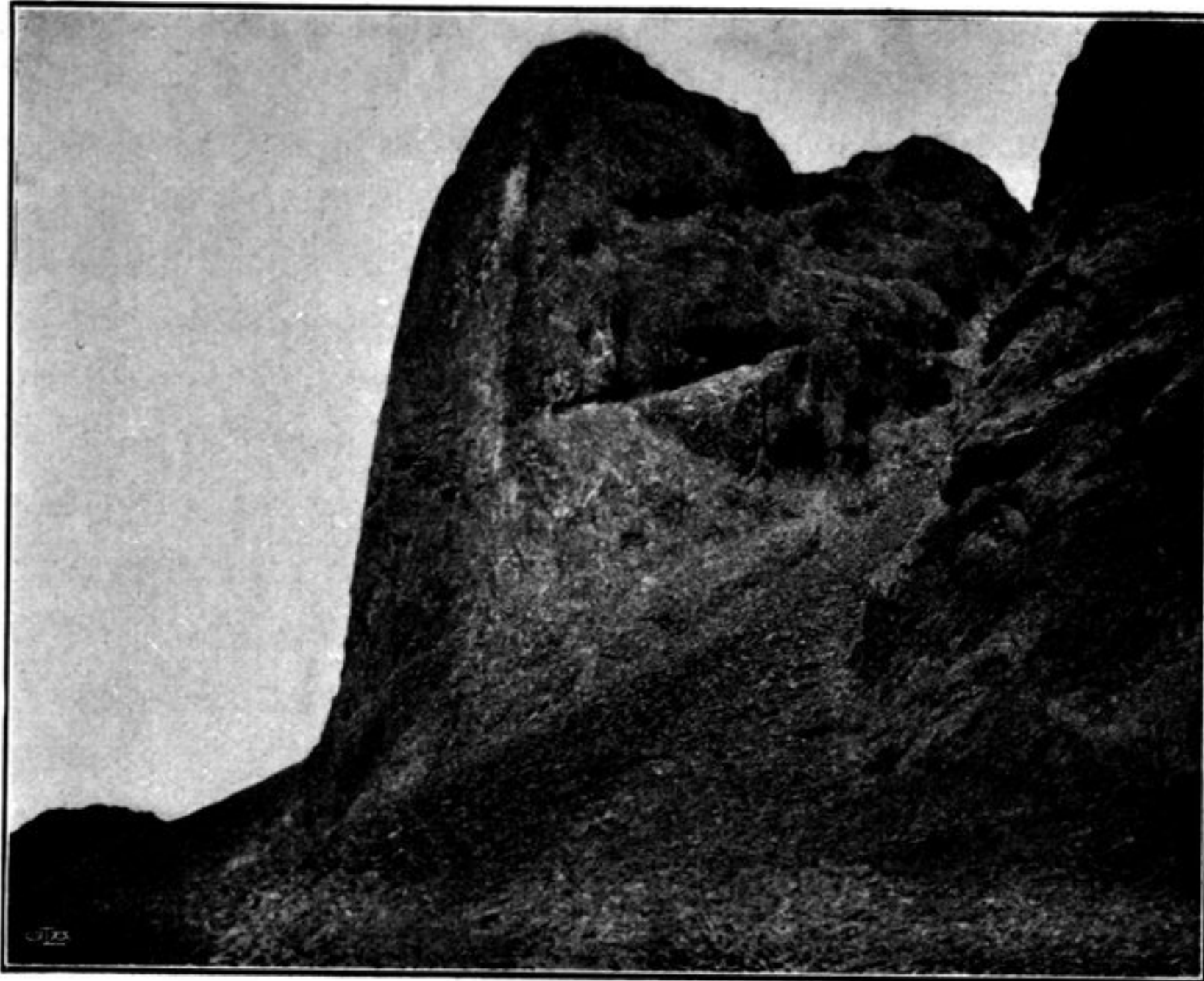


Fig. 153. THE SAME.

At the promontory that projects westwards from the ridge on the right side of the glen, and which we doubled during the course of this day's march, we made an interesting and unexpected discovery, namely a rock-drawing in three separate divisions. These drawings have been made on a portion of the light grey-green schists, which have been polished smooth and stained a dark brown colour by wind and weather, and as they were incised, not very deeply, through the harder rock-»crust» with some sharp iron instrument, they stand out clearly and distinctly against the darker background. Some disconnected lines still remaining show that portions of other designs have been obliterated; from which we may conclude that these drawings go back to a respectable age. Of the three divisions (the lower edges of which are about $1\frac{1}{2}$ m. above the level of the ground) the largest is about $1\frac{1}{2}$ m. high, the second 1 m. high, and the third a little less; the largest figures are about 1 foot long. The scenes represented are hunting scenes. On the smallest division or field a tiger-hunt is depicted, from which it may be inferred that the *motif* is derived from the region of the Kara-koschun or the lower Tarim, those being the nearest localities in which tigers are found. The same localities would seem to have supplied the idea for the second scene, a hunter drawing his bow at a bird, probably a wild-duck or wild-goose. The weapons used are in every case bow and arrows, the bow being always at full stretch, and exhibiting a beautiful and complete curve, with the two extremities bent slightly upwards and outwards. The arrows are long, and in the two cases in which they are distinctly seen, they are furnished with three fangs, and thus resemble a Neptune's trident. Prob-