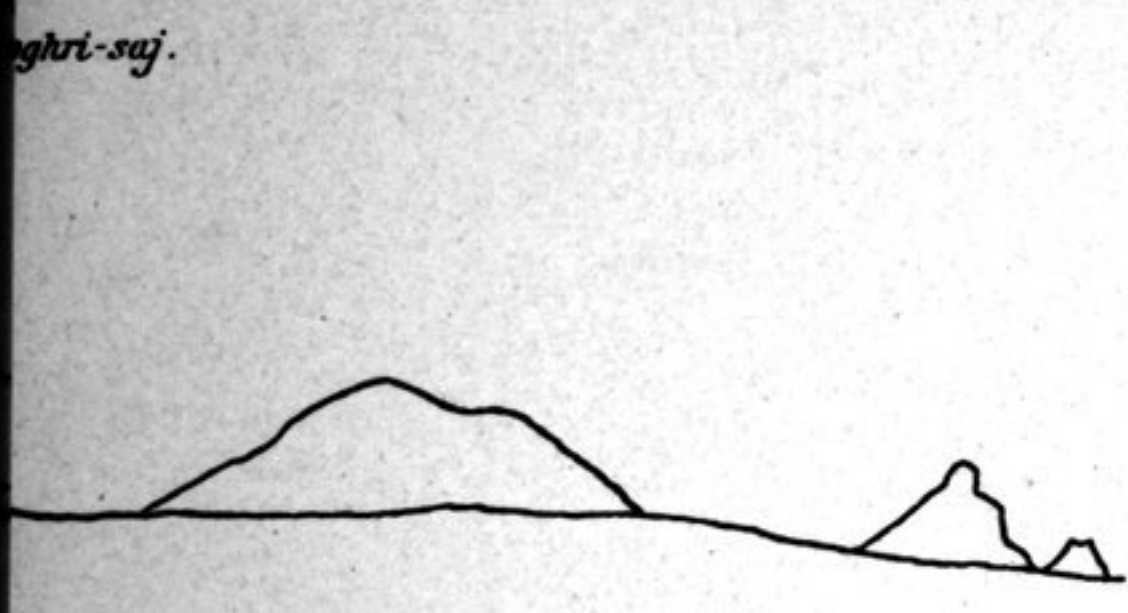
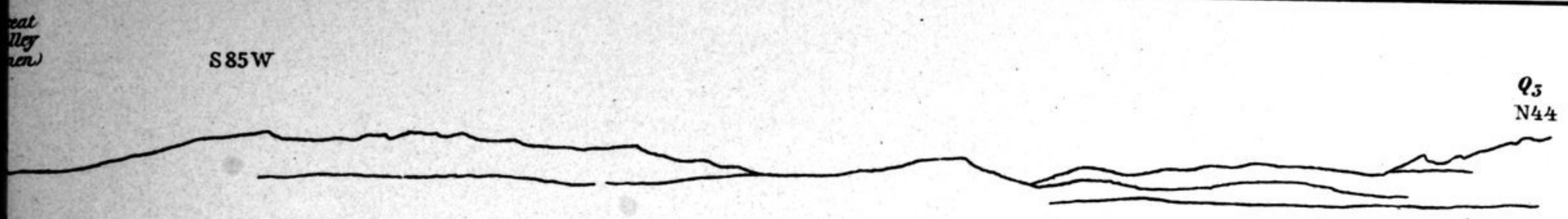


S 85 W

Q<sub>5</sub>  
N 44



its near Camp LX.

Snowy peak to the west  
from lake of Sept. 30.

Ambal-ascikan



The Ambalascikan from a point not far from Mole-kojghan

F 831°W



Mole-kojghan

From a point SW of Mole-kojghan.

Ä<sub>1</sub>

N 19° W



Ö<sub>1</sub>  
N 2° W

in-nor.

N 75° W

N 71° W

N 66° W

N<sub>1</sub>

Y<sub>1</sub>

