

During the latter portion of the trip we were forced by a hard wind from the west-north-west to take the shortest cut to the southern shore; hence we paddled first south, then south-south-east. In this last direction the shore was quite free from ice.

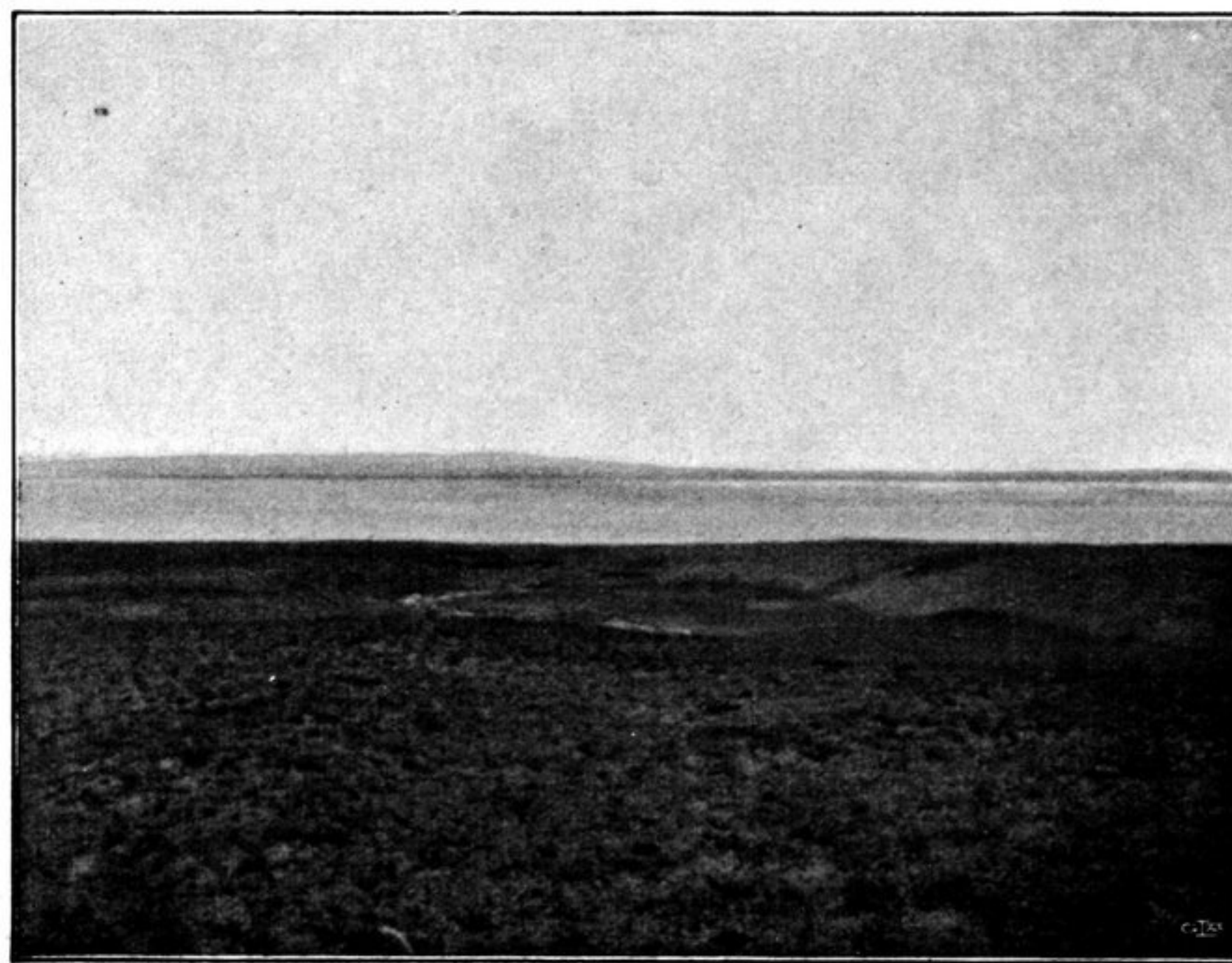
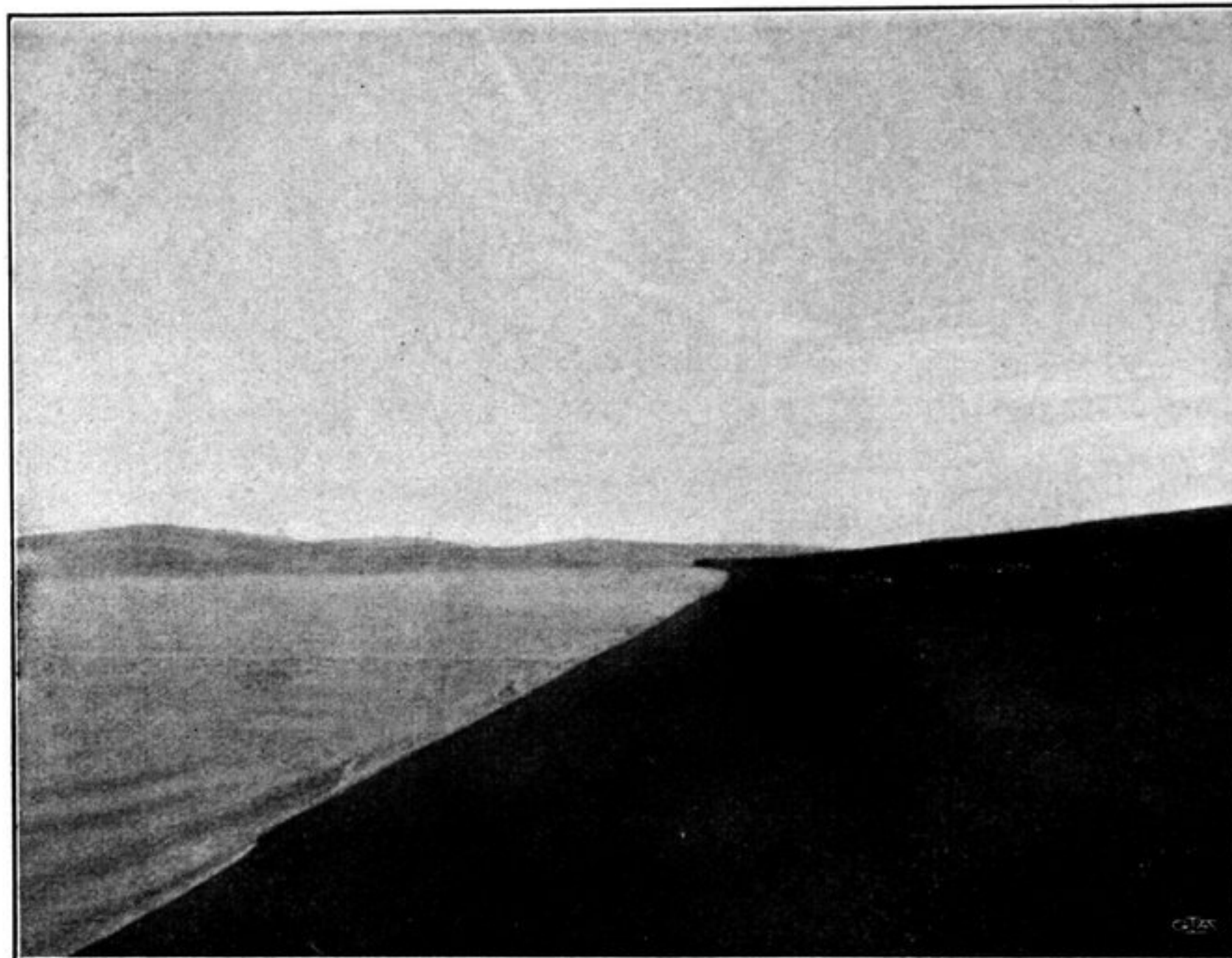


Fig. 176. VIEWS OF THE NORTHERN SHORE OF AJAGH-KUM-KÖL AT CAMP LXXXIII.

The soundings we obtained were as follows: 1.92, 2.84, 3.03, 3.44, 3.94, 4.62, 5.24, 6.05, 7.13, 8.49, 10.29, 12.38, 14.00, 15.56, 16.59, 17.52, 18.94, 19.63, 18.62, 17.94, 16.75, 9.81, 5.48, 4.90, 4.29, 3.78, 3.25, 2.83, 2.36 and 1.46 m., the last-quoted depth being taken at rather more than a kilometer from the shore. At the same distance