

cended into the glen of Kum-bulak, the loftier grew the rocky walls, until we reached almost the end of the glen, when they rapidly sank, sending out low spurs towards the north, to the flat plain of the Tschimen valley. Meanwhile the deeply incised

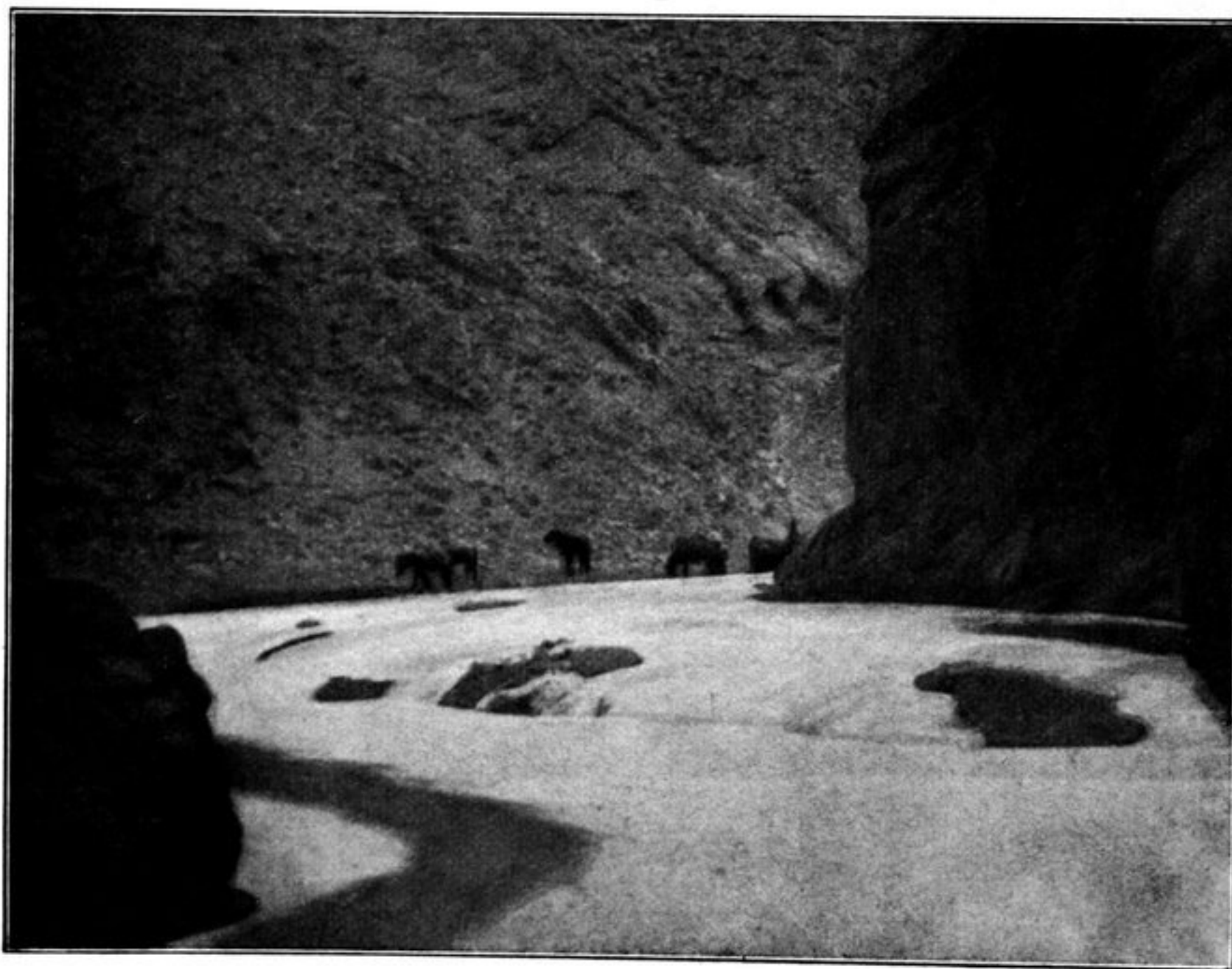


Fig. 183. VIEWS FROM THE GLEN OF KUM-BULAK, BELOW MY CAMP (LXXXVII).

glen stream descends by short quick windings towards the north-west, being met by smaller gorges and ravines from both sides. Generally the bottom is choked with rounded, polished stones and detritus that have fallen from the heights above, and frequently form steps and shelves, down which the stream (when there is one) must