

courses and the spring-water stream of Jusup-alik, the saj forms a very slight swelling, so slight indeed that its presence is only suspected from the watercourses. Camp LXXXVIII was pitched on precisely the same place as Camp LXXIV of our previous excursion, thus giving me a valuable point for controlling my observations.

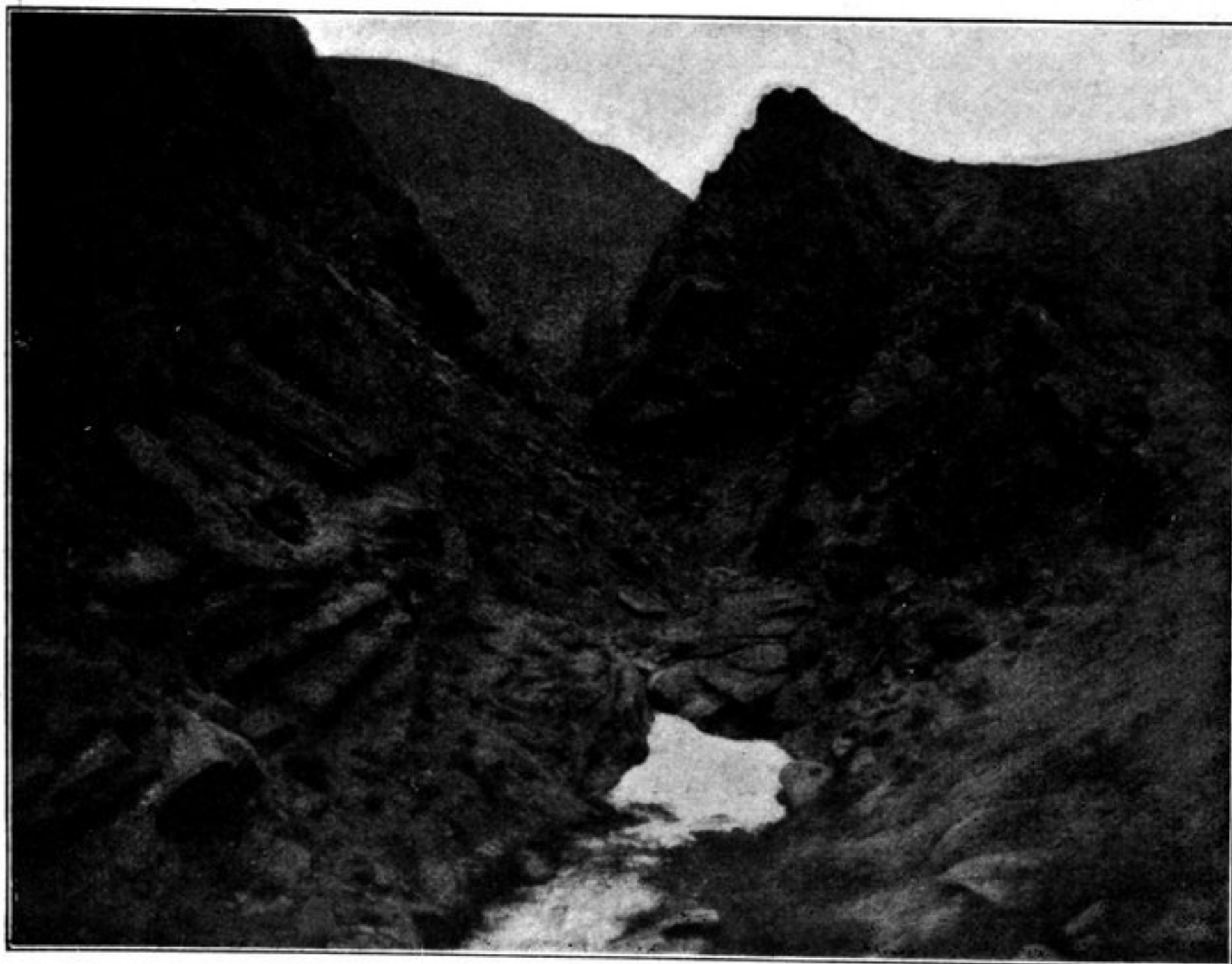
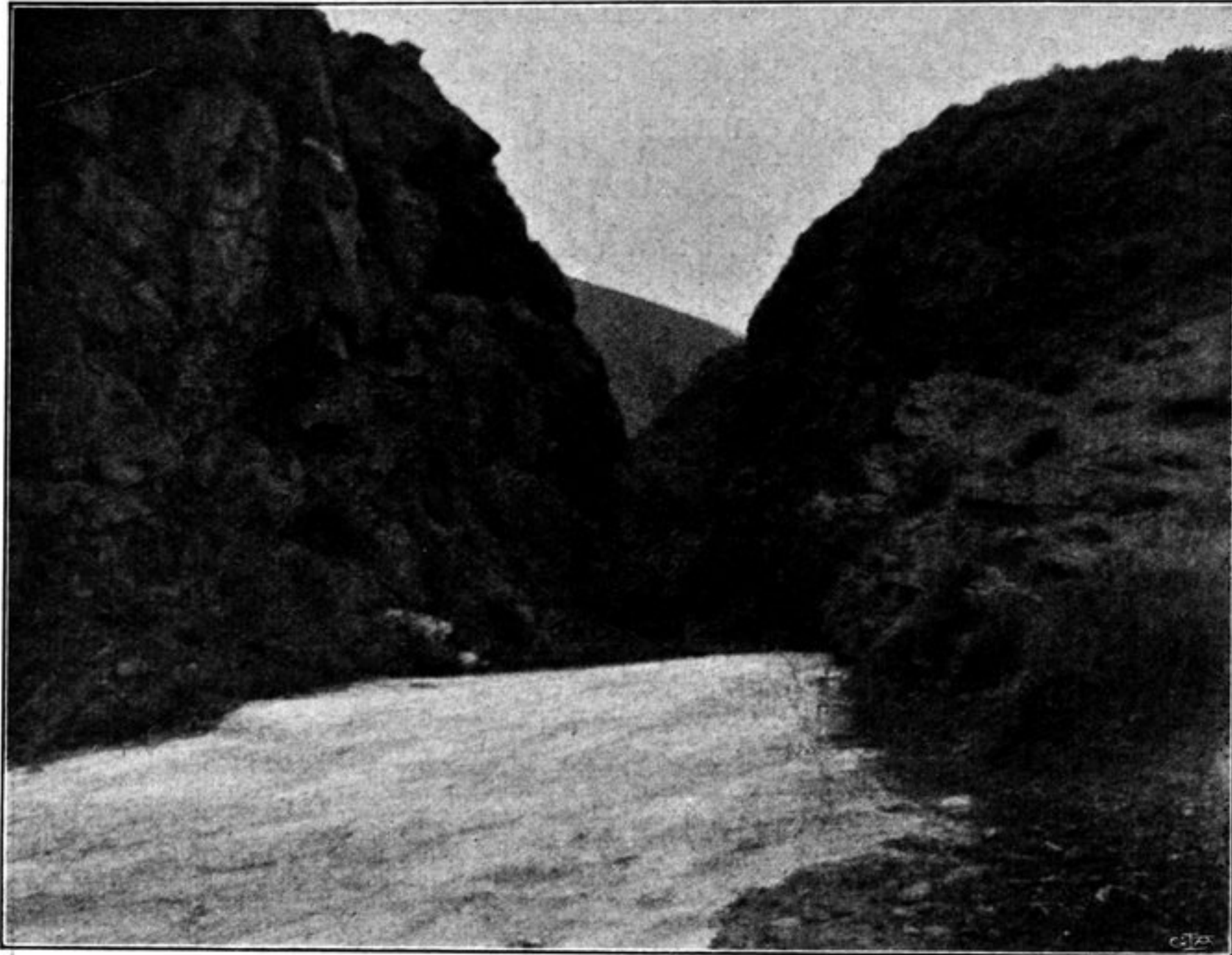


Fig. 185. SOME OTHER VIEWS FROM KUM-BULAK.

The transverse glen of Kum-bulak is, as I have said, cut through the granite, which is here of several varieties, red and grey, often bedded at 70° to the S. 75° E. At the extreme end of the glen however there is a hard dark, finely crystalline