

Add to this the roots of the grass, which in some quarters likewise serve to retain the disintegrated material; whereas the arid mountains are destitute of this means of assistance. Of course there exist intermediate forms between these two extremes, which cannot very well escape the observation of one travelling across

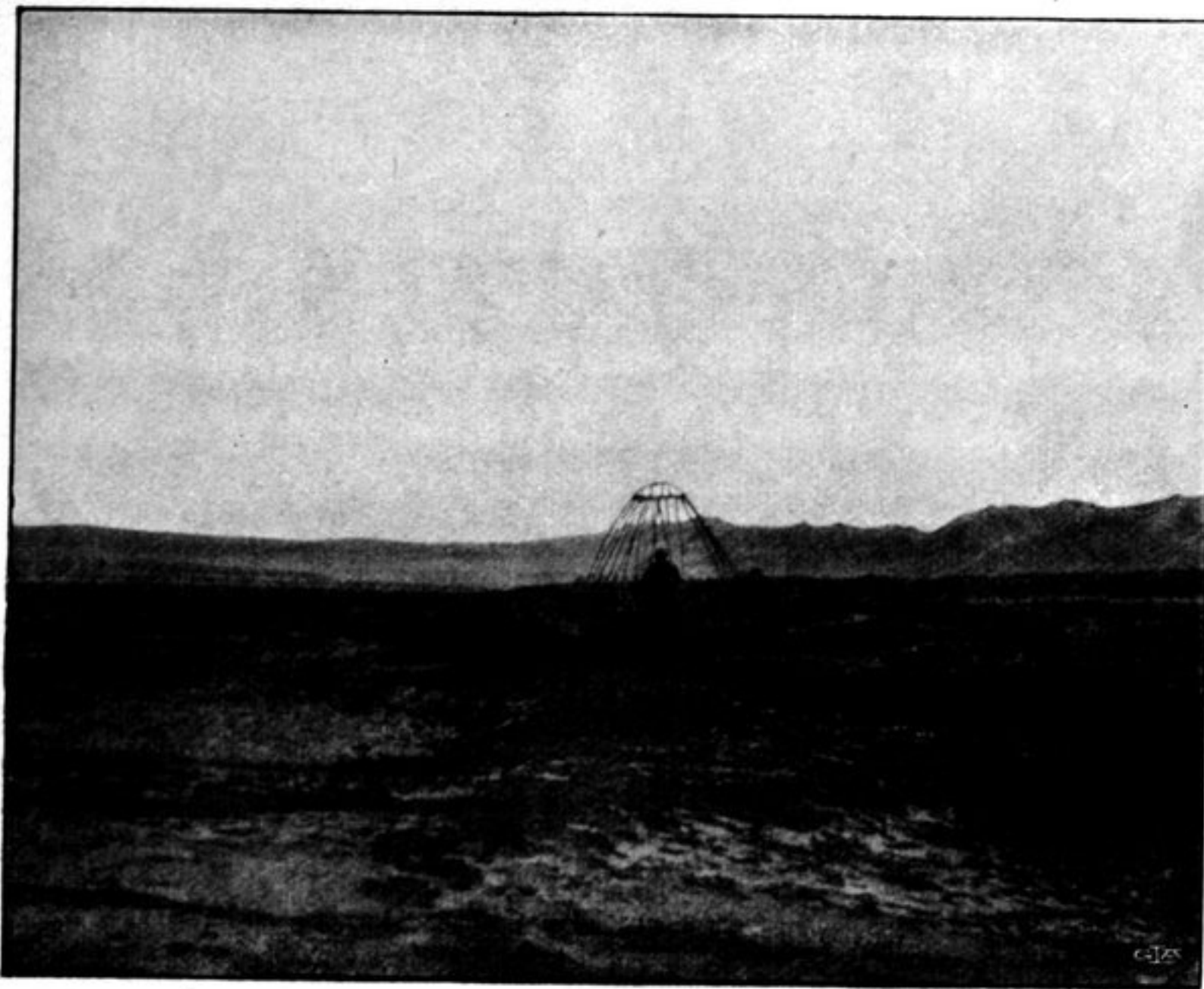


Fig. 246. SOME VIEWS FROM THE OPEN ASTIN-TAGH VALLEY.

northern Tibet from north to south. Indeed similar transitional forms may be observed in one and the same range, *e. g.* in the Astin-tagh itself, for in its more westerly parts we have found that there exist vegetation, and even water, as for example at Tatlik-bulak and Basch-jol, but here the range is both higher and more