

roads which it has made upon the rocky walls at the sharp bends, as well as the vast quantity of gravel and blocks of granite and greenstone which litter its bed, alike tell the same tale of the excavating power of the torrent. On both sides the glen is joined by short, steep side-glens, often of large size, sometimes breaking through the gravel-and-shingle terraces and even being equipped with such themselves, and sometimes piercing the bare rocky walls; in this latter case they terminate in narrow, yawning entrances like portals leading into the very heart of the mountains. After leaving the camp in the side-glen, we kept at first to the slopes on the right-hand side of the glen, which were steep, but soft, being fairly well grassed over. But upon coming to a projecting buttress, we were forced down a precipitous brae into

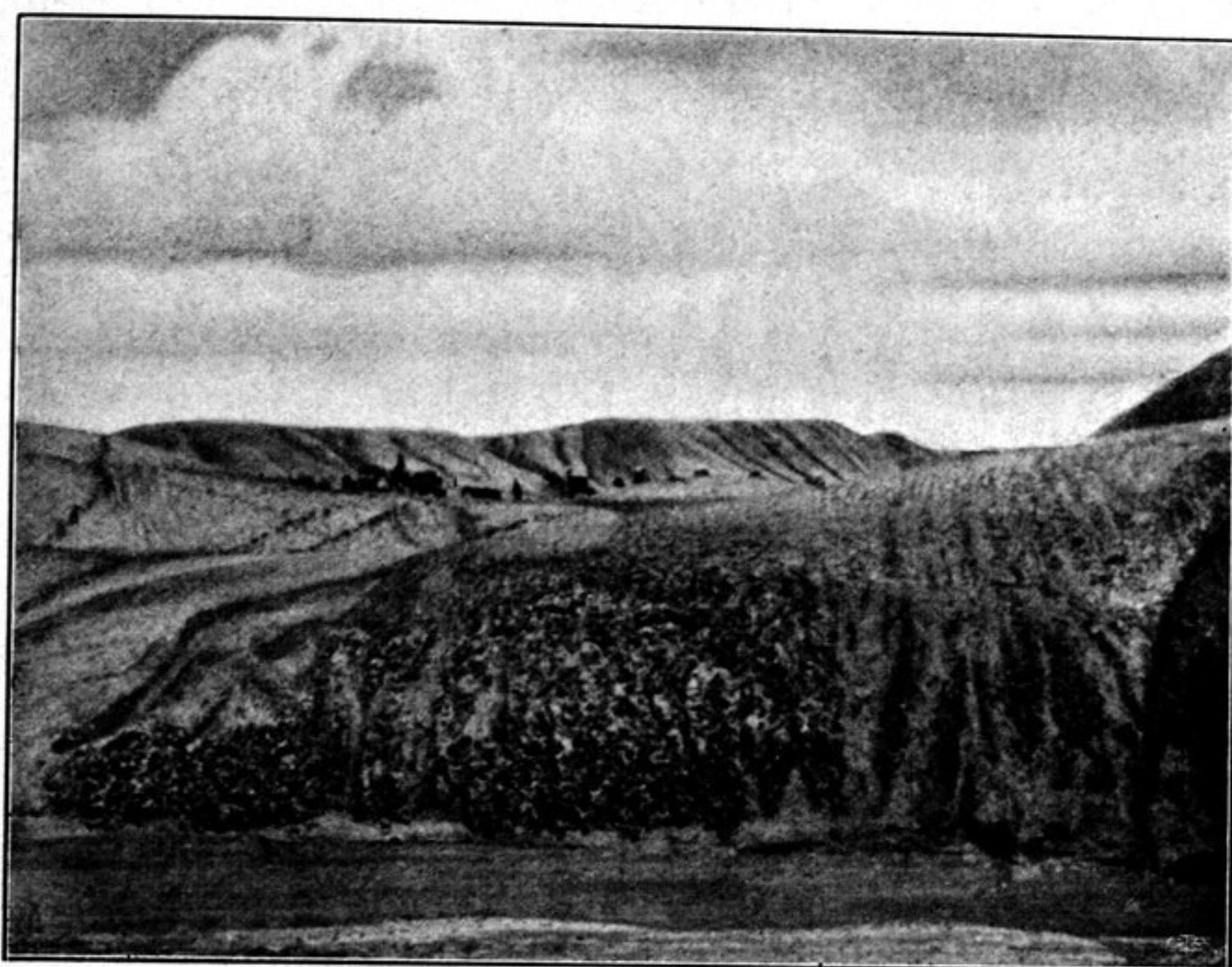


Fig. 280. THE SAME.

the bed of the stream. Right at the elbow there stands, in the very middle of the glen, a small narrow butte (fig. 278), about 15 m. high, quite isolated, and very peculiar — in fact like a column of stone sticking up out of the gravel at the bottom. At this spot there comes down from the right a side-glen, with a very contracted opening between walls of rock, and out of that rocky passage protruded a tongue of ice, issuing from a spring a little higher up the side-glen. The fourth side-glen on the right is called Duntsa; it too possesses a spring, which gave rise to a brook that for almost all the rest of the way down the main glen formed a sheet of ice, sometimes narrow, sometimes broad. Bushes again made their appearance in the lower part of the glen. The glen of Duntsa is pretty large and leads up to a pass. In it there were at that time no Mongols. Then for a space we kept to the terrace on the left side of the glen, it being there low. Still the track was throughout rather difficult, especially because of the great quantity of débris. For some distance the terraces on the right of the glen were double; then they decreased rather rapidly in height, and the bed of the stream grew broader. At the same time the mount-