

CHAPTER XXIII.

NORTH AND WEST OF THE ANAMBARUIN-ULA.

On 18th January we made a short stage, but the country traversed was uncommonly interesting and picturesque. First we crossed over two chains of hills lying north and south, and separated by a minor ravine, which however was fairly deep. This brought us to the verge of the very large and striking glen of Tsagan-

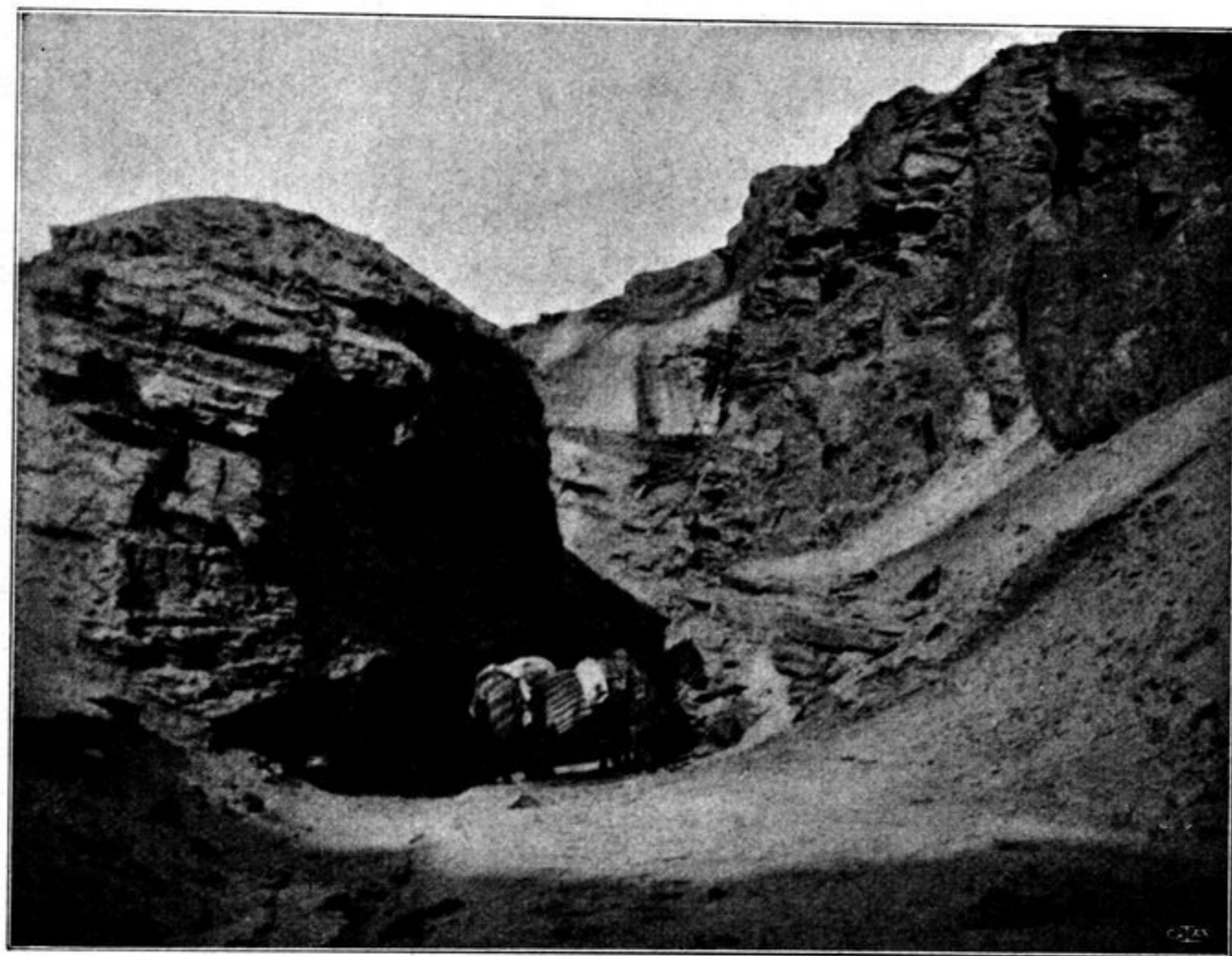


Fig. 287. THE GORGE LEADING DOWN TO DSCHONG-DUN TSA.

davo or Aksä; its great depth, 40 m. on the right side and 50 m. on the left, is rather obscured by its great breadth. Black cliffs form the edge of its left escarpment. On the south, that is up towards the Anambaruin-ula, it pierces a minor range of foothills, and is joined by a side-glen coming apparently from the southeast. It is backed at the head by a great massive, overtopped by several snowy