

continued for an hour. In the country that we then proceeded to traverse there was a considerably greater quantity of snow than hitherto. The track was much better, and it was only at the beginning of the day that we had any ravines to cross over, and they ran down to Tuj-murtu. To the north, we saw in the nearest desert range a gap known as Dava-go, lying to the west of Tuj-murtu. A broad, shallow glen, with an abundance of vegetation, is called Bing-go. After crossing over a minor spur running towards the north-west, we came down into the glen of Lu-schui-go. After that we descended for a good bit across favourable ground, sheeted with snow. Immediately on our left we had the mountains, with their wild crags and cliffs and capricious glens. Here too we were able to distinguish apparently

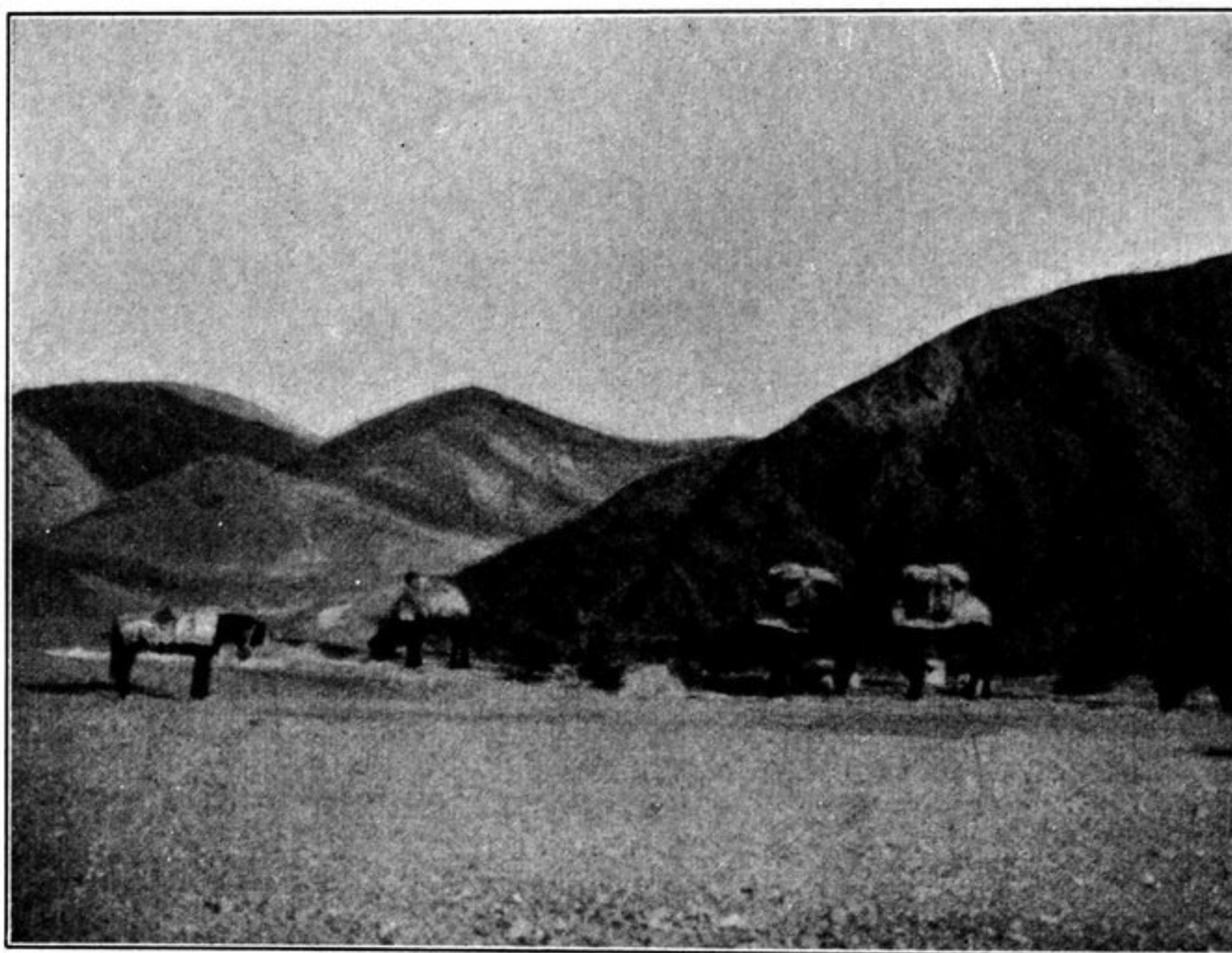


Fig. 301. THE PLACE WHERE SNOW WAS FOUND IN THE KURUK-TAGH (SEE VOL. II P. 108).

two different crests. We now crossed over the lowest point of the entire region, namely a broad watercourse, into which gather all the drainage channels of the locality. After that we again ascended towards the south-west, going up by the glen of Ma-chung-go, pretty big and distinctly outlined. This led us to the south. On our left, that is to the east, rose craggy spurs of notable dimensions, and on the opposite or western side smaller, detached groups of mountains. We saw the upper part of the Ma-chung-go to the south-east. Farther towards the north this is reported to be joined by the Lu-schui-go, and then to unite with the Bing-go, and finally to enter the Dava-go.

The track soon quitted the Ma-chung-go, and climbing up to a small threshold, proceeded to ascend a little side-glen to the west. Once more we turned our faces towards the south, the mountains receding somewhat on the left, though we were unable to see them clearly for the blinding snow; while to the north-west we perceived the nearest little chain of foothills. The next watercourse is called Er-to-schui; it is rather shallow and insignificant, and possesses not only scrub vegetation, but