

to its junction with the Tscharklik-su, we left it on our right and crossed over the flat, soft spur which separates it from the nearest side-glen on the south. This last is more energetically excavated and possesses a stony bed, as well as rather decidedly accentuated erosion terraces. This glen also runs towards the south-west, and at Haschäklik joins the Tscharklik-su, forming an expansion with good grazing

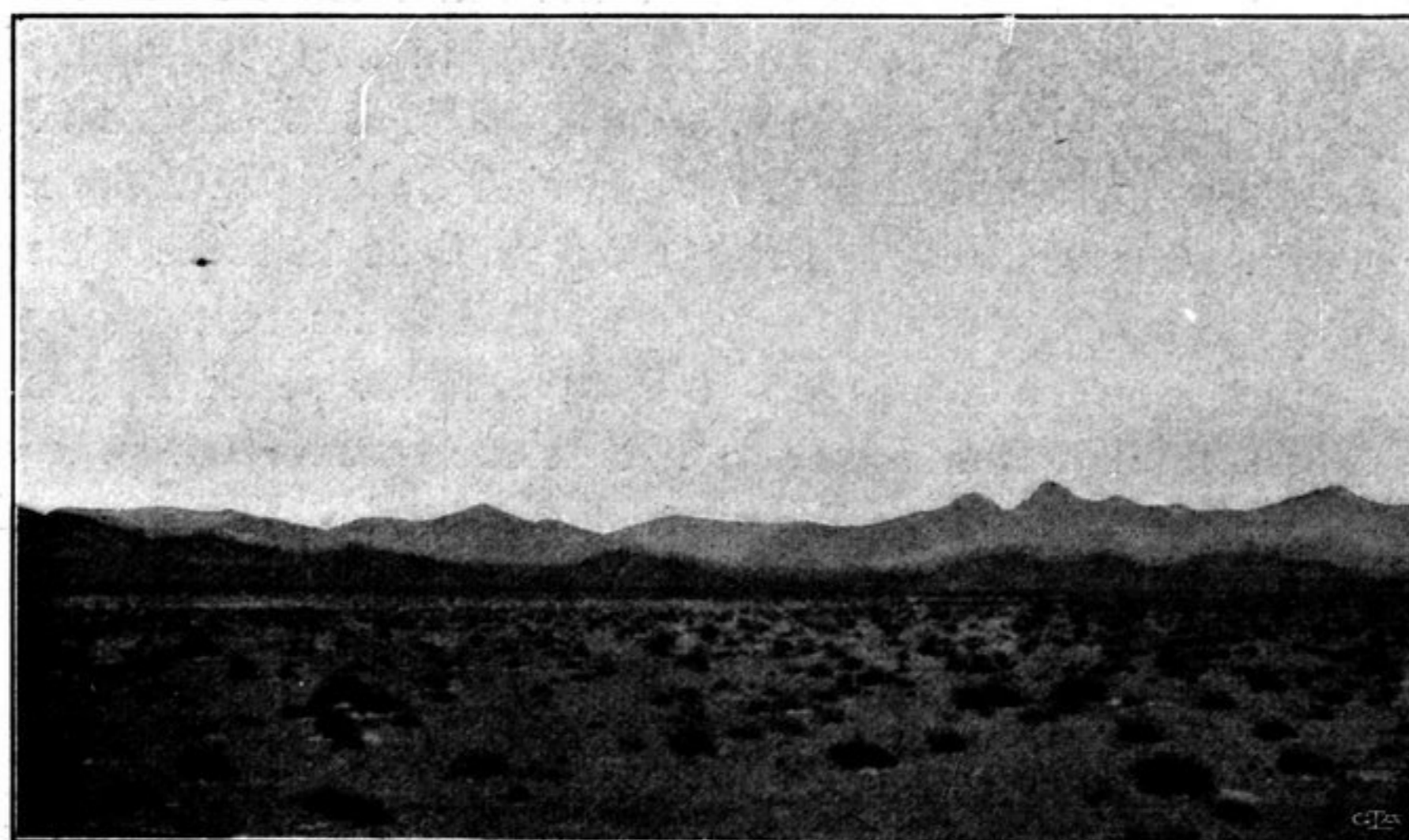
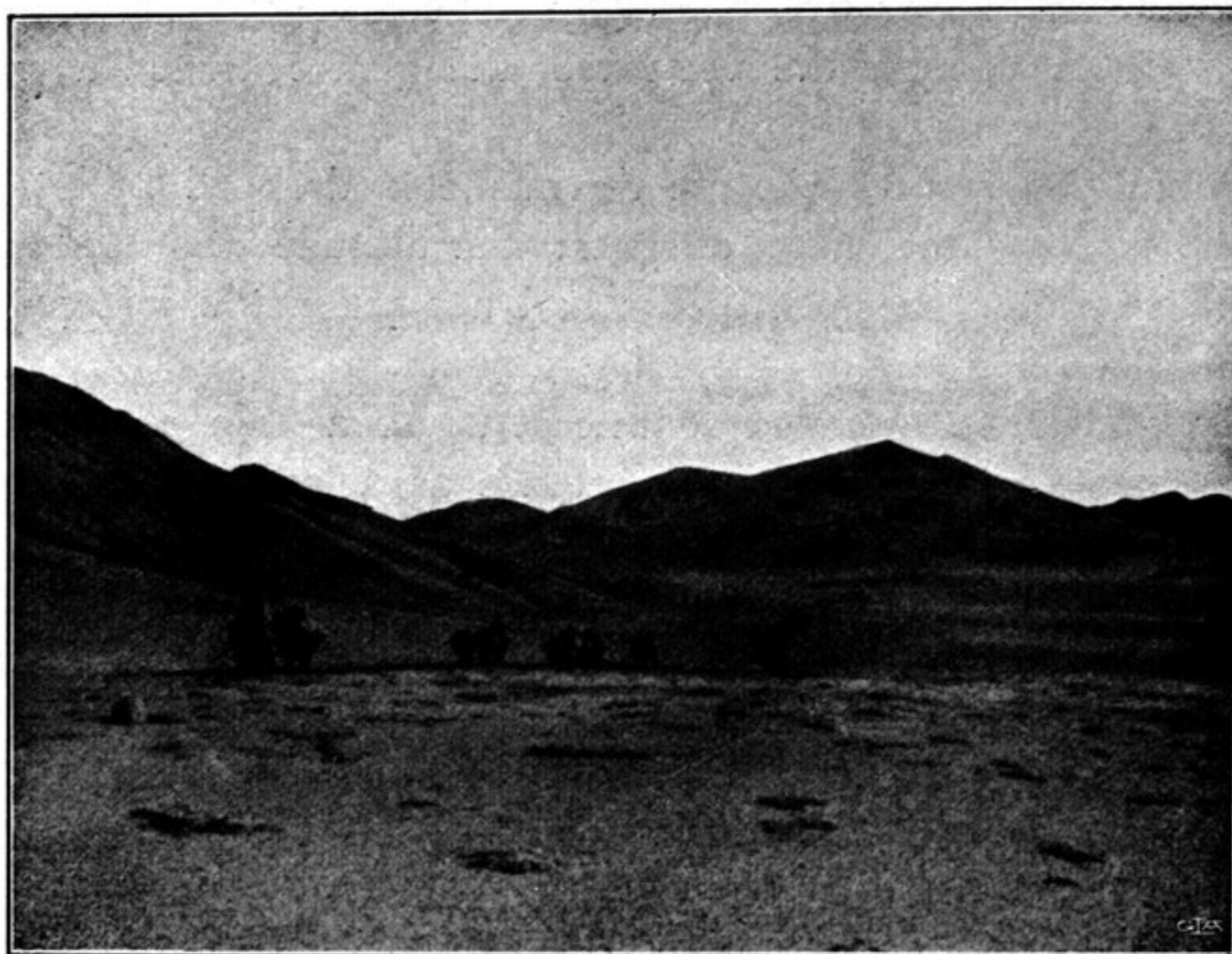


Fig. 318. OPEN VALLEYS IN THE UPPER ASTIN-TAGH.

and fuel. Several similar side-glens debouch here upon the principal glen, the upper breach of which we had avoided by making a rather wide detour. If the glen of Tscharklik-su were practicable all the way, the distance between Mätschit and Haschäklik would be essentially shortened.

At the little pass over the water-divide between the transverse glens of Koschlasch and Tscharklik-su, we found the same black schist as before, dipping 59° to-