

a very considerable mountain-range. We had also a range of moderate elevation on our right. The country still continued to undulate a good deal, for we crossed over a series of minor swellings by means of flat thresholds or saddles. Hard rock was however rare. All the watercourses carried water, which eventually made its

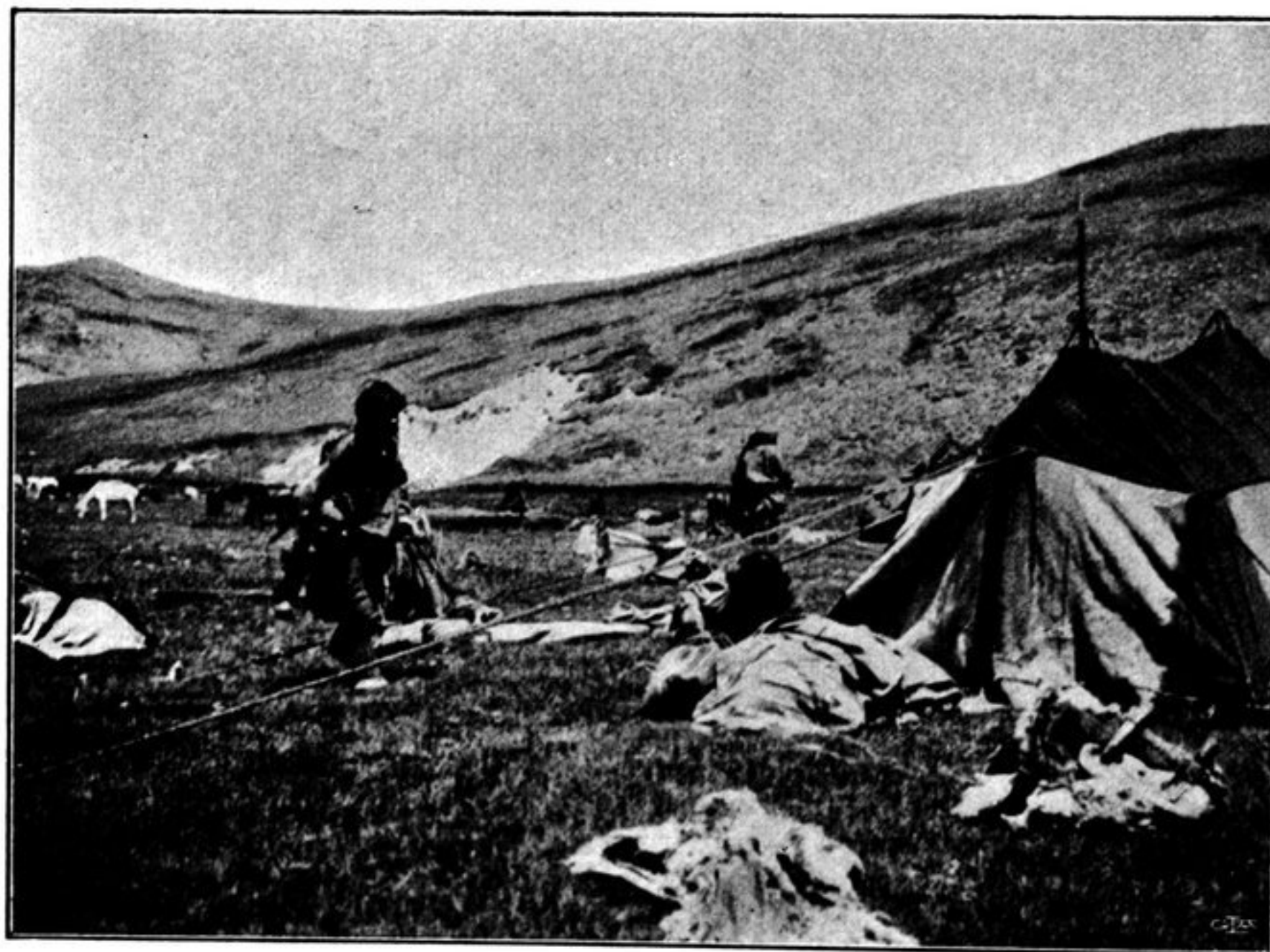


Fig. 380. TIBETAN TENT SCENES.

way to the river on our left. The grass was again excellent, and traces of encampments were pretty common. The river was now for the most part screened by the chain of heights which runs along its right bank. The track we were following was soon joined by another that appeared to come from the river. Anyway it ran towards the north and bore fresh signs of yaks having travelled along it, and later