

The road, which we still continued to follow without knowing where it led to, carried us towards the south-south-east, across the broad cauldron valley, or more correctly the eastern end of the great latitudinal valley. Some 10 kilometers farther to the east, it appeared to be bounded by low hills. We crossed over a

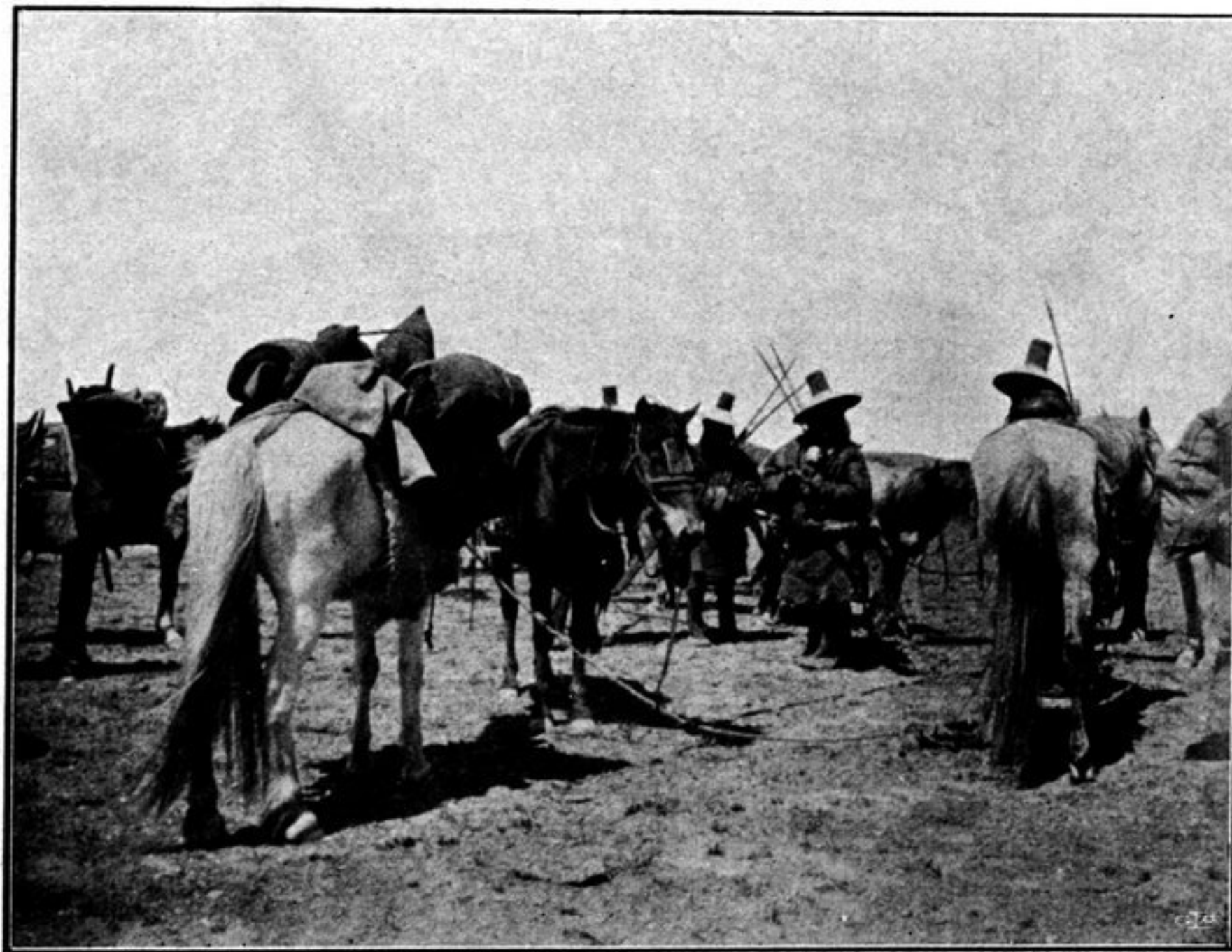


Fig. 385. TIBETAN CAVALRY.

great number of brooks, containing but little water, though bordered by marshy, treacherous ground. All these watercourses gather into a river, that runs towards the N. 70° W., and no doubt terminates in some small lakes which we saw south of Camp LI. A few kilometers beyond our last camp the road bifurcated, one