

branch running towards the S. 78° E., towards a gap in the hills. That branch, which we passed on our left, leads no doubt to Naktschu. Not far from the bifurcation there is an obo on the plain, that is a number of slabs of red sandstone

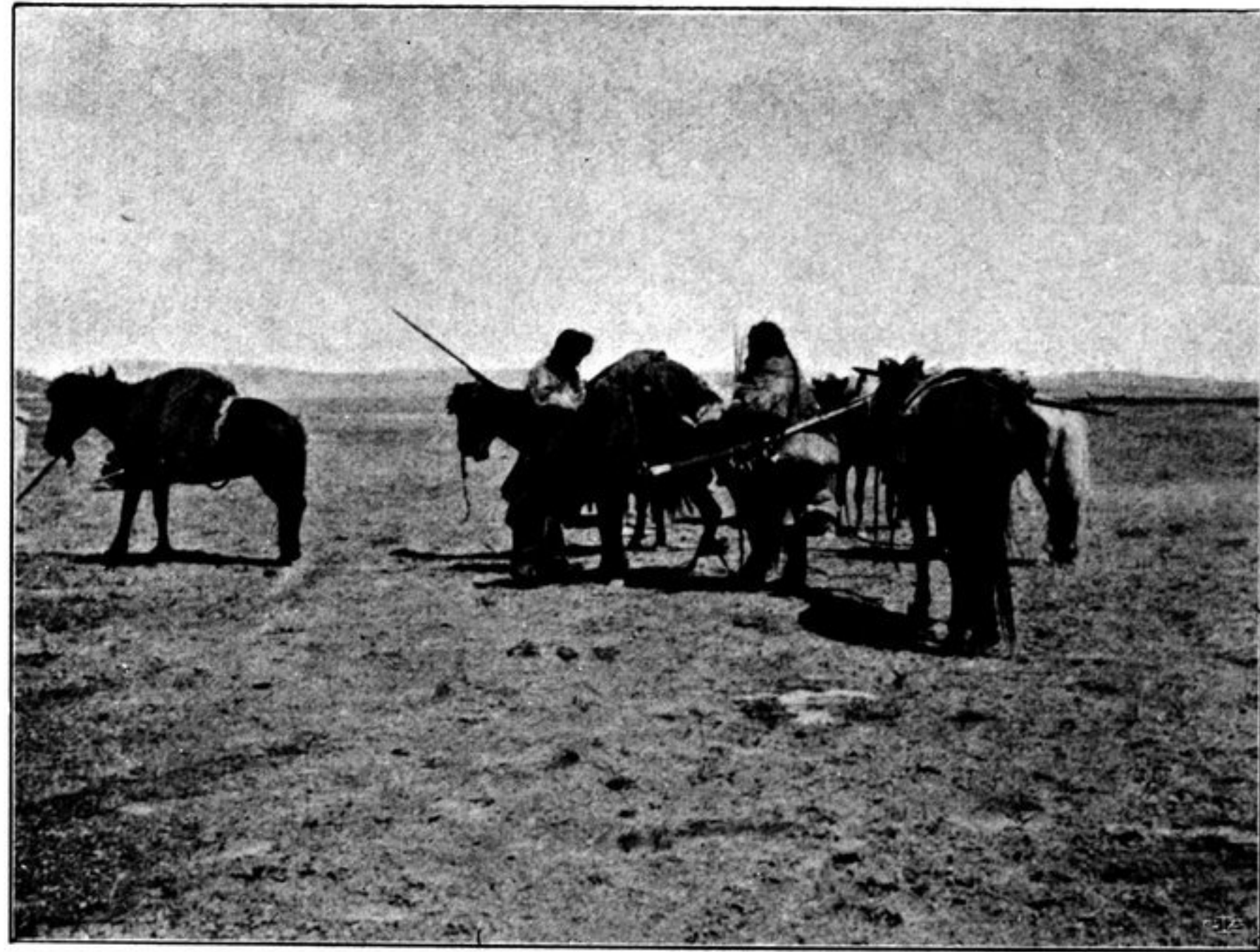
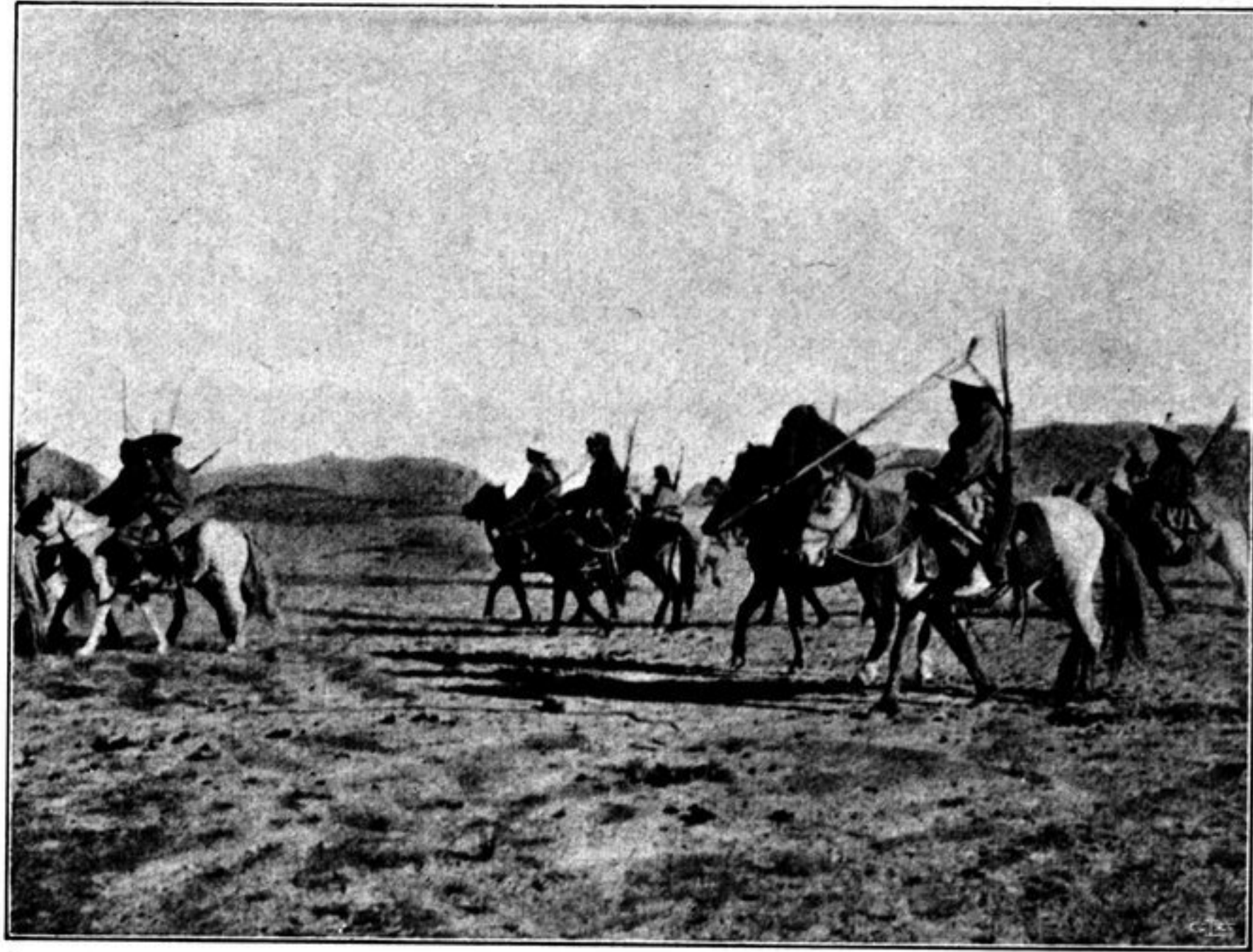


Fig. 386. TIBETAN CAVALRY.

bearing engraven on them the formula »On mane padme hum». Here again we met another caravan of about a hundred yaks, travelling north with light loads. We nowhere saw solitary travellers either on foot or on horseback: it seemed to be the custom to travel in large, well-armed companies.