

Fig. 419. CAMP VIII LOOKING N 60° E.

On 16th August we still continued our journey east along the same latitudinal valley, crossing over a couple of glens and streams from the south. Probably all these transverse glens converge into one or two large glens before they join the Kara-muran. Our latitudinal valley sloped gently upwards towards the east; the altitude of its upper part, an insignificant water-divide, amounted to 5039 m. Here a little lake sometimes forms. East of that extremely flat threshold the country again opens out into a plain that inclines gently towards the north-east, and is bordered on the north by the range which we had hitherto had on our left hand. Here all the streams from the south unite into a large glen, which cuts through the last-mentioned range. Passing this glen on our left hand we proceeded up a side-glen running towards the east-south-east and having massive ranges on both sides of it. The one on the north, close to the foot of which the valley watercourse clings, is very steep, often indeed precipitous, and consists of green schist dipping 35° towards the N. 45° E. The southern range on the other hand has a more gradual slope,

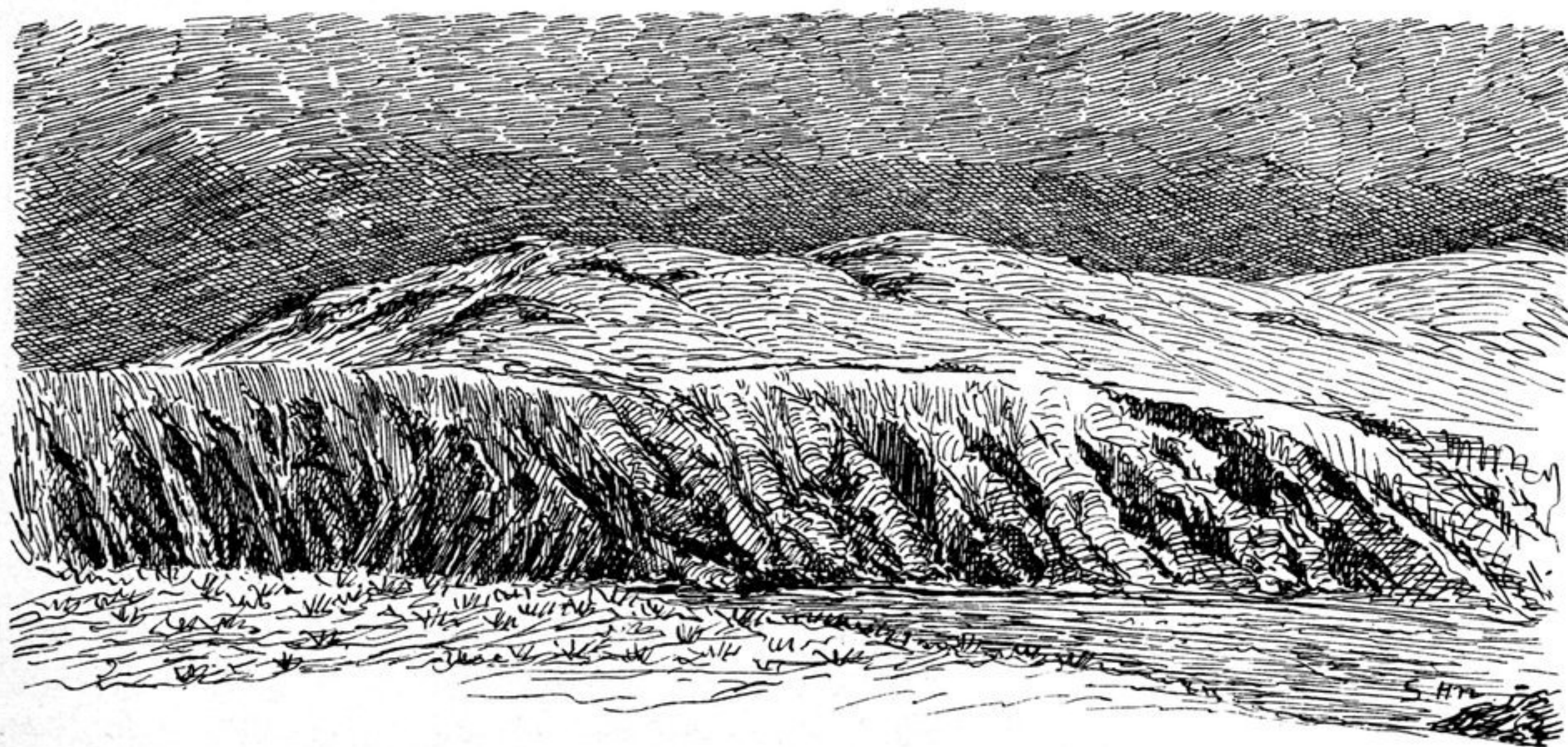


Fig. 420. CAMP VIII LOOKING SE.