

TO THE SATSCHU-TSANGPO: A PADDLE DOWN THE SAME.

summit of the pass we saw to east and west projecting spurs of the same range, and at a greater distance to the east a bigger free-standing mass; while before us to the south was a bare red chain, which however we apparently could get round on the east. A little rivulet ran down from the pass first towards the south-south-

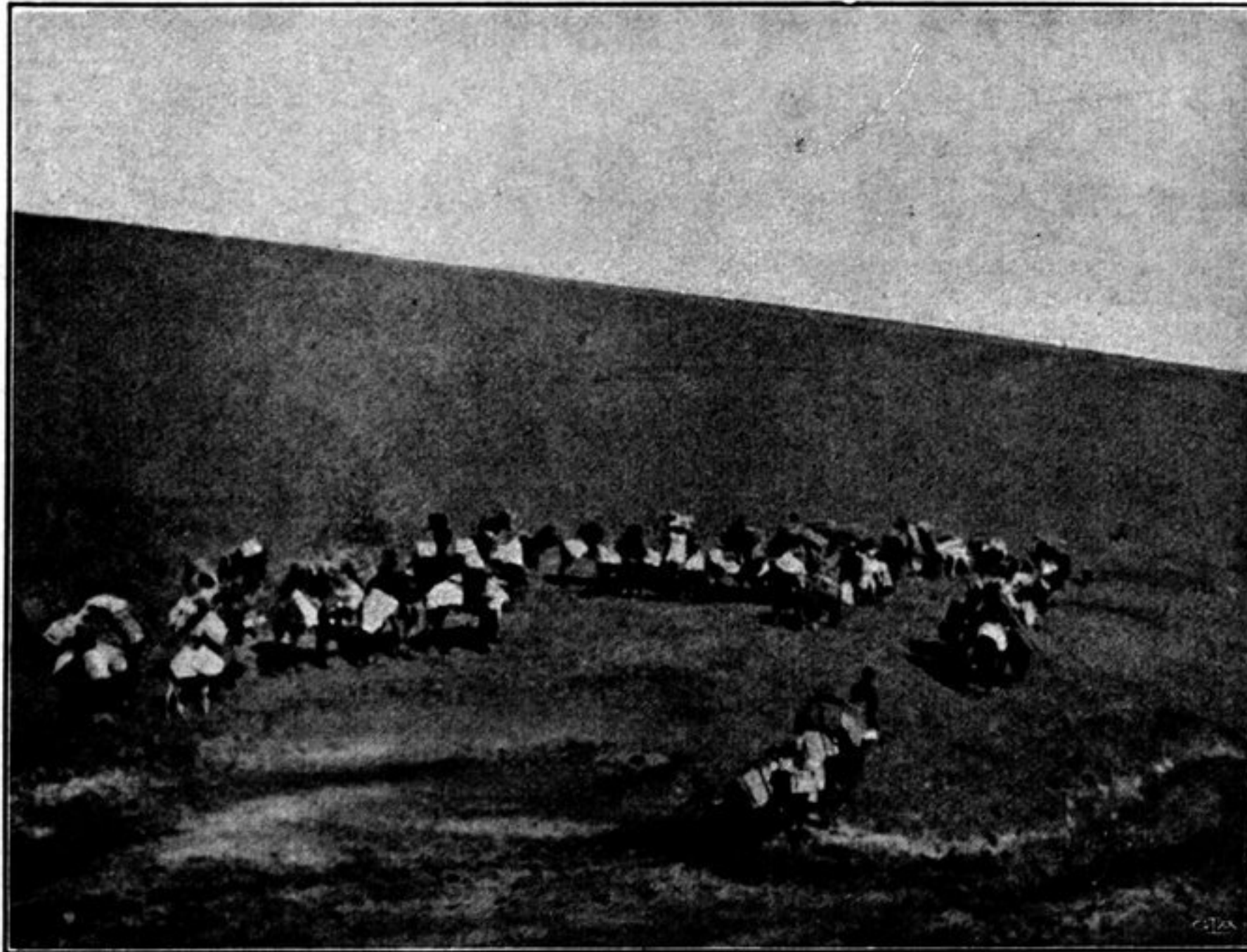


Fig. 5. VIEWS TAKEN ON THE FLAT OPEN PLATEAU OF CENTRAL TIBET.

east, then towards the south, and finally towards the south-east. Contrary to the usual custom its bed was softer than the adjacent country; for while it consisted of coarse loose sand into which our animals sank, the dry exposed mud at the side was hard. We encamped on its right bank beside some small freshwater pools at