

an altitude of 5068 m. The grazing here was worse than it was in many places farther north. Generally speaking the route that we had pursued towards the Tengri-nor was far more convenient as regards contours than this present more westerly route that we were now pursuing.

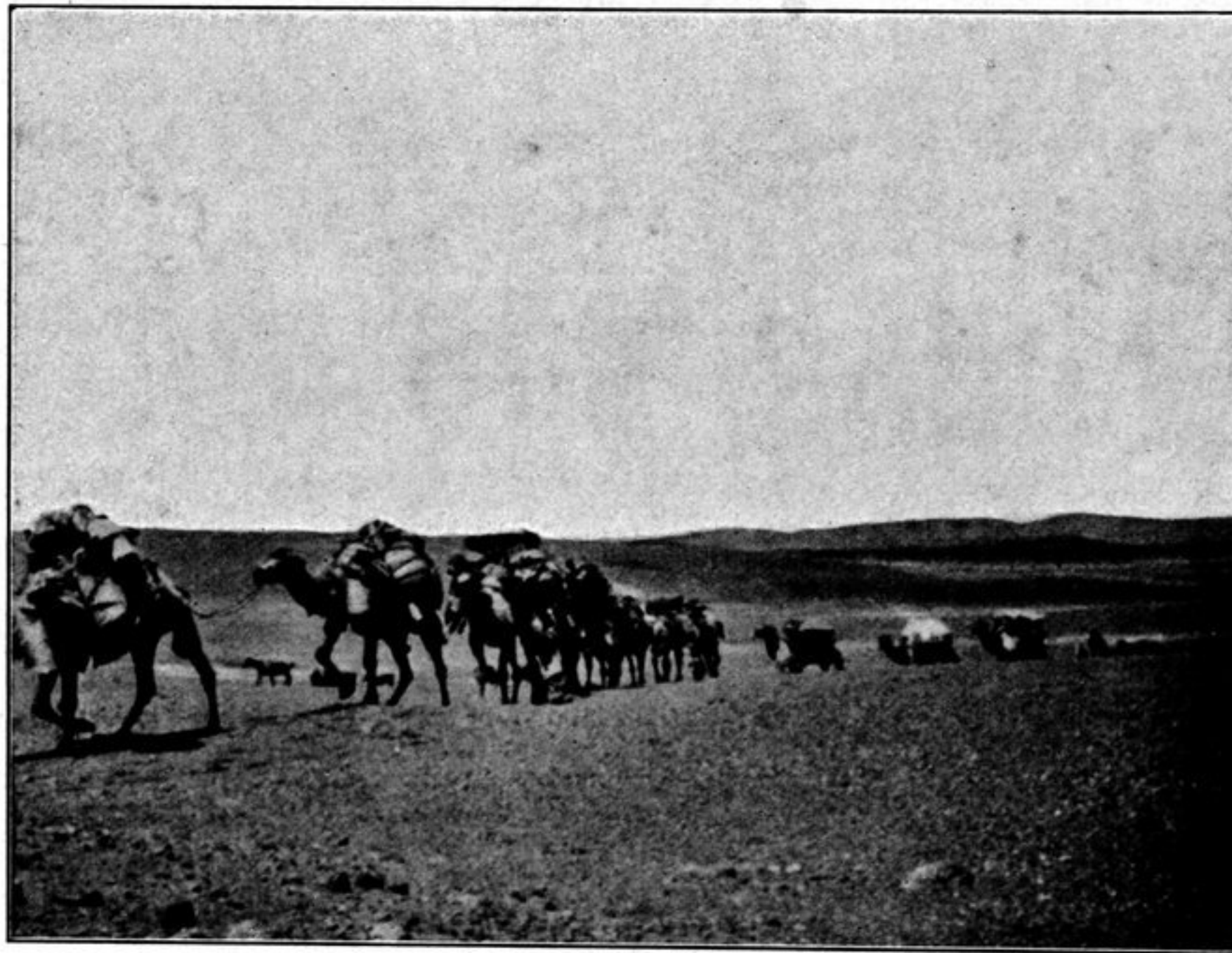


Fig. 6. VIEWS TAKEN ON THE FLAT OPEN PLATEAU OF CENTRAL TIBET.

August 29th. The nights were now beginning to be colder, and this morning the ground was white with heavy hoar-frost, but within half-an-hour after the sun rose it had nearly all disappeared, except on the higher slopes of the mountains facing north, where it remained until noon. The going was good, owing to the