

absent, for the shores of the lake are usually very flat and the lake itself very shallow next the shore, and it is only where the slope is somewhat steep, as at the two places mentioned that these ramparts are distinctly perceptible. Nevertheless they afforded a clearer proof than anything I had yet seen, that the lakes in Tibet

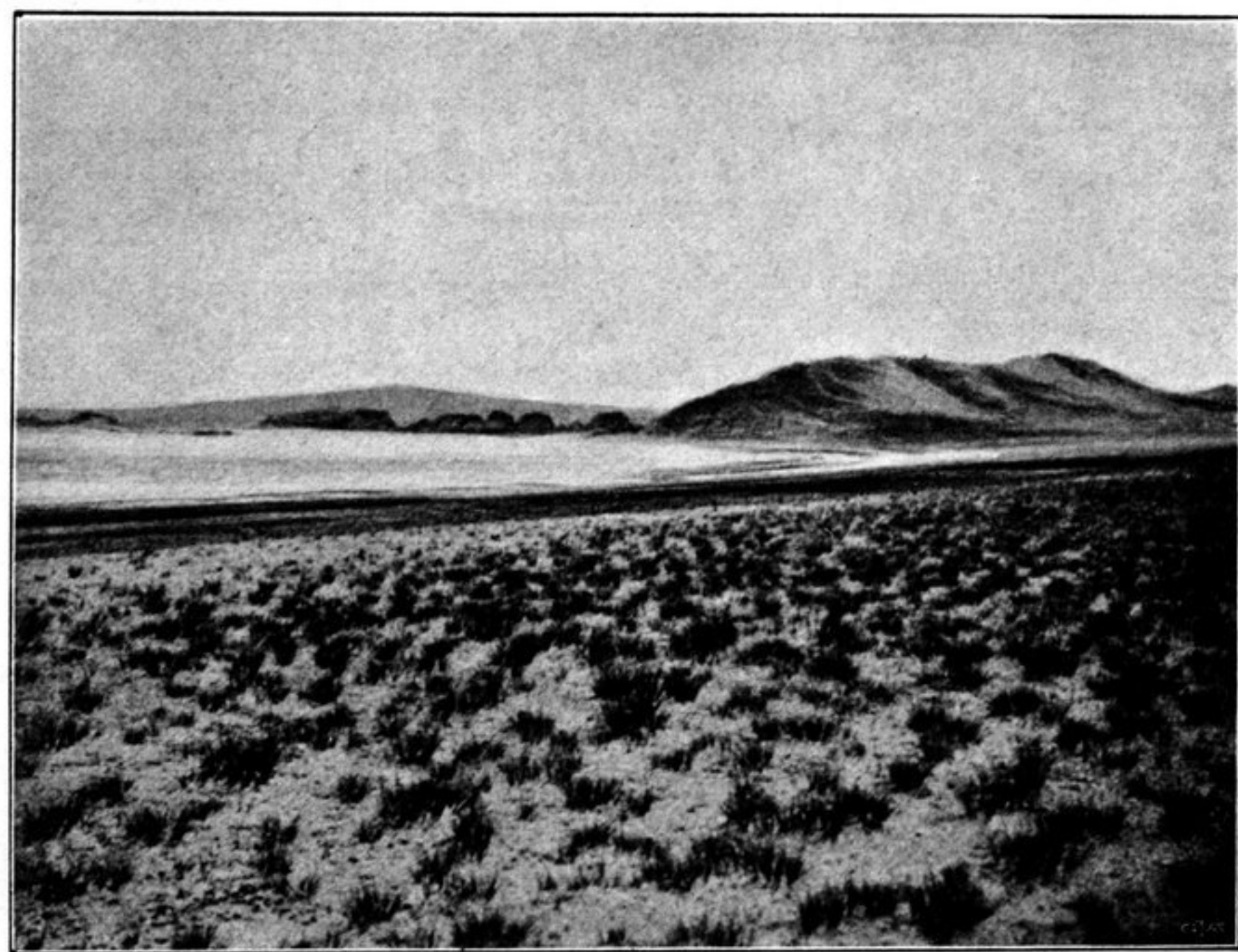


Fig. 17. THE PENINSULA ON THE NORTHERN SHORE OF SELLING-TSO.

are shrinking. Selling-tso is contracting at a rapid rate. Along the existing shore the beat of the waves — and in a lake of the size of the Selling-tso they are capable of exercising a considerable effect — is busy building up a fresh rampart of the same character. Of the older ramparts it was easy to see that the highest