

for the Selling-tso, if one may judge from the small broken mountain-ranges which form peninsulas and promontories round its shores, it would appear to belong orographically to two different latitudinal valleys. The panorama of the mountains, which unfolded itself when seen from that part of the northern shore along which I

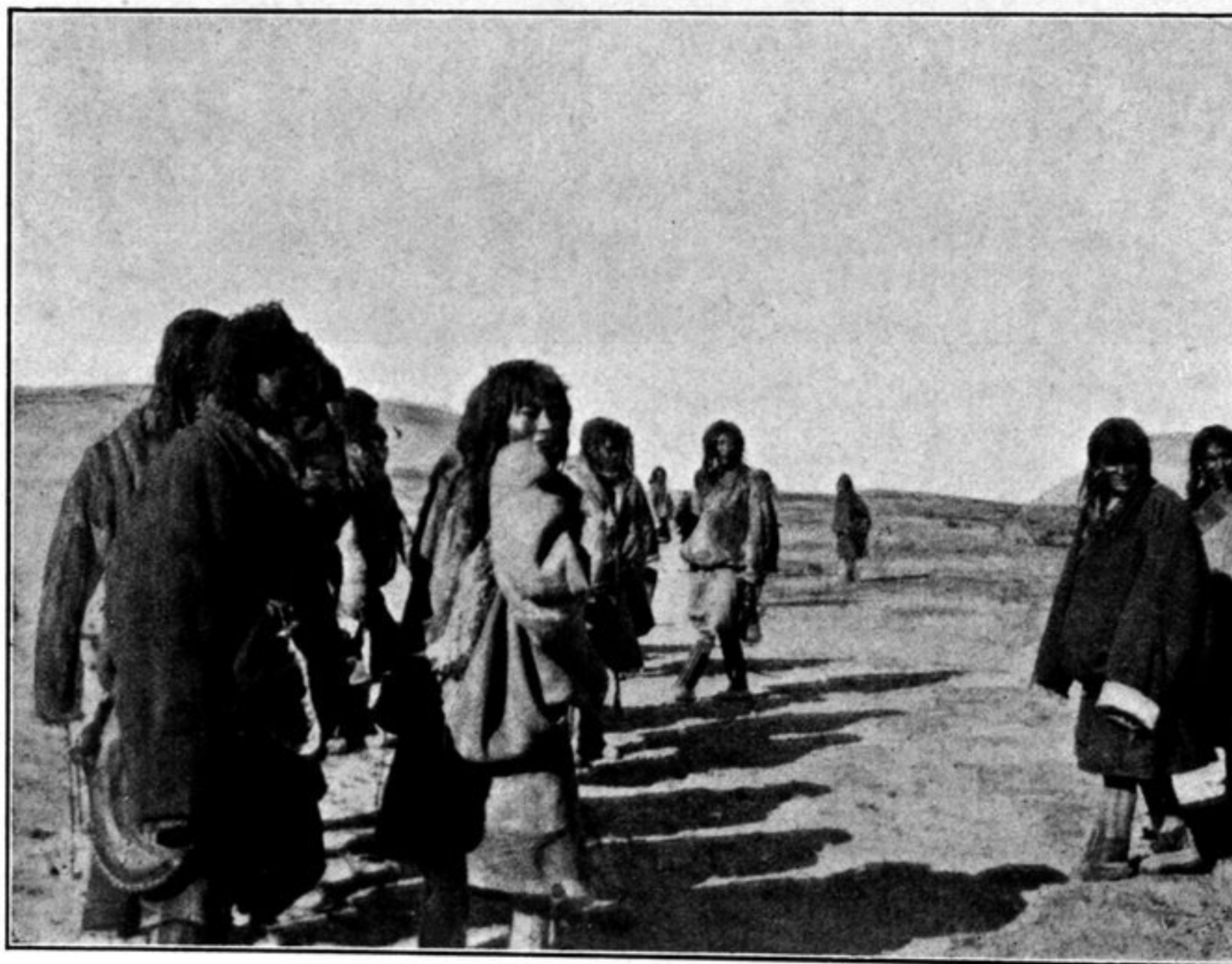


Fig. 20. TIBETANS AT JAGJU-RAPGA.

travelled, is reproduced in an accompanying illustration. In the extreme west is seen the nearer mountainous peninsula of the Jagju-rapga and in the extreme east the broad peninsula with the escarpment-range, which orographically may indeed be regarded as the continuation of the former.