

venient track; for although the ground is at the same time broken, and offsets and spurs jut out from the neighbouring mountains, I dare say there exist easy passes across them. In the S. 25° W. we observed a glen out of which issued a water-course running down into the lake.

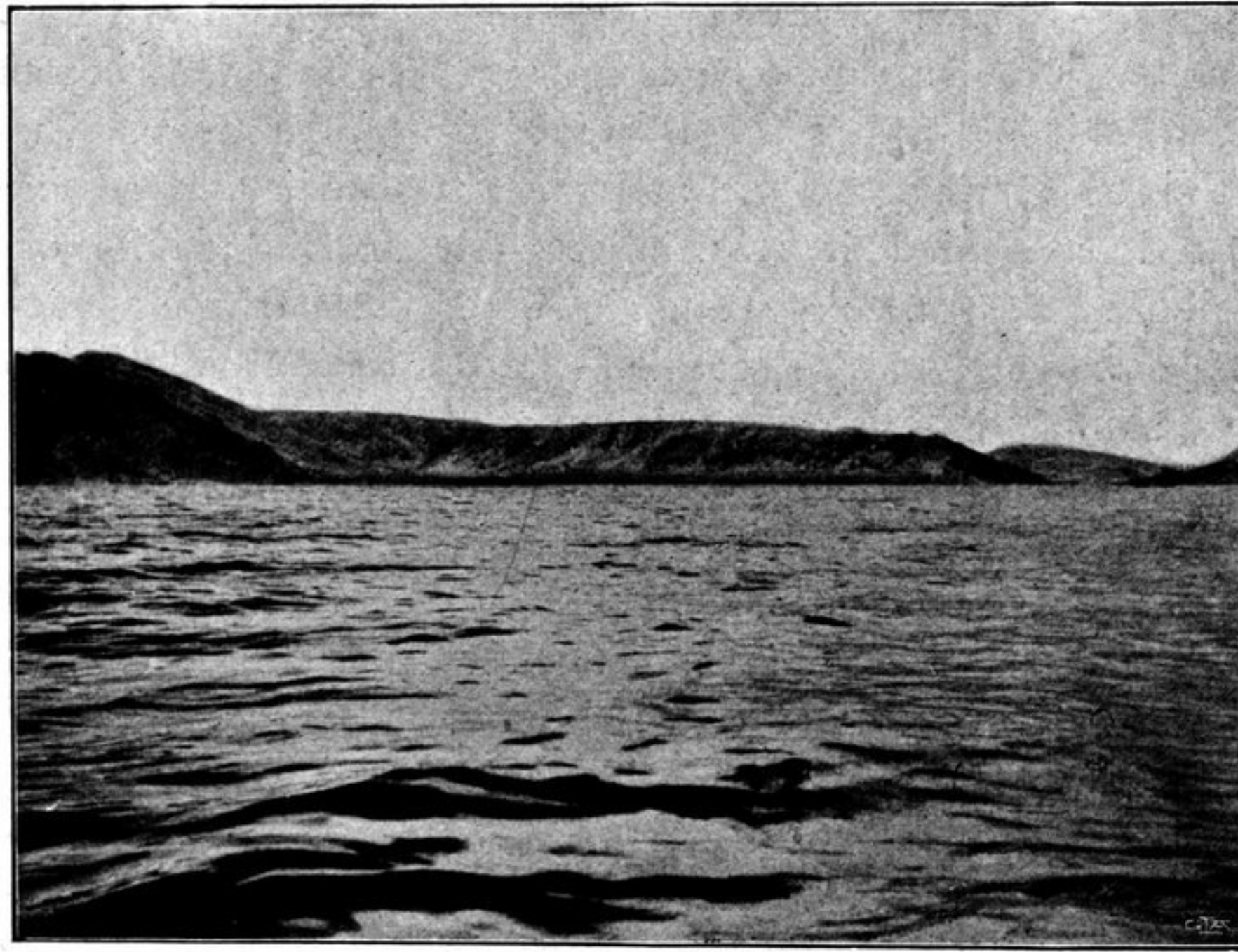
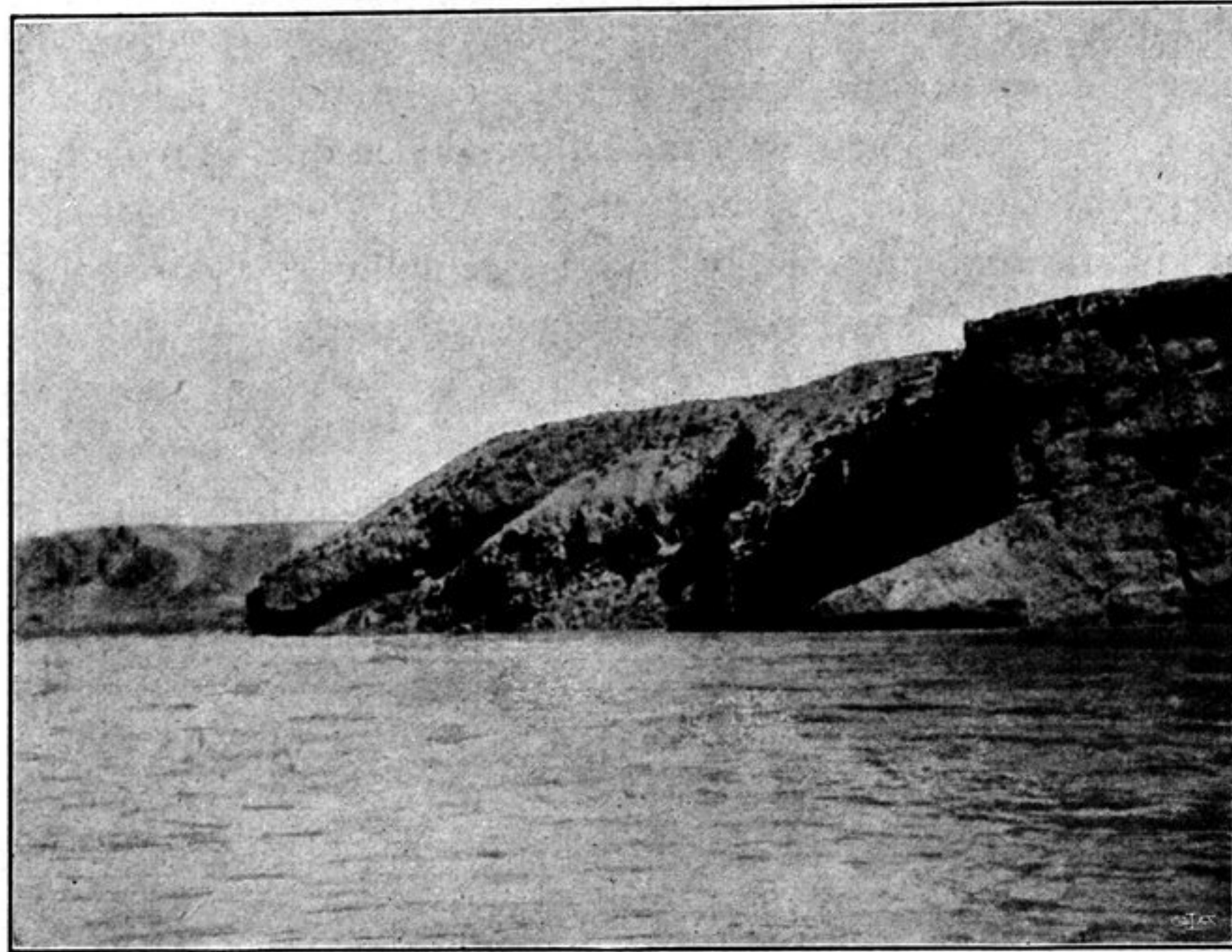


Fig. 37. VIEWS FROM THE NARROW PASSAGE IN THE NAKTSONG-TSO.

Camp LXXX was made on the shore of the large island in a very unusual sort of locality, in that there runs out from it into the lake a pier-like promontory, or tongue of land, a hundred meters long, with a mean breadth of 10 m., and lifting itself 1 m. above the surface of the lake. This is formed of the same fine