

sedimentary matter as the similar promontories already described; but in contradistinction to them this is grass-grown and possesses some small pools, which during the night became coated with a thin sheet of ice. The shore, from which the promontory projects, is cut off abruptly and reaches 1 m. in elevation, while

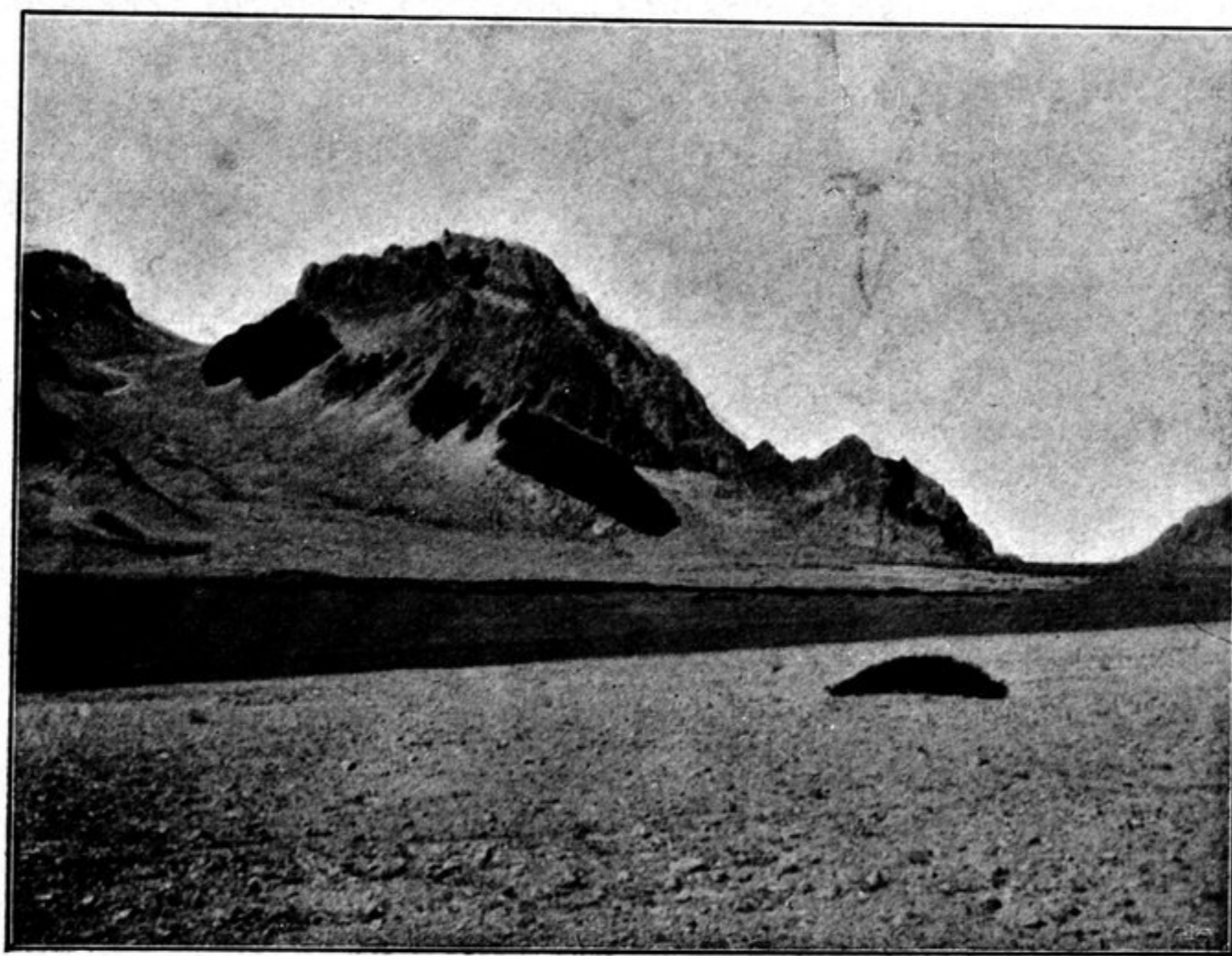
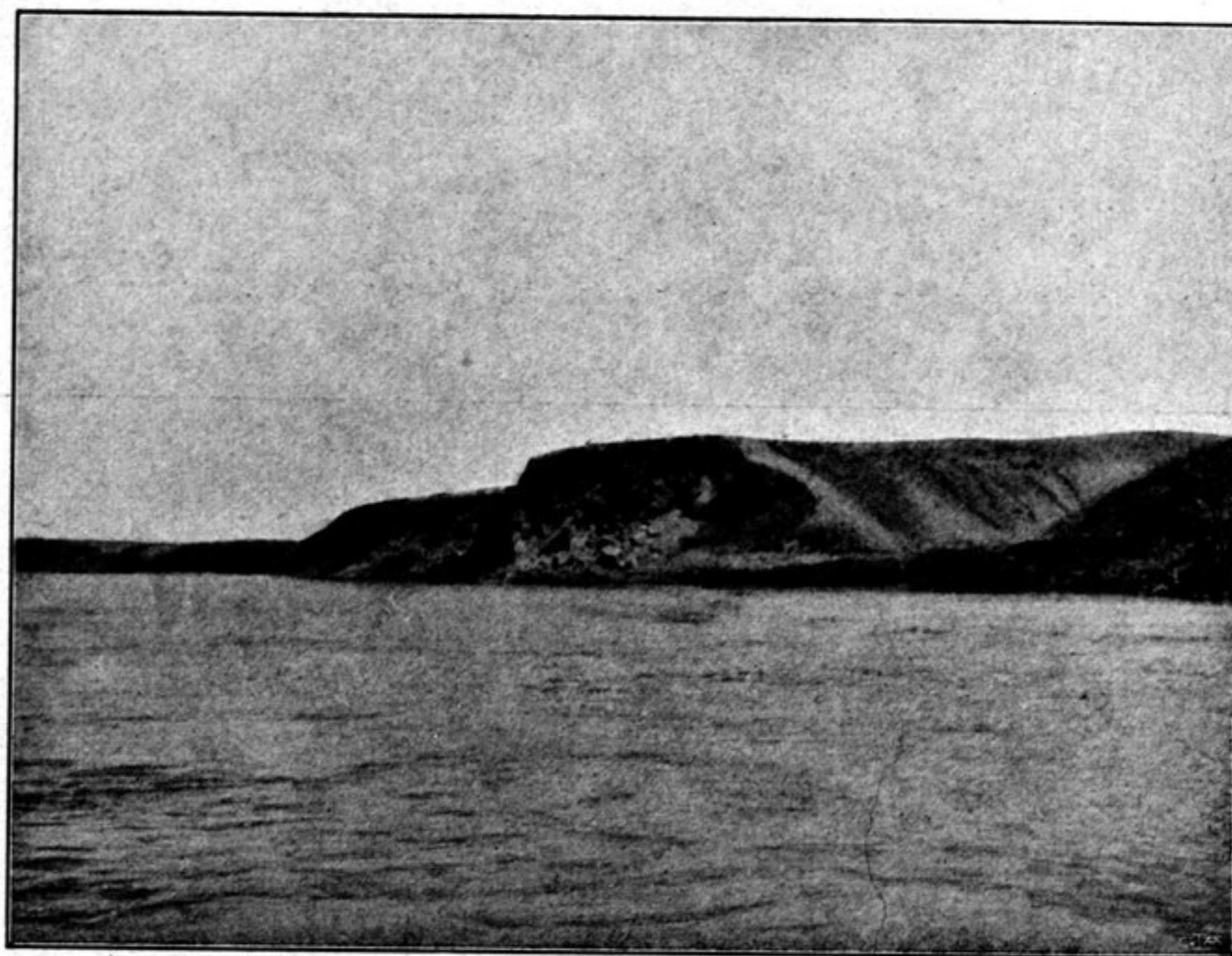


Fig. 38. VIEWS FROM THE NARROW PASSAGE IN THE NAKTSONG-TSO.

on the top it is covered with luxuriant grass. The promontory juts out from the shore at right angles and thus lies athwart the sound, which would be entirely blocked by it, were it not that close in at the foot of the perpendicular cliff on the opposite shore there is a sound of open water, 30 m. across and 1.3 m. deep,