

bottom rises here towards the west, the greatest depth occurring quite close to the larger island. The night was unusually mild: at 11 p. m. the temperature of the air was 8.4° and that of the lake $11^{\circ}.0$.

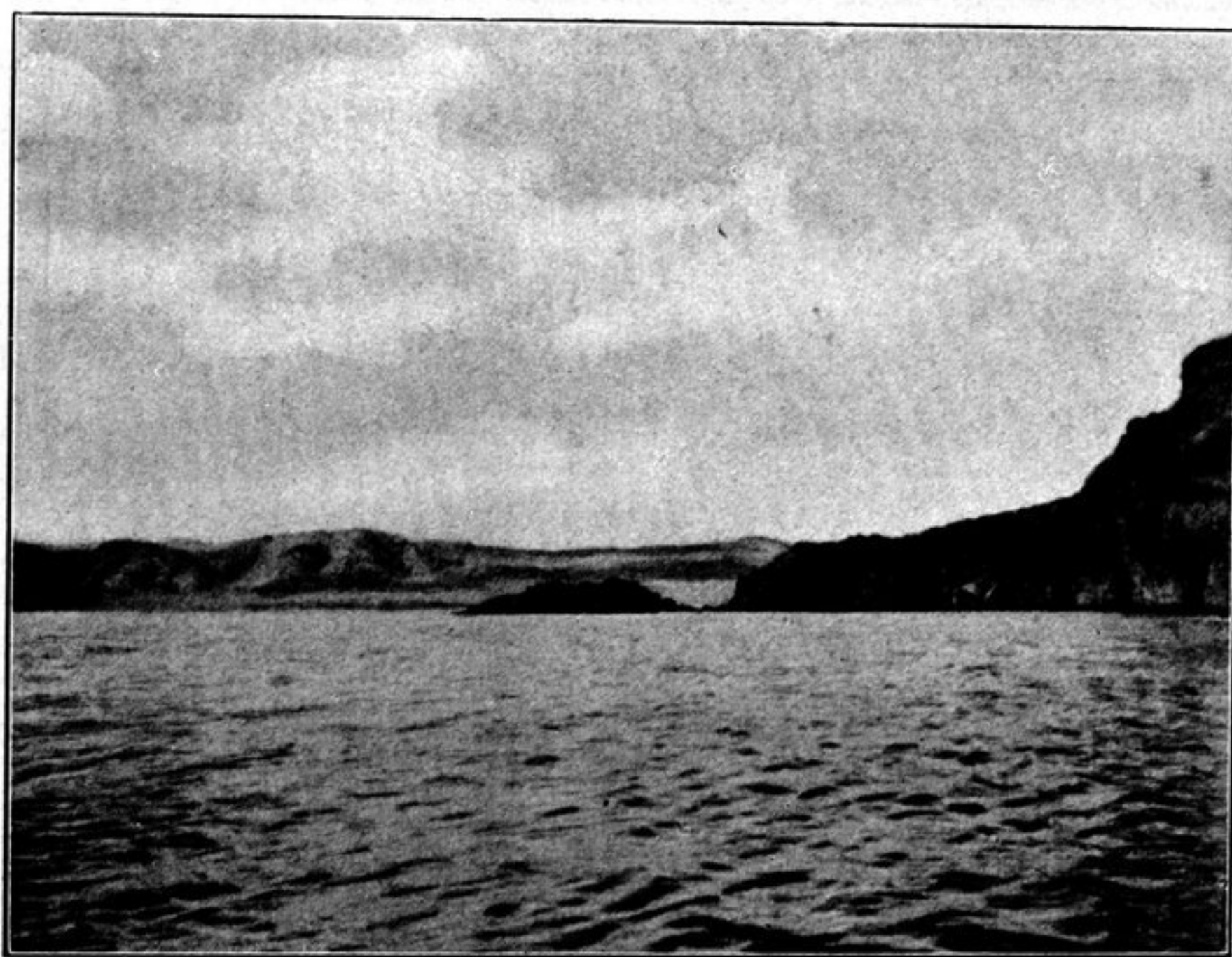
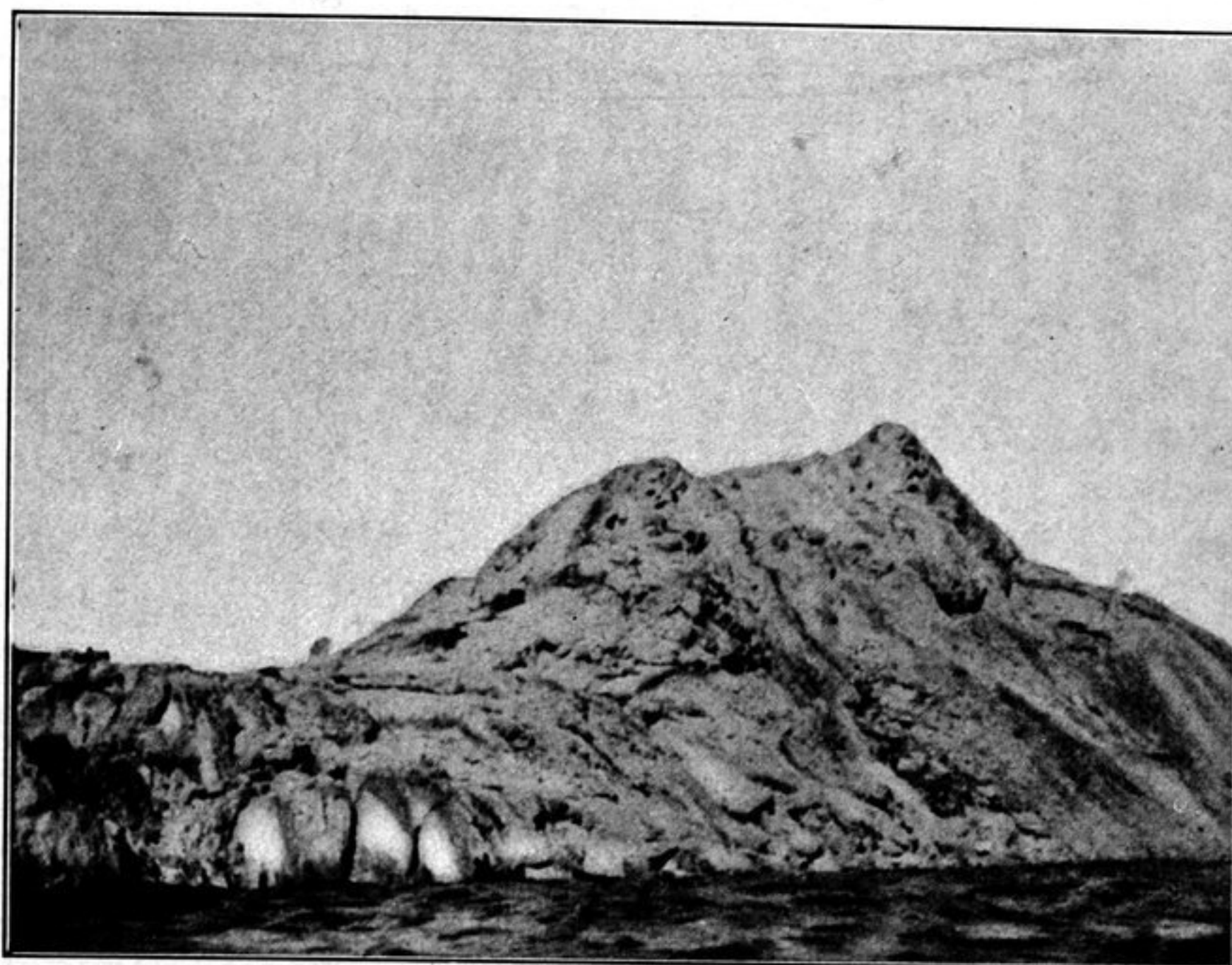


Fig. 51. VIEWS FROM THE SMALL ISLAND OF TSCHARGUT-TSO.

A violent westerly gale blew again on the 23rd September. The second island, on which we were detained prisoners against our will, is triangular in shape. Its eastern side, which stretches towards the $N. 20^{\circ} E.$, is 230 m. long; the western, stretching to the $N. 44^{\circ} E.$, is 340 m., and the southern, which stretches from east to west, is 320 m. long. Thus the island is very small. Its southern part is com-