

posed of a ridge of moderately coarse, beautiful red conglomerate, about 15 m. high and dipping 83° to the S. At its south-west end this ridge descends abruptly into the lake, while the shore of the island at its other extremity is littered with stones which have fallen from the summit and for the most part form a wall or

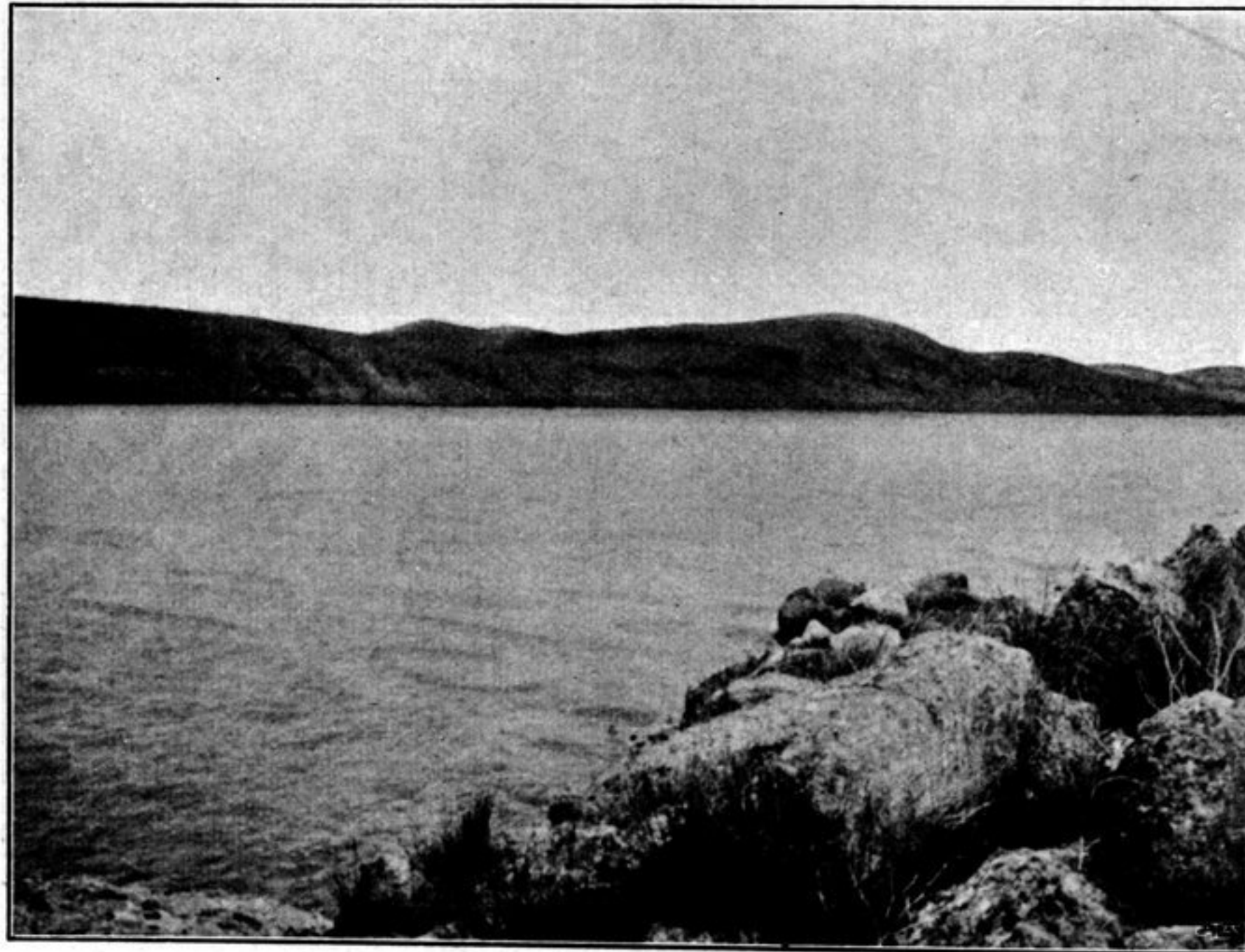
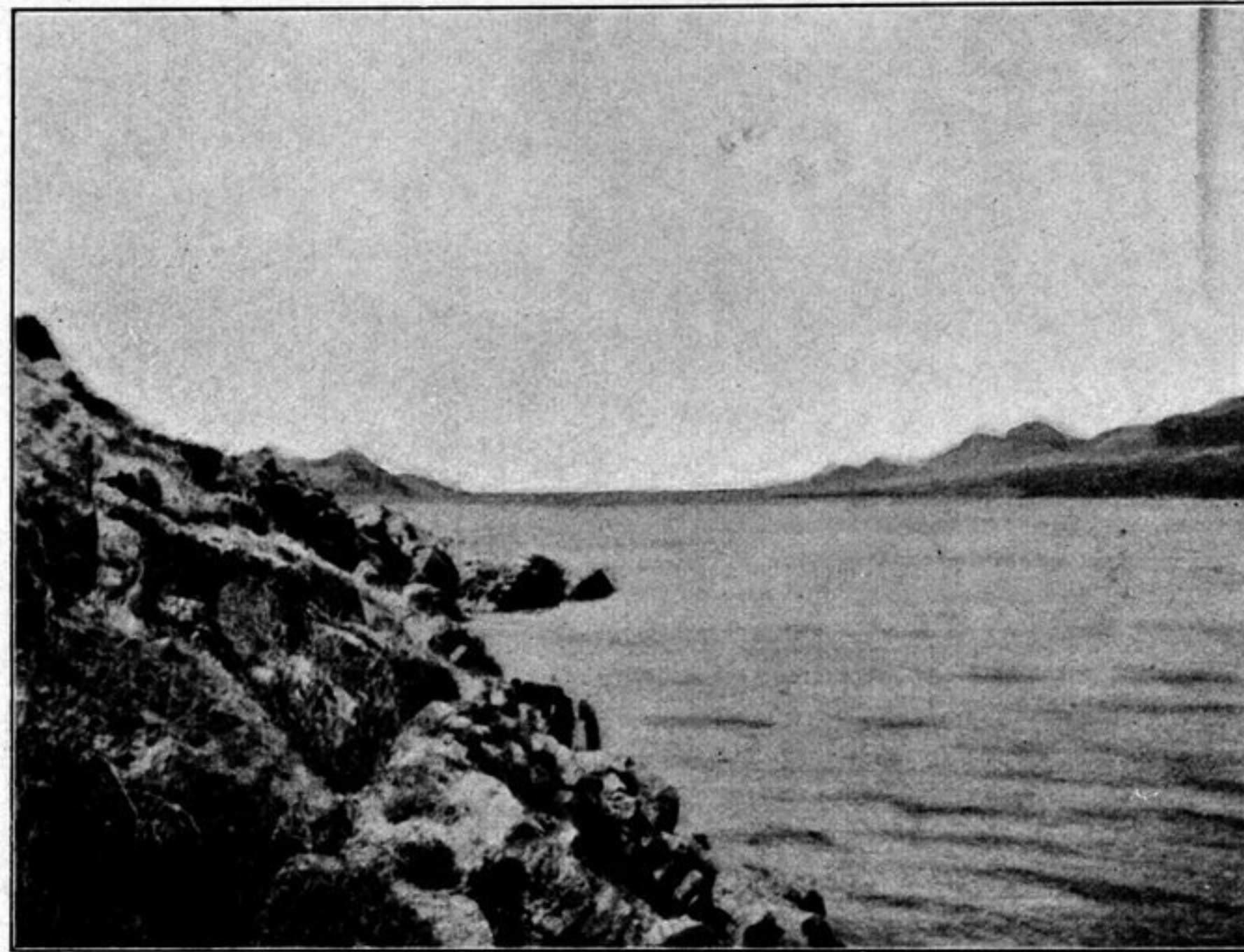


Fig. 52. VIEWS FROM THE SMALL ISLAND OF TSCHARGUT-TSO.

ridge a short distance back from the shore proper, giving rise in places to small strand-lagoons. The longest side, that facing north-west, also contains a number of similar fragments of stone, lying so thick together that we had some ado to get amongst them. The eastern side, on the contrary, consists of coarse