

sand and fine gravel, the latter beautifully polished and rounded. In the middle of the island the vegetation was relatively abundant and the grass good. This island too is visited in the winter, as was also evident from the cairns of stones built upon the conglomerate ridge. Along the shores a low rampart can generally be distin-

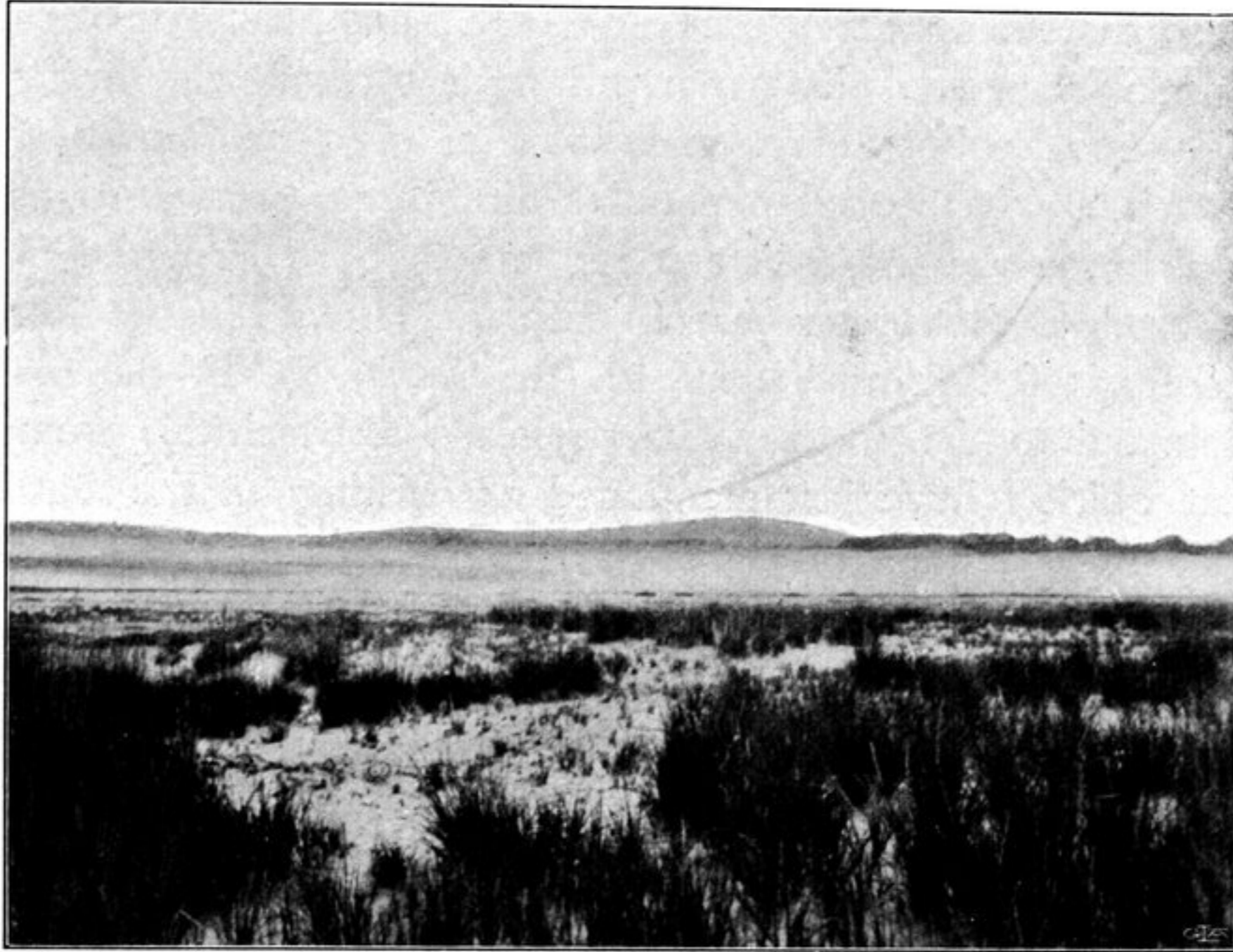


Fig. 53. VIEWS FROM THE SMALL ISLAND OF TSCHARGUT-TSO.

guished, and on the inner side of it was some water. From the north-east corner projects a cape littered with stones.

As the afternoon wore on, the sky became clouded, presenting an extraordinary spectacle; for we were able to watch the progress of the separate squalls as