

in my own immediate neighbourhood that I was able to plot any details; nevertheless I could see distinctly, that there are three ranges, all parallel to one another, and of these the one farthest south is the largest, and forms apparently the water-divide between the Bogtsang-tsangpo and a hydrographical region farther south, probably that of the Dangra-jum-tso and its neighbour lakes. That particular range, glimpses of which we caught at intervals through the openings of the side-glens, though at a considerable distance away, did not appear to have any breach in it; but the glens and watercourses which cut their way through the two parallel ranges to the north all originate in the loftier water-dividing range. It was one of these side-glens that now carried a little water, which no doubt issued from a spring in the vicinity. To these southern mountains our Tibetan escort applied the common name of Nangra.

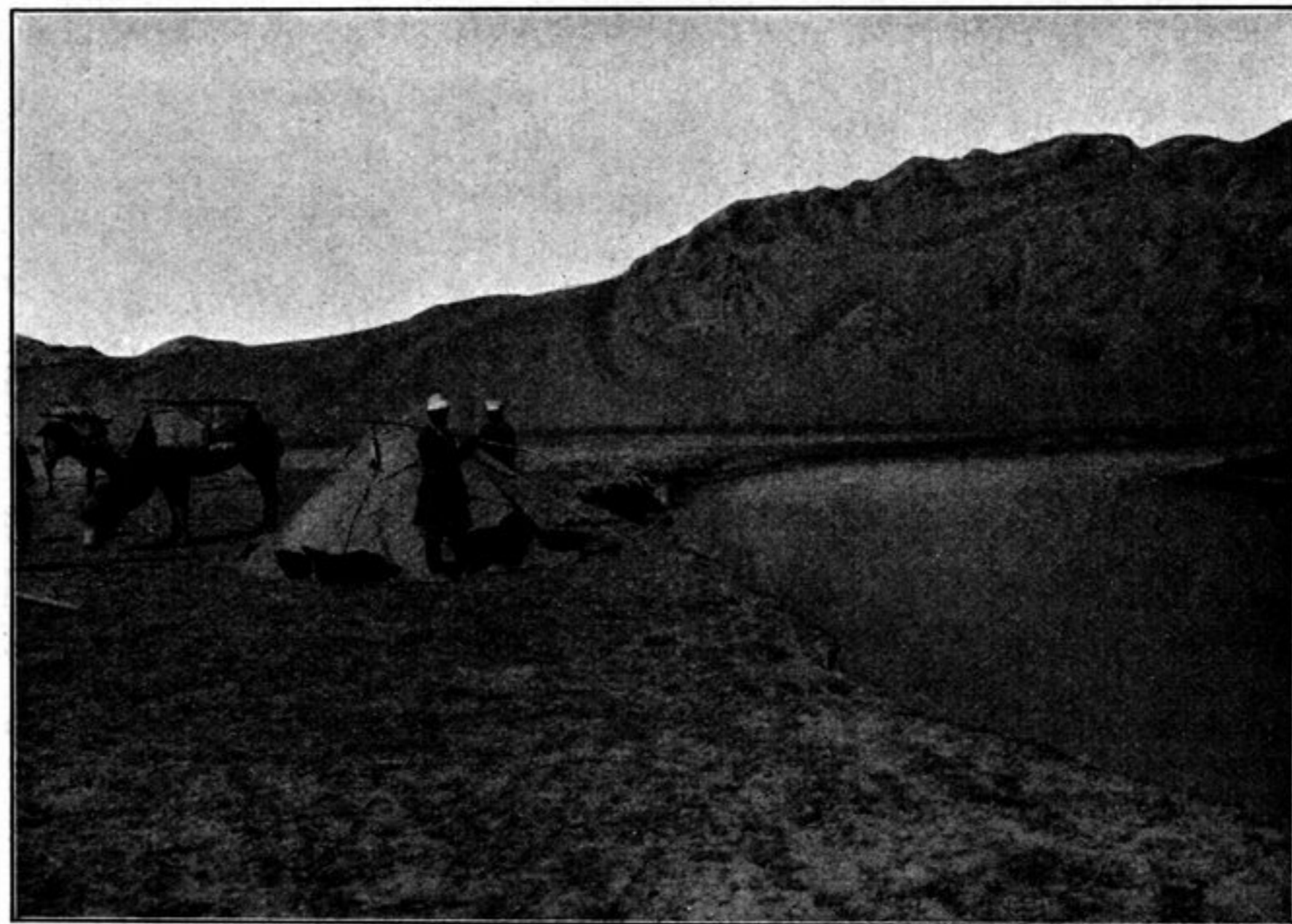


Fig. 66. THE BOGTSANG-TSANGPO AT CAMP XCIII.

Throughout this part of its course the river is very sinuous, and many of its windings appeared as if they would soon be cut off. The water was in general deep and dark-coloured, and the current was sluggish in the extreme; it was only rarely, when it came to shallow places, that the current was at all lively. In a gap in the nearest range on the north there is a low and convenient pass, giving access to the next latitudinal valley in that direction. Through this breach also we observed fresh mountains farther to the north, probably belonging to the range that borders Littledale's valley on the north.

Our third camp beside the Bogtsang-tsangpo was Camp XCIII (alt. 4644 m.). At that point the river came from the north-west, after making a sweep to the north round a couple of small free-standing ridges. It then makes its way by several sharp windings along the foot of the range that shuts in the valley on the north. Here that range terminated; or rather was broken by a spur, at the foot of which stood a couple of nomad tents. Beside our camp were one or two small