

in the second. A similar measurement made at Camp XCII gave a volume of 4.01 cub.m. Probably the river really does lose volume somewhat along this stretch, because it is not joined by any tributaries; but below the last camp it undoubtedly increases, in consequence of accessions from springs, and possibly from affluents that reach it from the main range in the south.

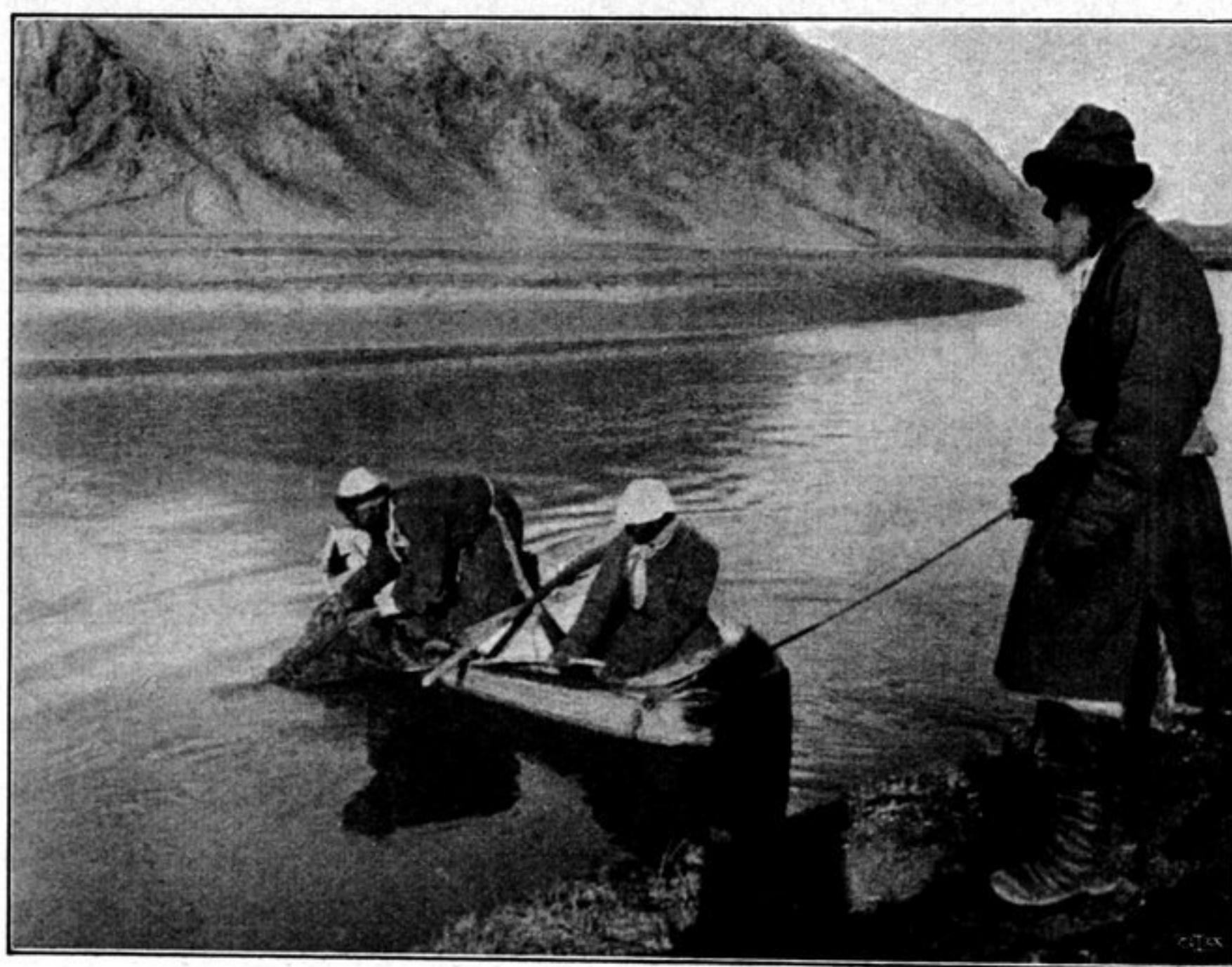


Fig. 68. FISHING AT CAMP XCIII.

October 2nd. We still continued to travel towards the west-south-west, and during the greater part of the day we had the Bogtsang-tsangpo to the north. Thus here again there occurs a double breach, but this time in the northern range,