

we saw before and as those which we encountered afterwards. Grass grows, though excessively thinly, on the gypsum area.

The Oman-tso once constituted a south-westerly bay of the Dadap-tso, but is now completely cut off from it. Of the former connection there still remain traces

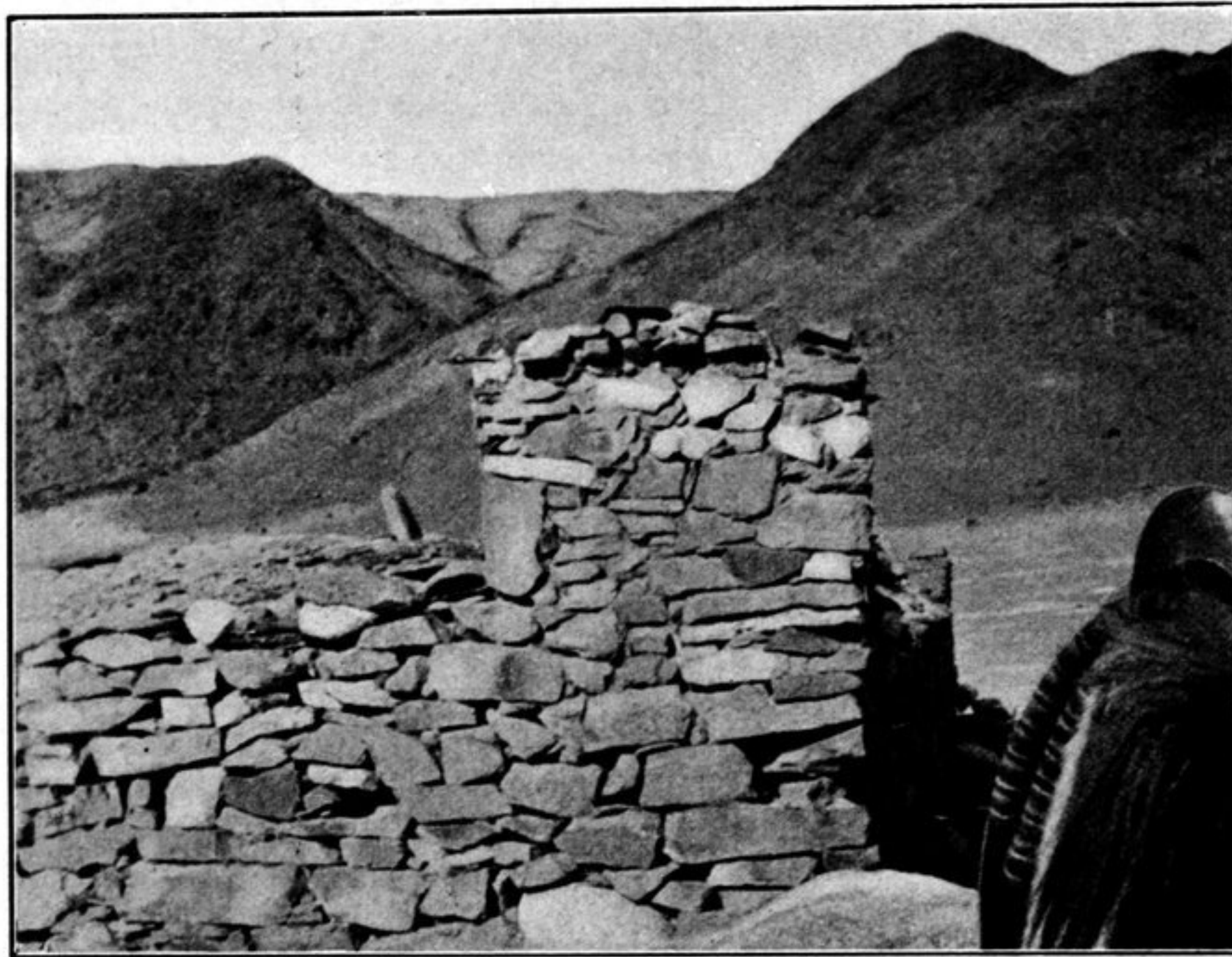


Fig. III. TWO OBOS NEAR LEH, LADAK.

in the shape of one large lagoon and two small ones, all very shallow, on the isthmus. These are situated quite close to the northern shore of the lake, but have no connection with it; they are doomed to a speedy disappearance. The strip of land between them and the principal lake is very narrow and lies only a shade above