

The range consisted here of some sort of severely weathered greenstone, with an indeterminate dip; on the south side it appeared to go down steeply towards the south, and on the northern side towards the north-west.

From the top of this separated portion of the range, to the north-west of our camp, we obtained an excellent view of the northern latitudinal valley. It is bounded on the north by several parallel ranges, none of them very high; it was in one of these that we saw the little snowy peak which I have just mentioned. Across the Detsche-tso we had an uninterrupted view. It is not so very small; and we were able to make out distinctly varying shades of colour in the concentric rings round its existing shores, an indication of its continuous shrinkage. To the north-east we caught, through openings in the mountains, glimpses of several white expanses, pretty certainly the bottoms of dried up lakes.

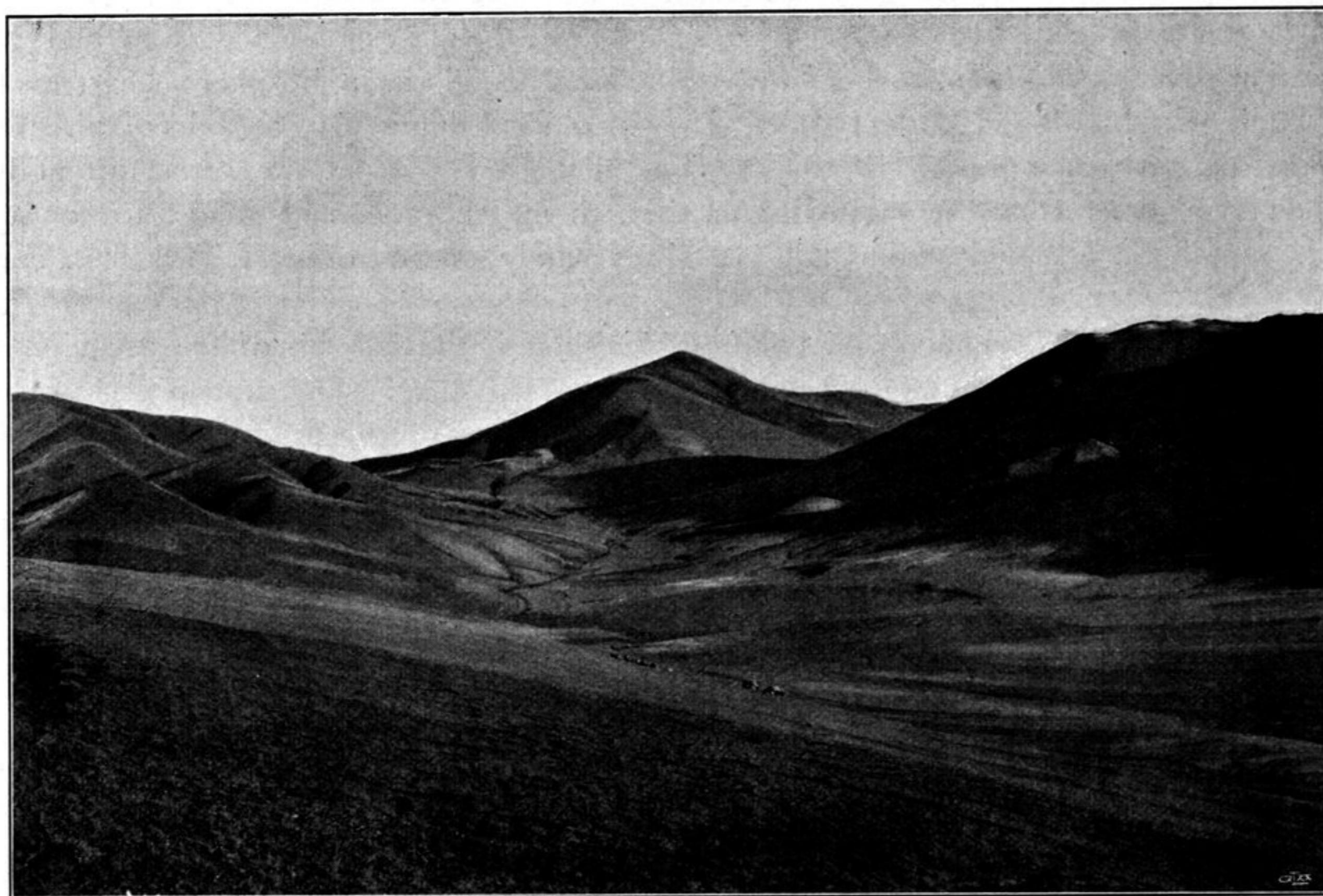


Fig. 123. HILLS AROUND CAMP CXXI.

On the 7th November, as on the days preceding, we enjoyed good weather, excellent weather, with a very gentle wind; in fact at noon we felt it uncomfortably warm when exposed to the direct rays of the sun. All day long, and we covered 22 km., we did not come across a single drop of fresh water, nor did we see either tents, or flocks, or herds, though once or twice we did observe signs of old encampments.

When we started again we proceeded first towards the west-north-west, until we reached a flat pass, quite close to our camp and only a few meters above it. North