

them of great size and with thick stems. According to our Tibetans, the privilege of using this scrub is reserved for the adjacent temple village, and we saw stacks of it piled up to dry on the roofs of several houses in Noh.

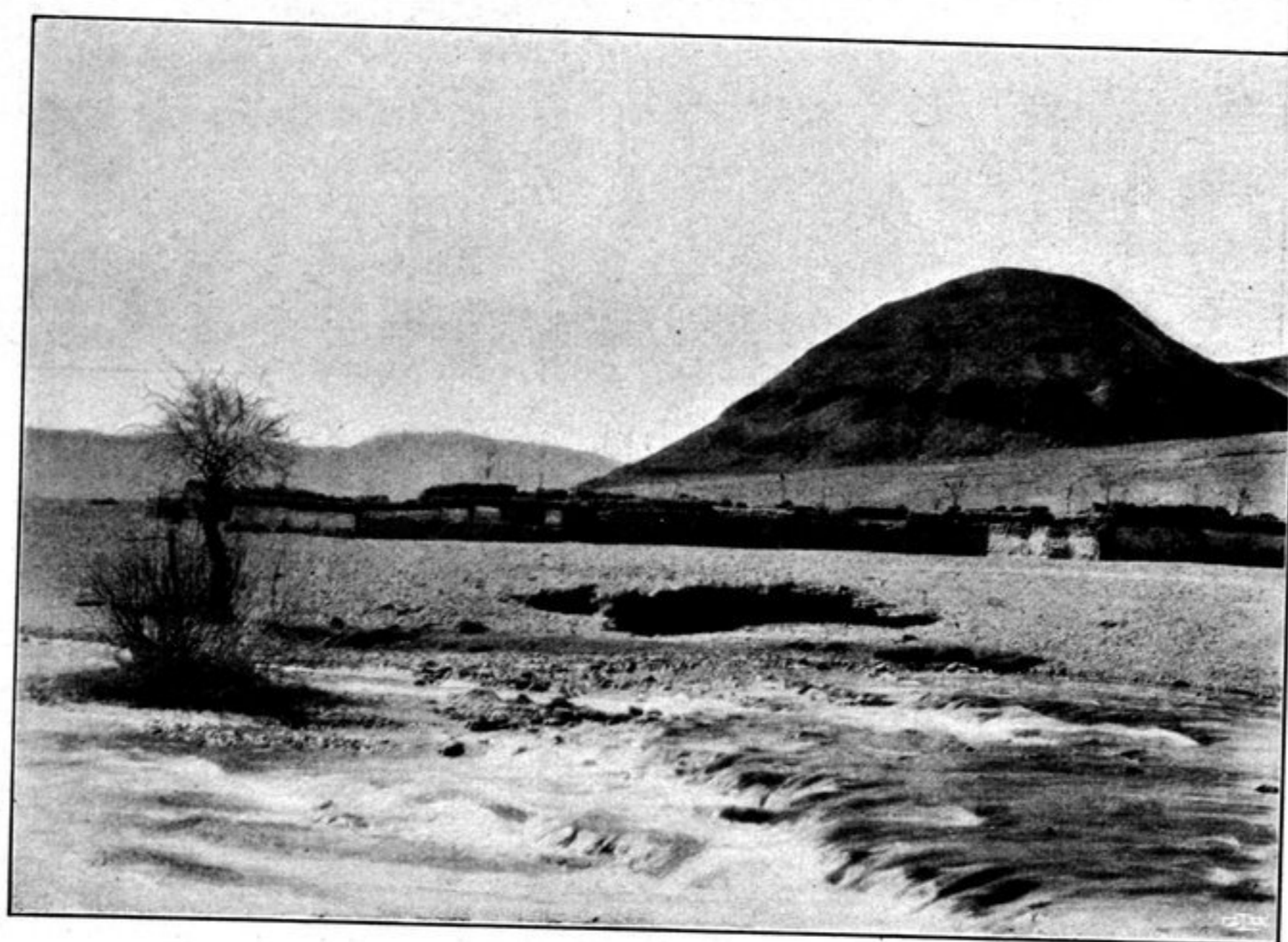
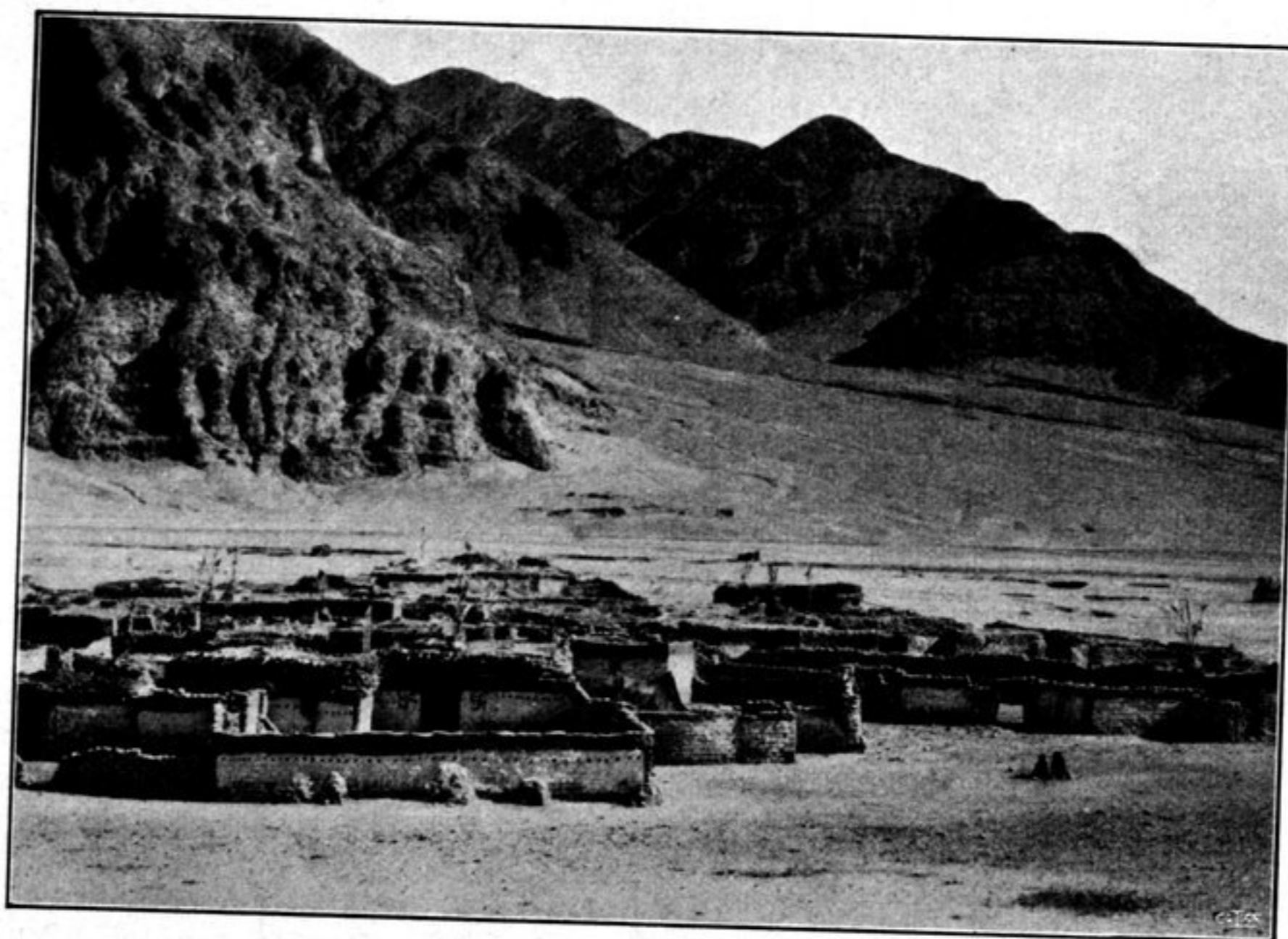


Fig. 163. VIEWS OF THE VILLAGE OF NOH.

Both valley and river wheel at right angles round the big bluff just spoken of and then run south, debouching upon an unusually open country, namely the flat depression in which the lakes of Tso-ngombo are situated. The last transverse glens of the northern range join the valley just at the elbow, and the last spurs and gravelly screes of the same range approach the bank of the river so closely that there was barely room for the camels to get past. At one point we crossed over an offshoot of the gravel-and-shingle terrace, the foot of which is washed by the