

also other beach-lines or rather terraces; but they belong to an older period, when the lakes were larger in consequence of a more abundant inflow of water. At one place only did we observe a few blades of grass growing close in beside the shore; though very near to them were some smaller sand-hills, held together by short, hard

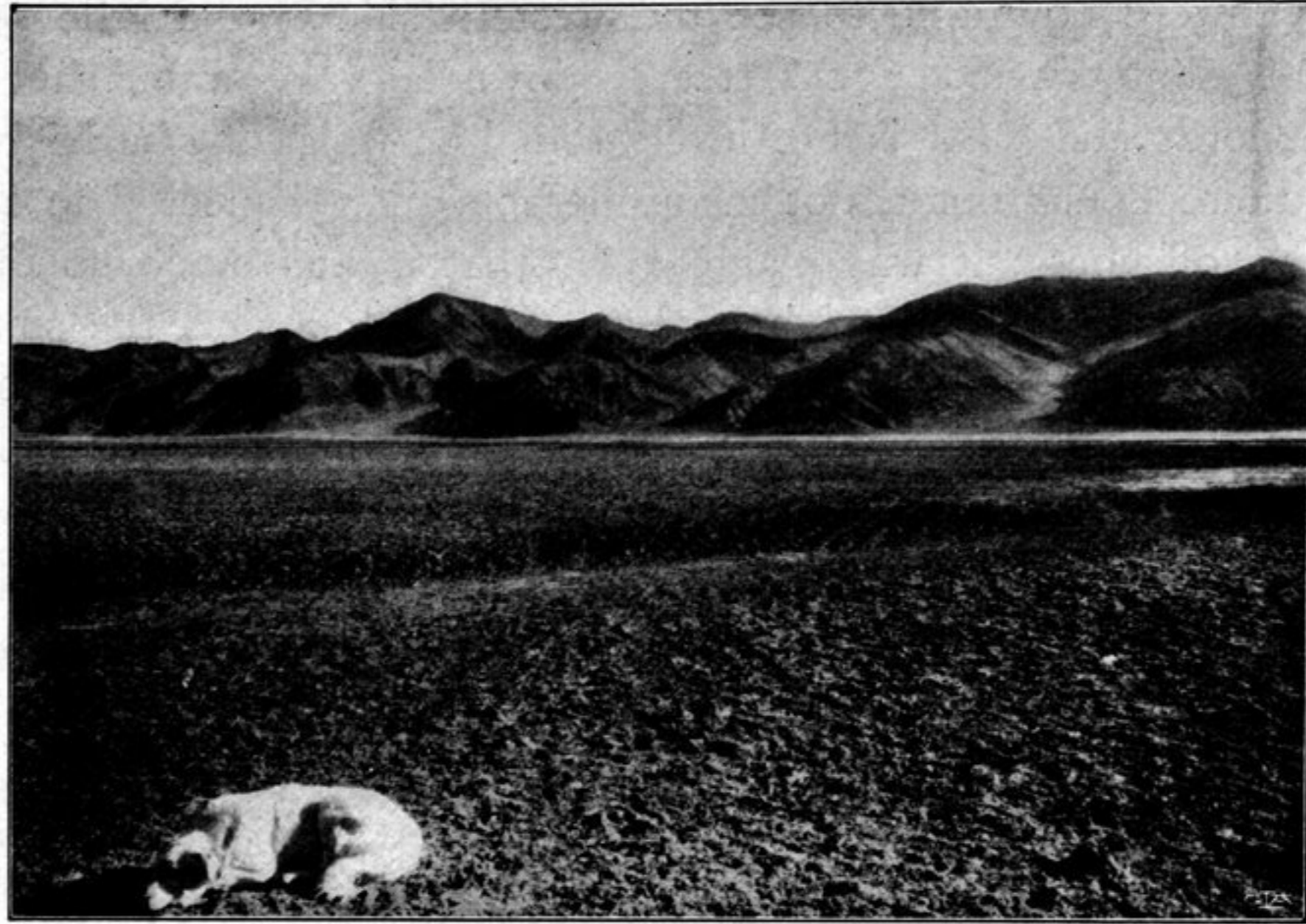


Fig. 171. LOOKING WEST FROM CAMP CXXXIX.



Fig. 172. LOOKING NORTH FROM CAMP CXXXIX.

grass. This section of the river was also perfectly free from ice, and emptied into a third independent lake-basin, which on the contrary was almost entirely frozen over, except for a few open strips of water in the middle, probably due to the current from above.