

south, the other from the south-west. At its outlet is a gigantic gravelly scree. Over against this glen we, on the other side of the lake, entered a more open locality, having to the north-west a dominating peak at the head of a large valley.

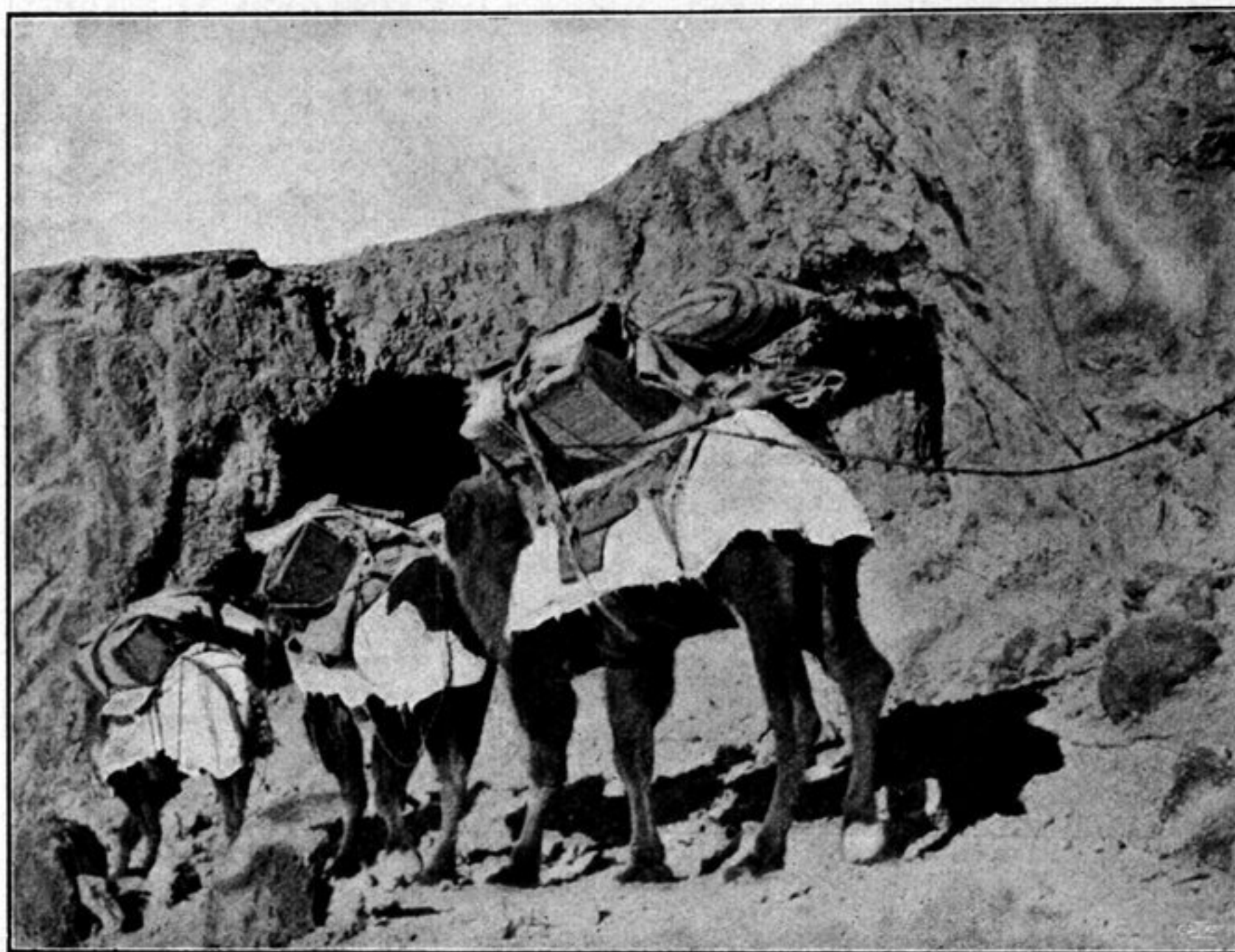


Fig. 174. GROTTOS ON THE SHORE OF PANGGONG-TSO.

The river next enters a tiny basin, at that time entirely frozen over, and after that a larger basin, bigger than any of those it had hitherto passed through, and extending a long distance to the west and north-west. This, the fifth basin, was not frozen, but under the crisp breeze its dark green waters were curling in white foam-tipped waves. Its eastern shore, especially where the lake is narrowest, was