

Fig. 180. STEEP SHORE OF EASTERN TSO-NGOMBO.

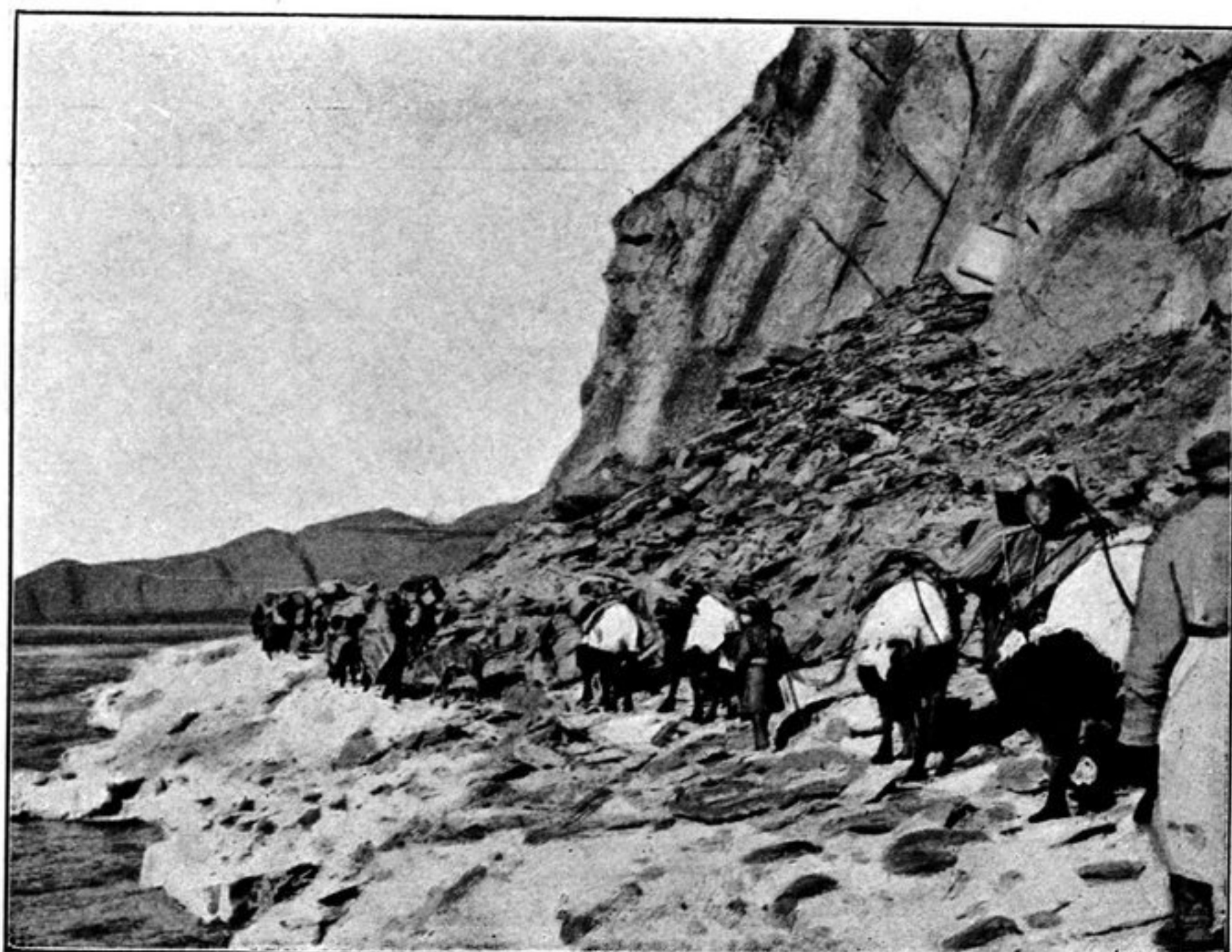


Fig. 181. NORTHERN SHORE OF TSO-NGOMBO.

The cliffs on the northern side then recede a little and nowhere reach all the way to the shore. The level strand afforded excellent ground for marching on, the surface consisting for the most part of fine dust, with a sprinkling of vegetation; the dust rose in clouds in the track of the caravan. On the shore stood a solitary Tibetan tent, the inhabitants of which clearly intended to remain some time longer, to judge from the big stacks of fuel (wood) built up round the camp and obviously intended for winter use. A flock of sheep was grazing on the thick, though then