

hard and withered grass. In the N. 30° W. was the wide outlet of a fairly big glen, which is joined by several subsidiary glens from both sides. Occasionally we would meet on the northern track a caravan of sheep, laden with corn put up in small sacks, and travelling from Leh or Tanksi. One that we met this day consisted of

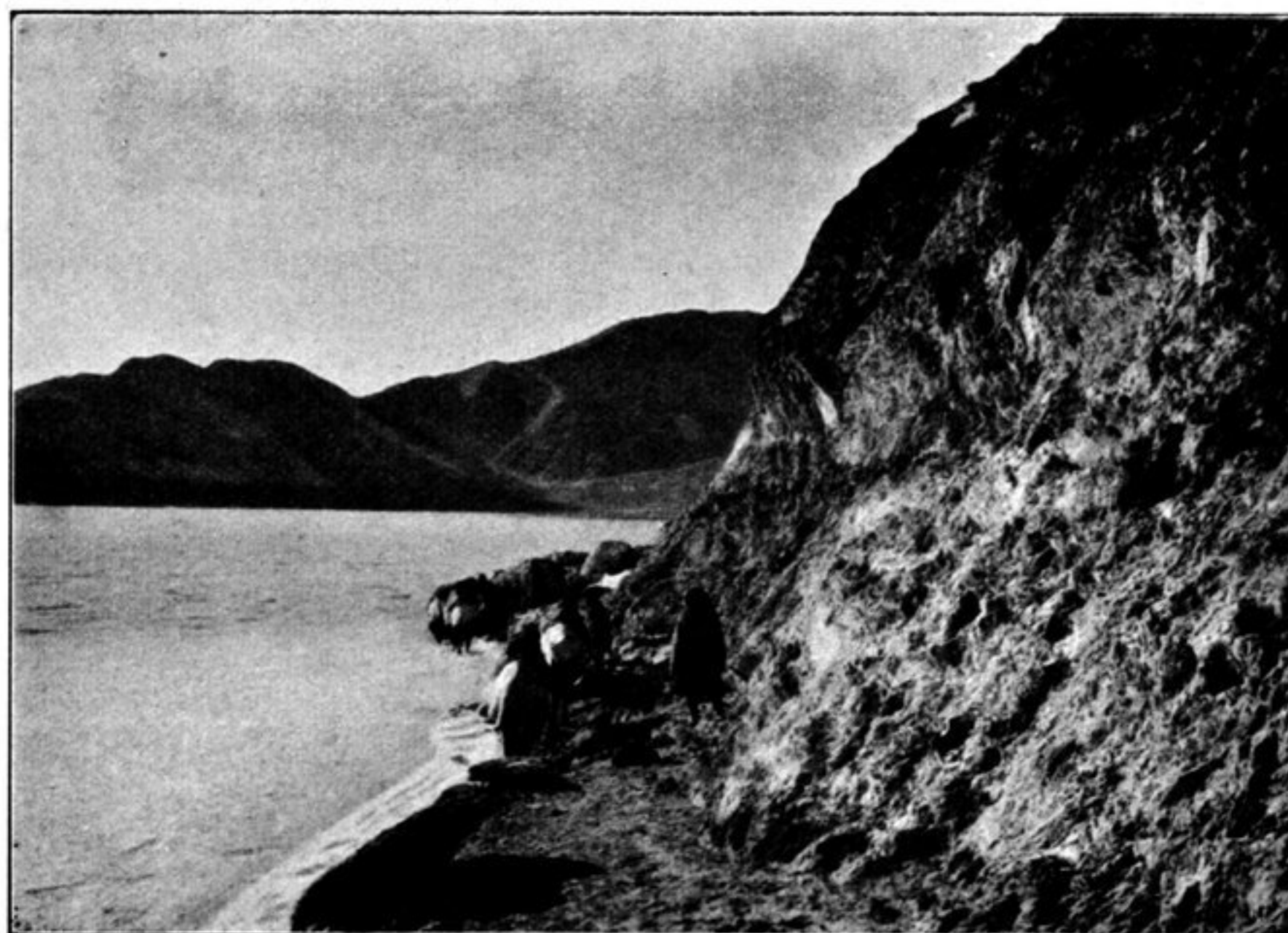
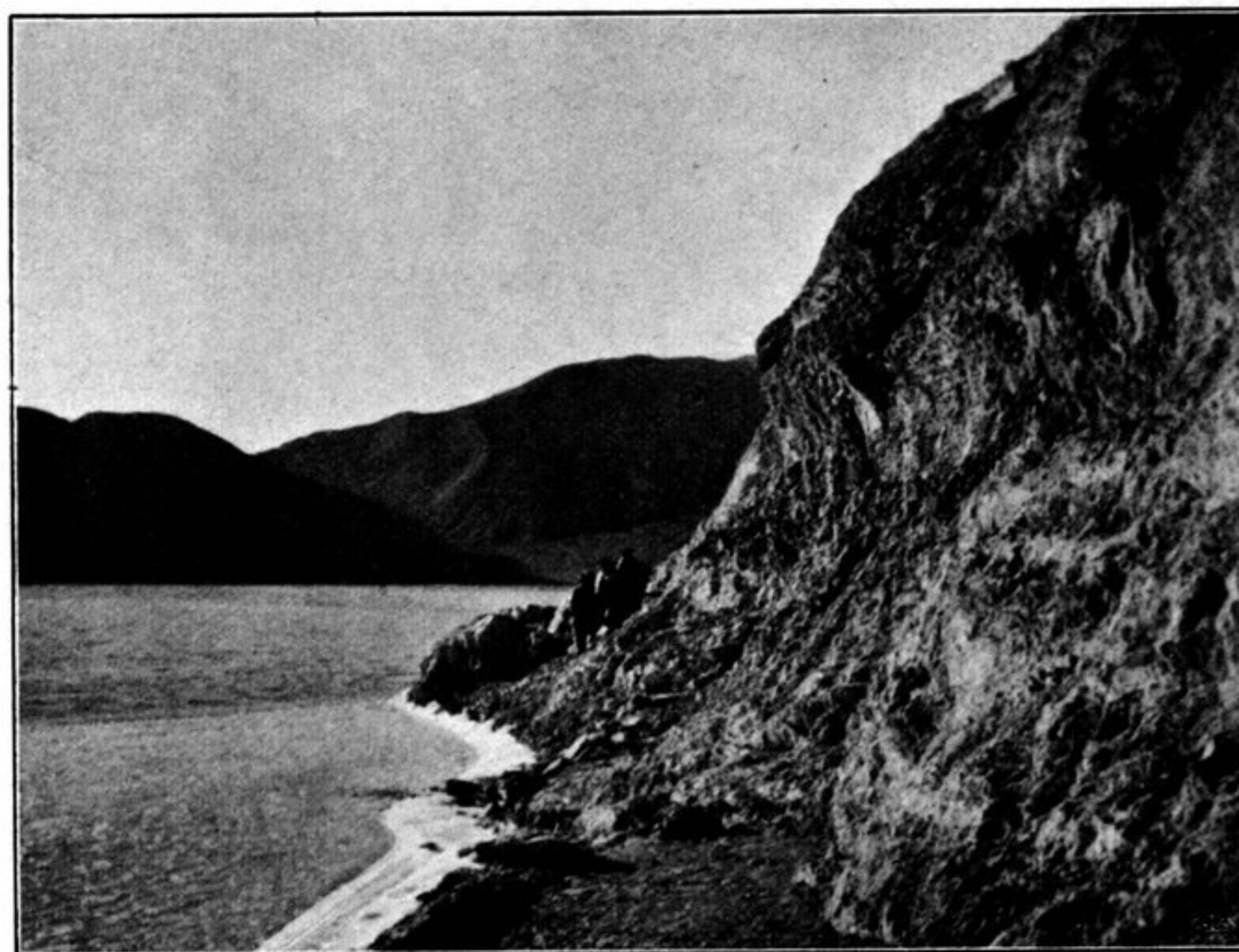


Fig. 182. THE DIFFICULT PASSAGE OF DECEMBER 1ST.

200 sheep: it was quite a pleasure to see how well-trained the animals were, and how orderly they marched along without being especially looked after. Just after passing a little patch of balghun bushes we formed Camp CXL. At this point the lake was barely a kilometer in breadth. In the S. 36° E. we observed a conspicu-