

date, I have no doubt, from a somewhat earlier period, the lowest belong to the present time. If we suppose the surface of the lake to drop a stage further, similar small ramparts would once more be formed next to the new shore. Ramparts of this description were very common during the day's march, both on the promontories

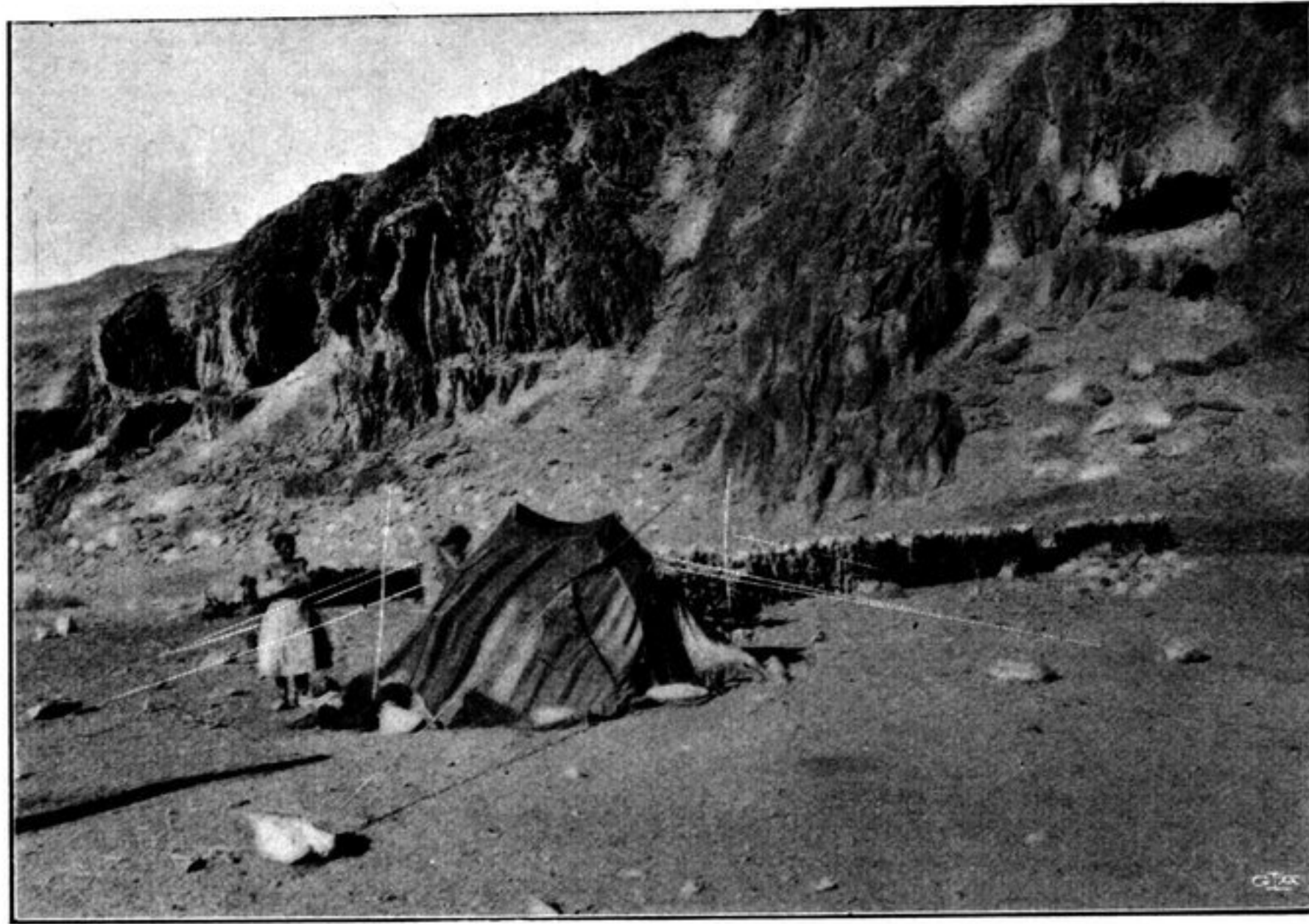


Fig. 189. TIBETAN TENT AT CAMP CXLI.

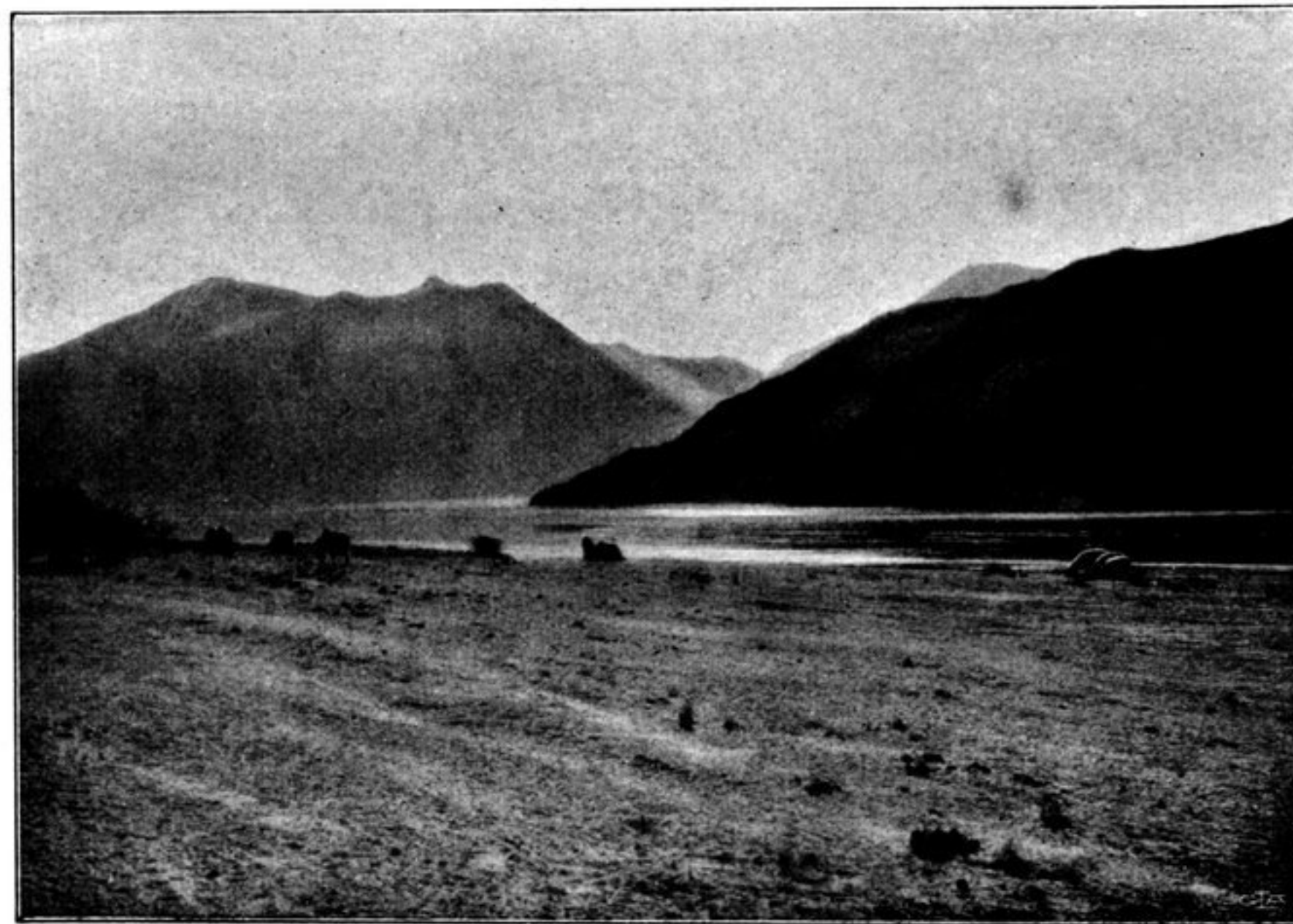


Fig. 190. FROM THE NEIGHBOURHOOD OF CAMP CXLI.

and round the bays. After that came a large promontory, consisting virtually of perfectly level, sandy ground, with a couple of beds of excellent kamisch growing on it. The strip of beach now became wider than it had been before. In the south-south-west we perceived a larger bay, with an especially big pyramidal peak at