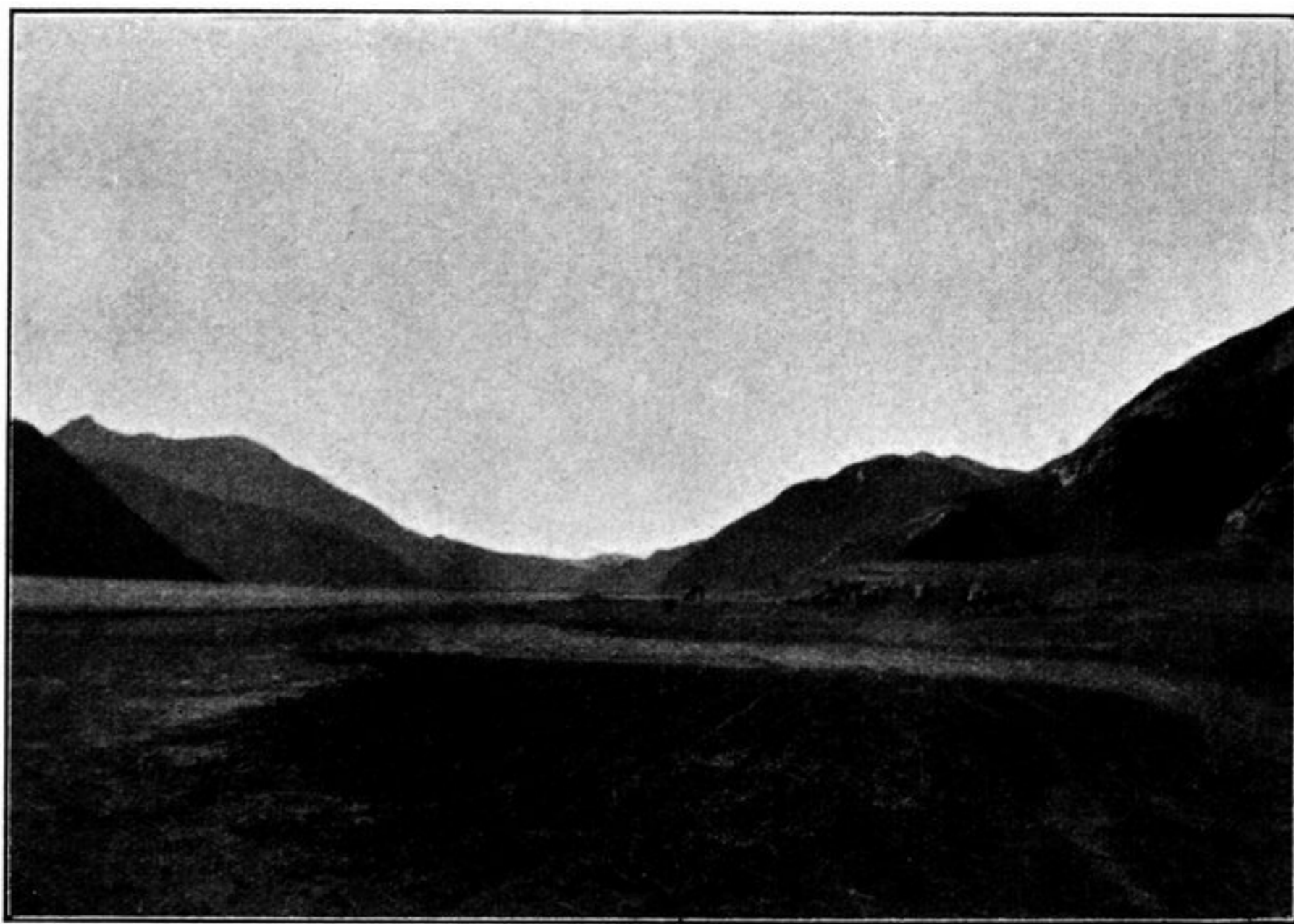


Fig. 191. LOOKING S 32° E FROM CAMP CXLI.



192. LOOKING WEST ACROSS THE LAKE FROM CAMP CXLI.

the head of it, though it was soon screened again by nearer mountain-masses. Upon this bay debouches a big glen from the south.

During the latter part of the day's march the ground was especially favourable, consisting of soft earth, with kamisch, grass, japkak, and balghun bushes growing on it at intervals. Such localities as this show clearly that there is a fairly lively traffic between Ladak and Noh; the road is made up of quite a number of parallel tracks, pretty deeply trodden. Across the gravelly scree the track disappears almost entirely amongst the stones. At Camp CXLI we found a sheep caravan already encamped. The sheep were grazing along the shore. Their three