

The shore of the lake still continued to sweep westwards with the usual gently undulating outline, though in this part there are no rocky headlands to impede one's march. The eastern side of the peninsula just mentioned runs in a straight line towards the south. The surface was sandy and earthy, and overgrown with grass,

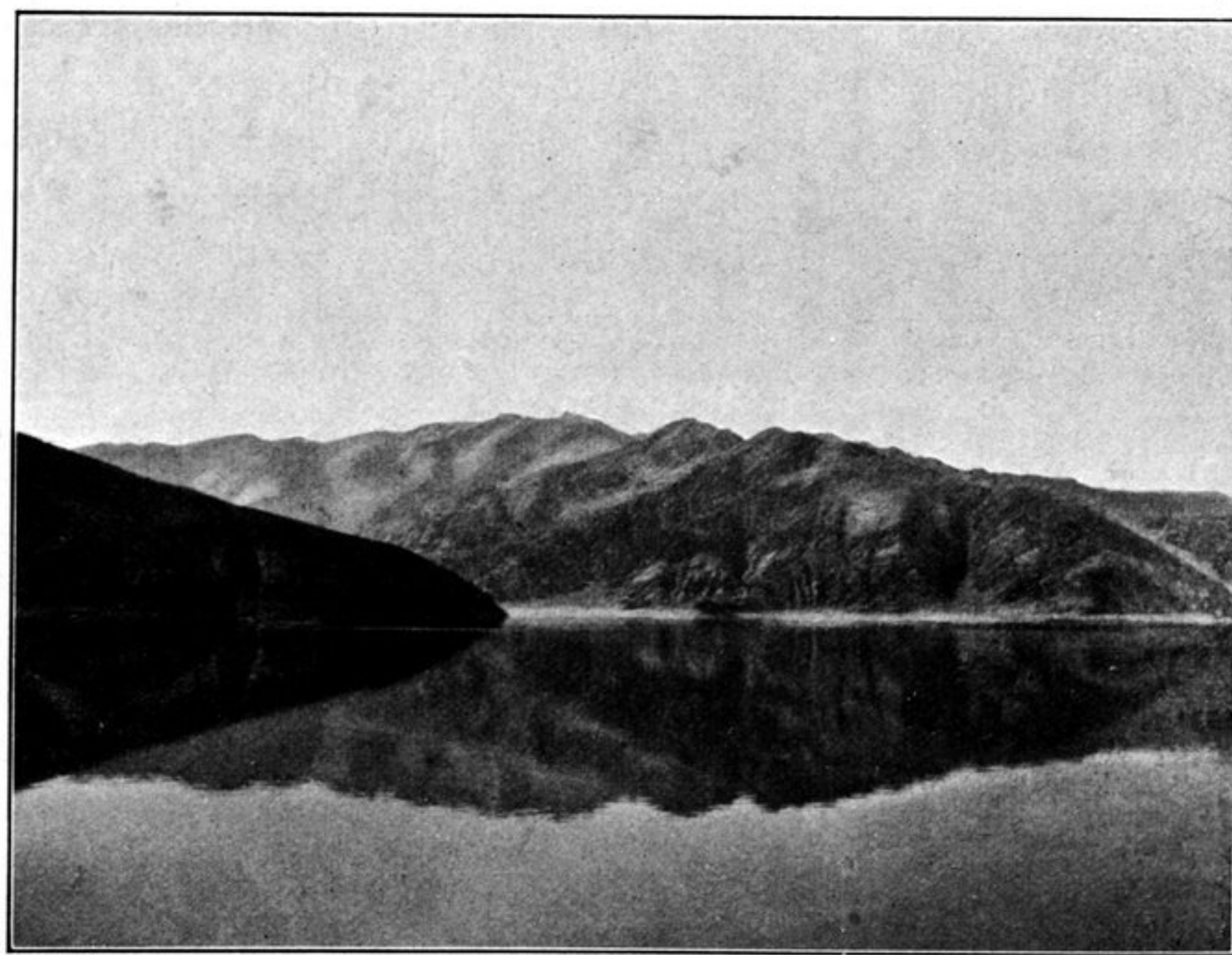
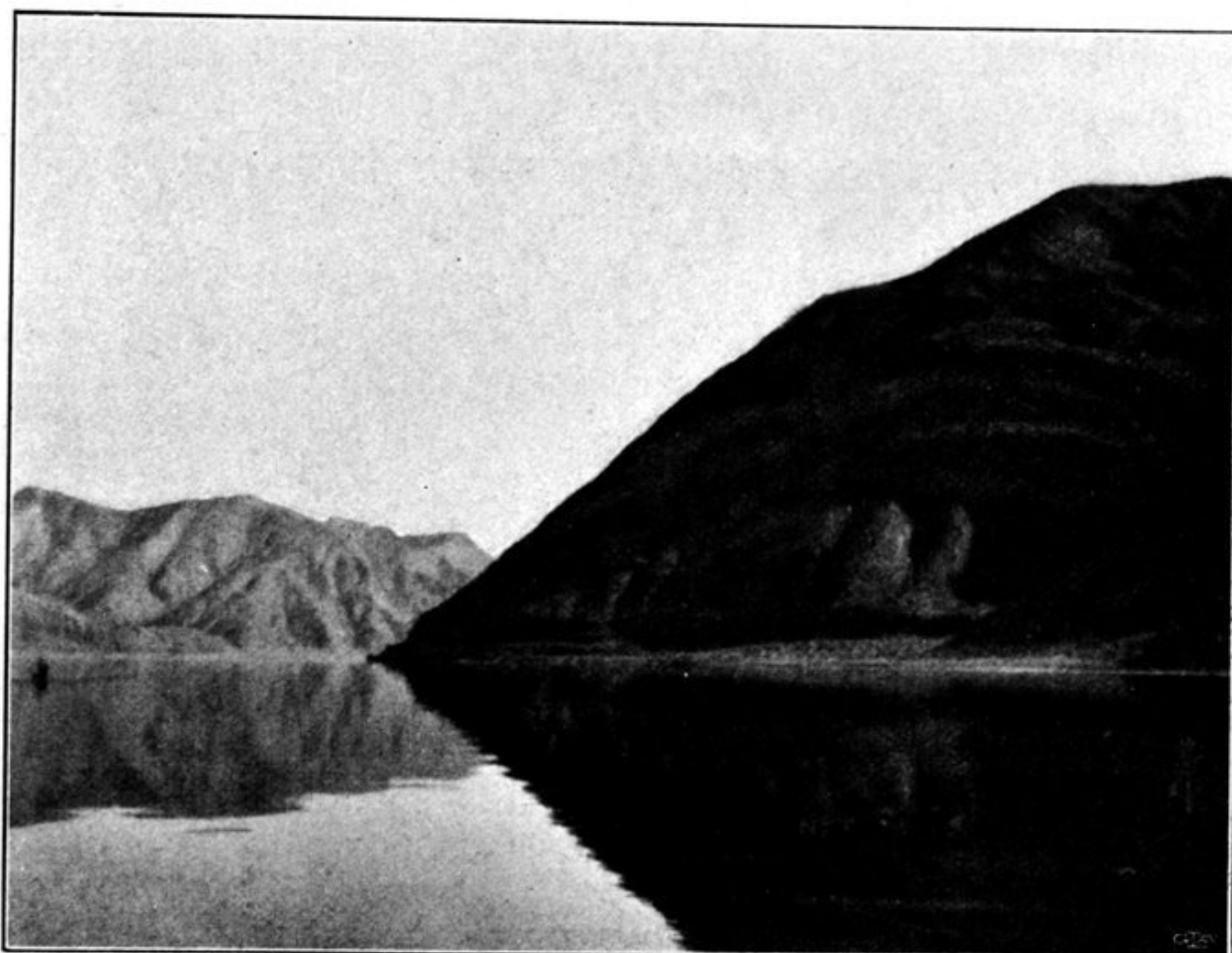


Fig. 194. VIEWS TO THE EAST FROM THE PENINSULA.

and in it a great number of small rodents had burrowed. The peninsula projects so far out into the lake that between its blunted end and the opposite shore the distance is only 515 m. But immediately west of this sound the lake at once broadens out, there being bays on both sides of it. In the sound just mentioned