

Below the difficult rocky promontory, where the water was recently open, the ice was now 3 cm. thick, and would only just bear the weight of a man. Close at the foot of the rock there was however still a narrow ribbon of open water, caused by the springs which break out at the water's edge; but this we could easily avoid,

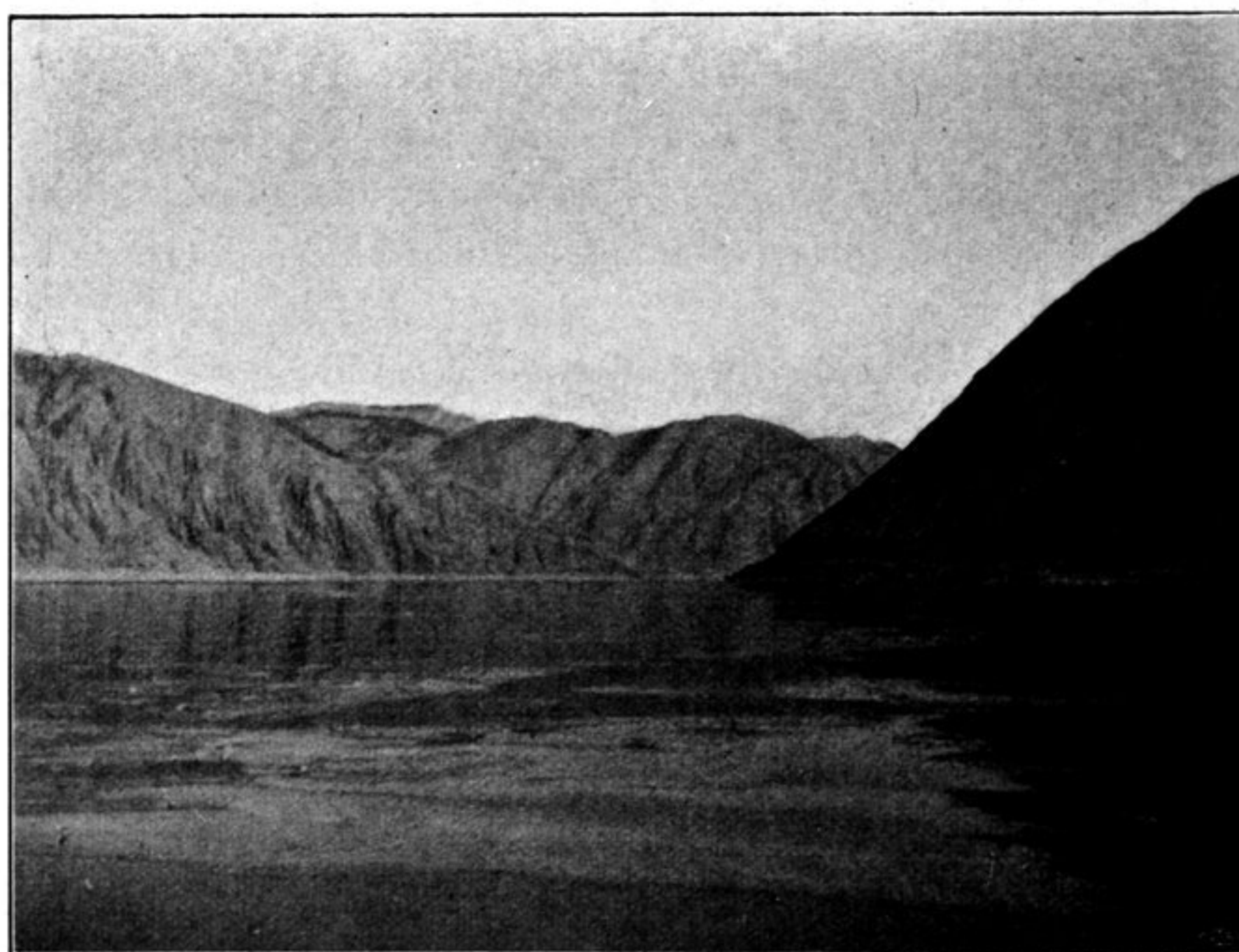


Fig. 198. FROZEN PARTS OF THE TSO-NGOMBO.

for we had only to wait one or two days until the ice grew strong enough to bear the weight of the camels.

The distance to Camp CXLIII, at the foot of the rocky promontory, was only a couple of kilometers. The shore retained the same character as heretofore, being